

**EVALUATION OF GROUNDWATER LEVEL USING COMBINED ELECTRICAL  
RESISTIVITY LOG WITH GAMMA (ELGG) AROUND IKEJA, SOUTHWESTERN  
NIGERIA**

**Abstract**

This study has been able to demarcate the subsurface geologic units based on the lithologic characters. The subsurface geology of Lagos Main land is made up of complex lithologies of an alternating sequence of clay and sand deposits. The borehole lithologic correlation shows that the subsurface geologic sequence is composed of alternations of sand, clay, lenses of clayey sand and sandy clay. All the boreholes correlated were located within the Ikeja, Lagos State. The borehole depths vary from 119 m to 127 m and the sand and clay though variable show lateral continuity across the section. Four major fresh water sand aquifer layers were delineated within the upper 127 m of the subsurface sequence. The first aquifer layers were located at depth ranging from 61 m to 71 m below the ground level and thickness of 10 m with the resistivity varying from 190  $\Omega$ m to 320  $\Omega$ m. The second aquifer layers were located at depth ranging from 79 m to 87 m below the ground level and thickness of 8 m with the resistivity varying from 500  $\Omega$ m to 700  $\Omega$ m. The third aquifer layers were located at depth ranging from 85 m to 92 m below the ground level and thickness of 7 m with the resistivity varying from 300  $\Omega$ m to 590  $\Omega$ m while the fourth aquifer layers were located at depth ranging from 82 m to 89 m below the ground level. It has a thickness of 7 m with the resistivity varying from 300  $\Omega$ m to 610  $\Omega$ m. The aquifers were very heterogeneous as indicated by wide range of aquifer characteristics. Due to the occurrence of the sand formations in the study area, the aquifer level is between the depths of 61 m to 92 m. Hence, if there is a need for industrial purpose the aquifer should be tapped at the depth between 61 m to 89 m, and also screened for water supply. Relatively higher resistivity indicates significant formation fluid.

**Keywords:** Resistivity log, Gamma log, Lithology, Aquifer level

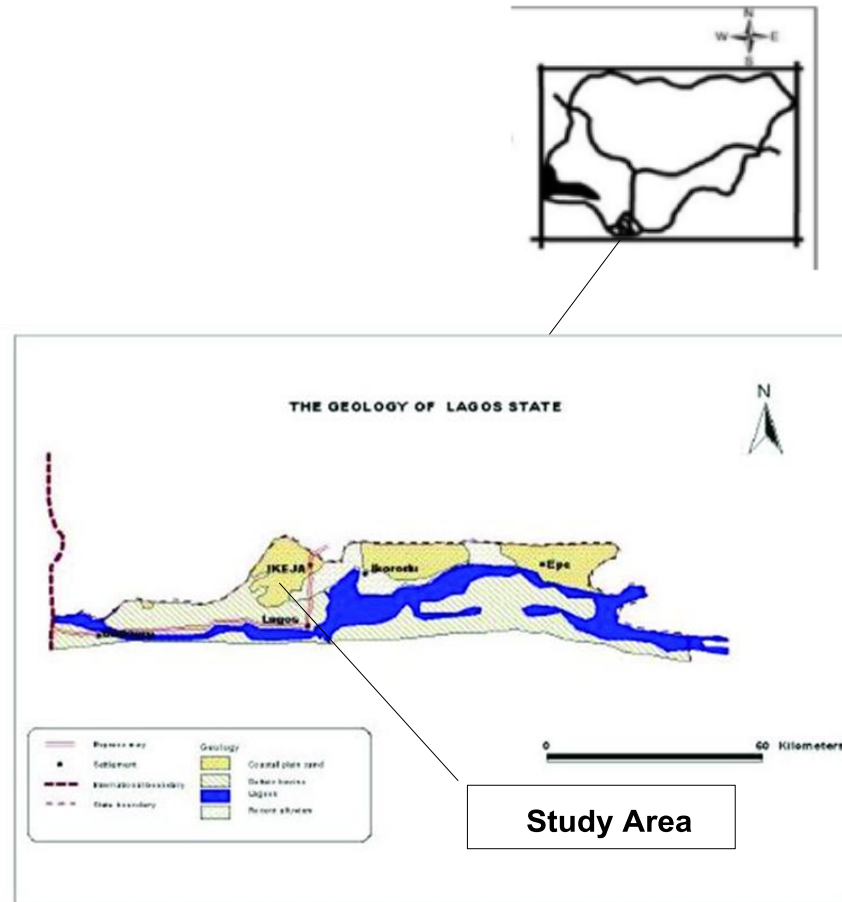
## 29 **Introduction**

30 Water is essential to humans and plays a major role virtually in every aspect of human life. Most  
31 rocks contain numerous open spaces called interstices in which water may be stored and through  
32 which water can move. Subsurface water above the zone of saturation is called vadose water,  
33 while subsurface water in interstices completely saturated with water is called Groundwater [1].  
34 Groundwater is available only when the rocks in the zone of saturation are permeable enough to  
35 transmit sufficient water to wells, springs or streams [2]. Drilling of borehole comprises the  
36 action of breaking, crushing, cutting or dislodging the formation materials, clearing out the  
37 cuttings from the hole and stabilizing the wall of the hole for completion [3]. Geophysical well  
38 logging also called borehole geophysical log, includes all techniques of lowering sensing devices  
39 (Sonde or probe) in a borehole and recording physical parameter that may be interpreted in terms  
40 of the rock, that contained in the rocks and the construction of the well [4, 5, 6]. Geophysical  
41 logs can be interpreted to determine the lithology, geometry, resistivity, formation resistivity  
42 factor, bulk density, porosity, permeability, moisture content and specific water-bearing rocks,  
43 and to define the source, movement, chemical and physical characteristics of water [6, 7, 8].  
44 Geophysical well logging can provide continuous and objective recording values that are  
45 consistent from well to well and from time to time, if the equipment is properly calibrated and  
46 standardized [9]. The most widespread uses of logs in groundwater hydrology are to define the  
47 lithology and geometry of aquifer systems and to estimate the quality of contained water [11].  
48 The resistivity of a material is that property which characterizes its opposition to the electrical  
49 current. The electrical resistivity of a formation is directly related to the nature, quantity, quality,  
50 and distribution of the formation water. In as much as these factors vary appreciably from one  
51 formation to another, resistivity measurements made in a borehole can be used to determine  
52 formation boundaries and to obtain information on the nature of the beds traversed by the drill  
53 [12]. Resistivity logging devices measure the electrical resistivity of a known or assumed volume  
54 of earth materials under the direct application of an electric current or an induced electric current.  
55 The resistivity curve is obtained by lowering either one or several electrodes into the borehole  
56 and making appropriate electrical measurements [13]. These measurements are plotted in terms  
57 of depth and the resulting graph is called a resistivity curve. The gamma ray log (natural gamma  
58 ray log) is one of the radiation logs which involve the measurement of fundamental particles  
59 emitted from unstable radioactive isotopes. It is a measurement of the natural gamma

60 radioactivity of the formations. In sedimentary formations, the gamma ray log normally reflects  
61 the shale (clay) content of the formations. The advantage of radiation logs over most others is  
62 that they may be recorded in either cased or open holes filled with any fluid, because the  
63 radioactive elements tend to concentrate in clays and shale. The main objective of carrying out  
64 borehole logging was to optimize the performance of the borehole in a cost effective way by  
65 appreciably correlating the groundwater aquifer level in Ikeja. In addition, the quality of  
66 contained water will be determined by identifying the fresh water aquifers relative to depth using  
67 combined electrical resistivity log with gamma (ELGG).

### 68 **Site Description and Geology of the Study Area**

69 The study area falls entirely in the Dahomey Basin, Ikeja, Lagos State. The geology of the area is  
70 underlain by sedimentary rocks with no basement outcrop (Figure 1). The Dahomey Basin was  
71 formed following the break-up of the African and South American Plates [14] and is partially  
72 separated from the Niger Delta and the Eastern Nigeria sedimentary basin by a Ridge of  
73 crystalline rocks. The earliest sediments in the area were deposited as a result of the first major  
74 marine transgression in South Western Nigeria [15]. The upper sediments in the Dahomey Basin  
75 are recent. This is underlain by Coastal Plain Sands of the Quaternary Age. Basically the  
76 geologic sequence in the Dahomey Basin extends from Precambrian to Recent. Three distinct  
77 sequences, which are closely related to the geology of the sediments, are identified from past  
78 studies of South-Western Nigeria [16]



79

80 Figure 1. Geological Map of Lagos Showing the Study Area

### 81 Methodology

82 Four composite geophysical well logs were obtained from four borehole locations in Ikeja, Lagos  
 83 state (Figure 2). The composite log consists of the resistivity and gamma ray measurements. The  
 84 GPS coordinates were gotten in UTM units showing the northing, easting and elevation of the  
 85 location above sea level. The cutting were collected at an interval of 3 meters in the well bore,  
 86 washed and bagged. In this study, one lithology detection log (gamma ray log) and one fluid  
 87 detection log (resistivity) were employed in interpreting the subsurface deposition of the wells.  
 88 The subsurface layers (sand and clay) were delineated and correlated stratigraphically.  
 89 Delineation into aquifer horizons was done from well to well by the use of lithologic logs and  
 90 supplemented by geophysical logs. The interpretation of well logs involves choosing best models  
 91 from the given data so as to obtain results which are geologically plausible. Well log  
 92 interpretations are often quantitative and qualitative, but only the qualitative technique was

93 employed for facies analysis. The qualitative interpretation involved the use of models which  
94 represent the characteristic log response to the formation parameters. The qualitative  
95 interpretations involve **identification** of sand units from chosen top sand to the last water bearing  
96 sand using gamma ray log, **classification** of the sand that contain aquifer of relevant geological  
97 formation that juxtaposed it, **identification** of water-bearing sand from resistivity log and  
98 **identification** of fresh water sand. A baseline is drawn on the gamma log, which is midway  
99 between the maximum and minimum gamma signals. All signals to the left of the baseline were  
100 regarded as sand while all signals to the right of the baseline are taken as clay. Based on the  
101 available data on the ditch cuttings, **lithology** was prepared. The motive of the resistivity log was  
102 used to determine the sandy formation. Formation fluid of high resistivity indicates sand while  
103 low resistivity indicates clay. A deflection of the resistivity curve to the right indicates sand  
104 (fresh water). On the other hand, a deflection towards the resistivity curve to the left indicates  
105 clay. Resistivity of rock units and fluid are measured directly on the geophysical log [17].  
106 Intervals of logs from different wells were matched for similarity or for characteristic log  
107 responses to lithological markers. The borehole lithologic logs of the study area were correlated  
108 along one direction. The subsurface layers were correlated and delineated stratigraphically along  
109 the aforementioned directions and aquifer levels were delineated.

110



111

112 Figure 2. Satellite imagery of the study area showing the point of Borehole logs

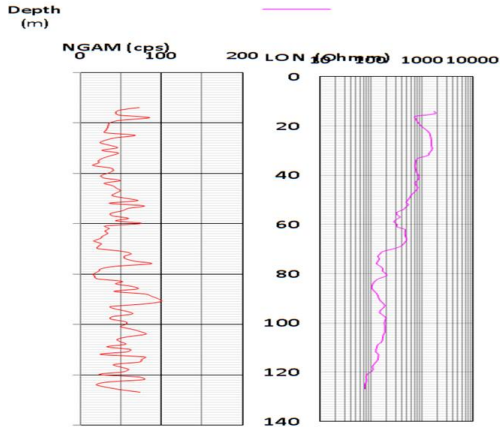
113 **Results and Discussion**

114 The data obtained from four representative wells of the study area were presented in a digitized  
115 form. Figure 3 displays the digitized logs borehole one (1) to four (4) with well drilled to the  
116 depth of 132 meters. The lithology of the borehole consists entirely of alternating layers of sand,  
117 clay, sandy clay and clayey sand. The sand layers are significantly thick, uniform and continuous  
118 with intercalations of clayey sand, sandy clay and clay layers. The lithology of the borehole was  
119 deduced from the Natural Gamma Log which goes along with the resistivity log

120 **Geophysical Correlation of boreholes**

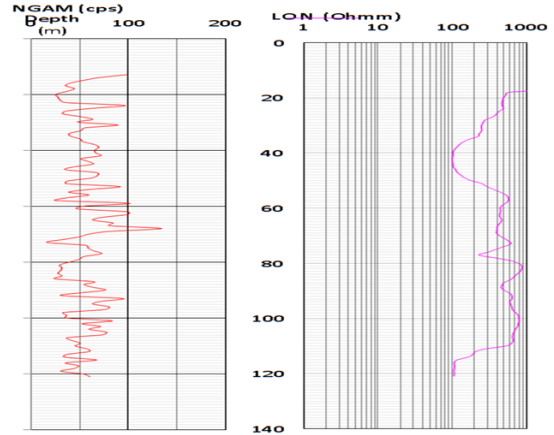
121 Each of the boreholes is discussed based on their lithology and formation resistivity from the  
122 available logs (Figure 4 to 7). Generally the lithology of the boreholes formations consist of  
123 cyclothem of sand, clay, clayey sand and sandy clay. Sometimes, the sand occurs as lenses  
124 within the clay formation. Interpretation of gamma ray and resistivity logs of water wells in the  
125 study area also reveal the existence of aquifer bearing sand. Identification of the major aquifers  
126 for each of the wells of the study has been made. All the wells were made up of multilayer  
127 aquifer systems but were reduced to major ones. Lithology is derived from the gamma ray log  
128 and the corresponding saturating fluid is gotten from the resistivity log. Lithology of the  
129 formations is tabulated in respect to depth and corresponding formation description (Tables 1 to  
130 4). Table 5 illustrates the summary of water bearing sands depth in the study area with Bh1  
131 varies from 26 to 50 m, 55 to 57 m, 61 to 71 m and 77 to 83 m while Bh2 ranges from 15 to 23  
132 m, 25.5 to 28 m, 33 to 36 m, 71 to 74 m, 79 to 87 m and 97 to 100m. Bh3 varies from 22 to 25  
133 m, 64 to 68 m, 85 to 92 m, 98 to 102 m and 107 to 112 m while Bh4 ranges from 23 to 27 m, 30  
134 to 34 m, 56 to 60.5 m, 71 to 74 m and 82 to 89 m.

LOCATION: Ikeja	STATE: LAGOS
COORDINATE: N 06 36.757 E 003 20.065	ELEVATION : 74m
FLUID IN HOLE: Bentonite	BIT FROM : TO 14'' 0m 132m



BH1

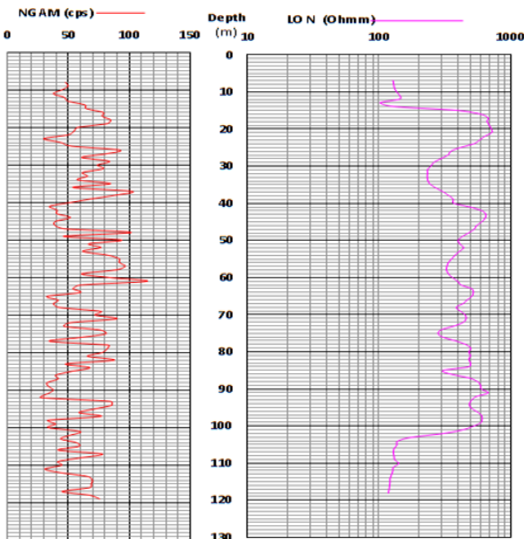
LOCATION: Ikeja	STATE: LAGOS
COORDINATE: N 06 36.844 E 003 20.232	ELEVATION : 45m
FLUID IN HOLE: Bentonite	BIT FROM : TO 15'' 0m 121m



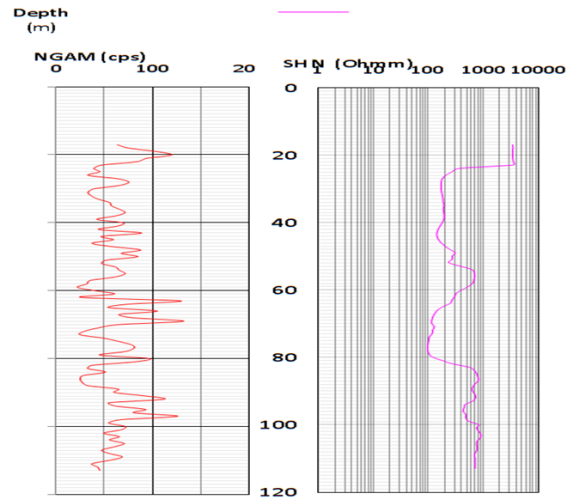
BH2

COMPANY: Aquaflo Universal Serv. Ltd.	LOCATION: IKEJA	STATE: LAGOS
Well: Bl. 1 Cabdurq, Ikeja	COORDINATE:	ELEVATION :
LOG: ELGG	FLUID IN HOLE: Bentonite	BIT FROM : TO 15'' 0m 119m
DRILLER: I19m		
LOGGER: I19m		
JOB BY: Mathias		
DESIGNED BY: SEGUN		
REVISIONS:		

LOCATION: Ikeja	STATE: LAGOS
COORDINATE: N 06 36.614 E 003 19.914	ELEVATION : 64m
FLUID IN HOLE: Bentonite	BIT FROM : TO 15'' 0m 114m



BH3



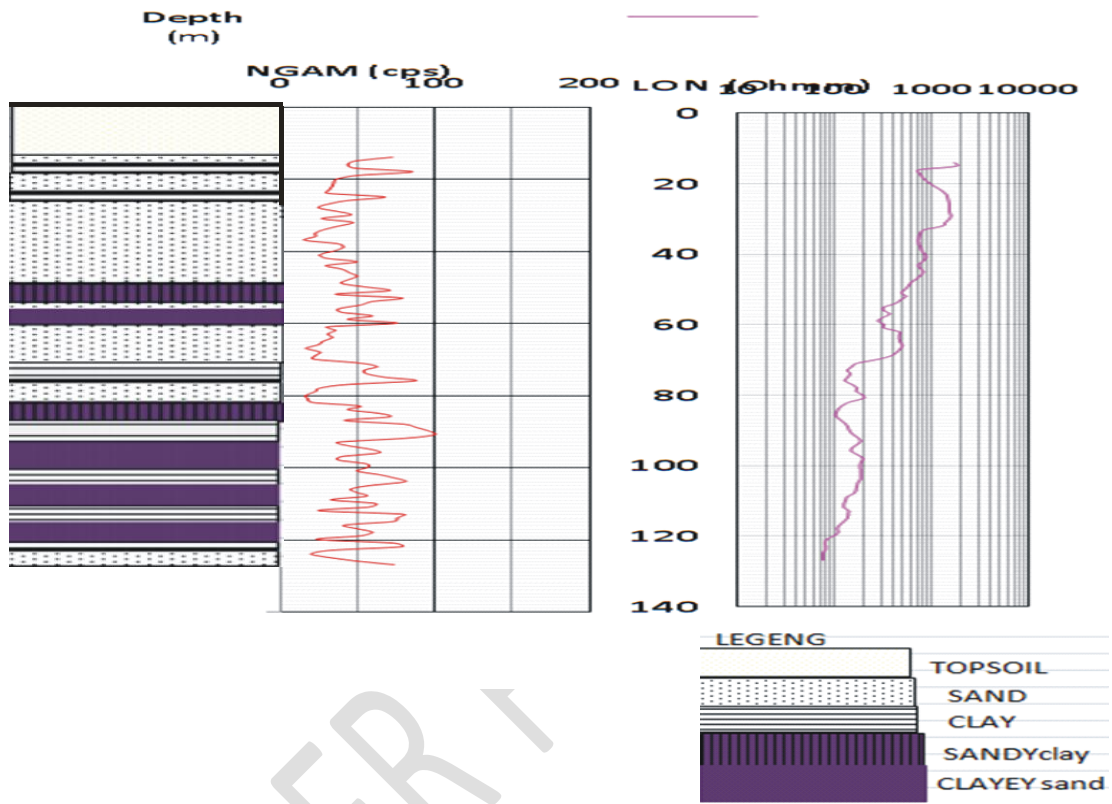
BH4

135

136 Figure 3. Digitized Logs of Borehole 1 to 4 of the Study Area

137

<b>LOCATION:</b> Ikeja	<b>STATE:</b> LAGOS
<b>COORDINATE:</b> N 06 36.757	<b>ELEVATION :</b> 74m
E 003 20.065	
<b>LOG IN HOLE:</b> Bentonite	<b>BIT FROM :</b> TO
	14'' 0m 132m



138

139

140 Figure 4 Geophysical Correlation of borehole 1

141

142

143

144

145



146 Table 1. The lithology of Borehole 1 in respect to depth and corresponding formation  
 147 description.

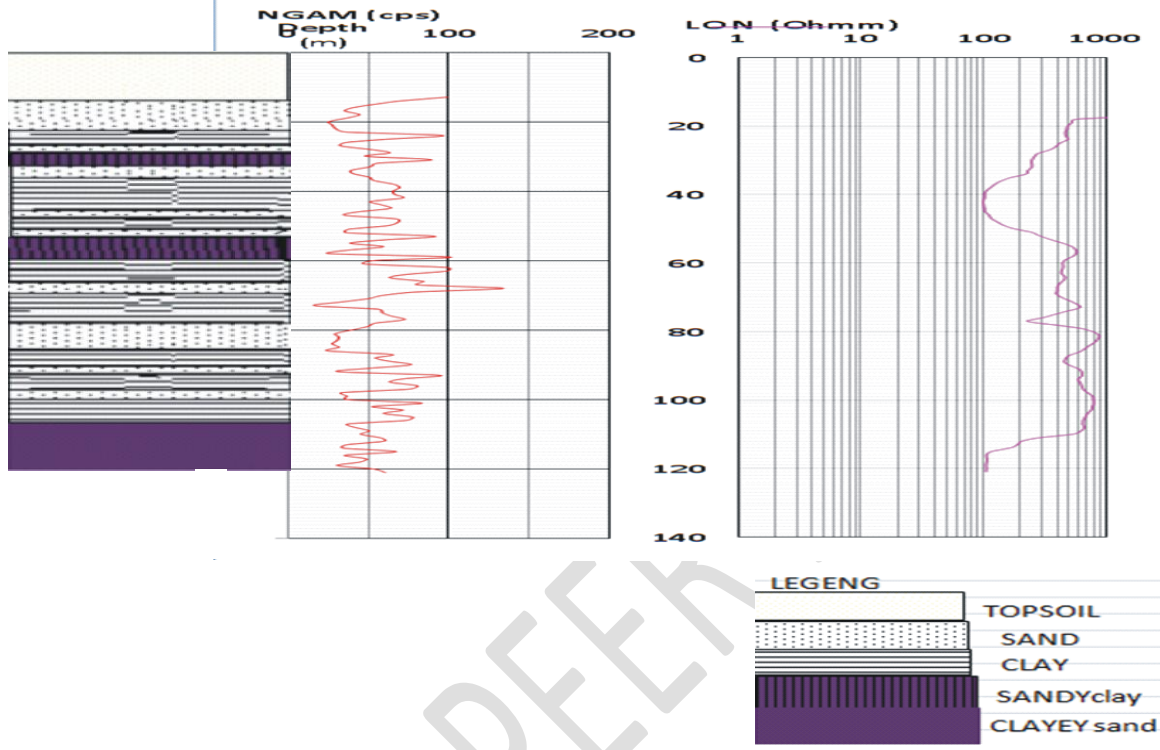
Depth(m)		Lithologic description
From	To	
15	17	Sand
17	19	Clay
19	25	Sand
25	26	Clay
26	50	Sand
50	55	Clay, sandy
55	57	Sand
57	61	Sand, clayey
61	71	Sand/medium
71	77	Clay
77	83	Sand
83	87	Clay, sandy
87	93	Clay
93	101	Sand, clayey
101	105	Clay
105	112	Sand, clayey
112	116	.Clay
116	121	Sand, clayey
121	122.5	Clay
122.5	126	Sand

148

149

150

LOCATION: Ikeja	STATE: LAGOS
COORDINATE: N 06 36.844	ELEVATION : 45m
E 003 20.232	
CONTAMINANT IN HOLE: Bentonite	BIT FROM : TO
	15" 0m 121m



151

152 Figure 5. Geophysical correlation of borehole 2

153

154

155

156

157

158

159

160

161

Table 2. The lithology of Bh2 in respect to depth and corresponding formation description.

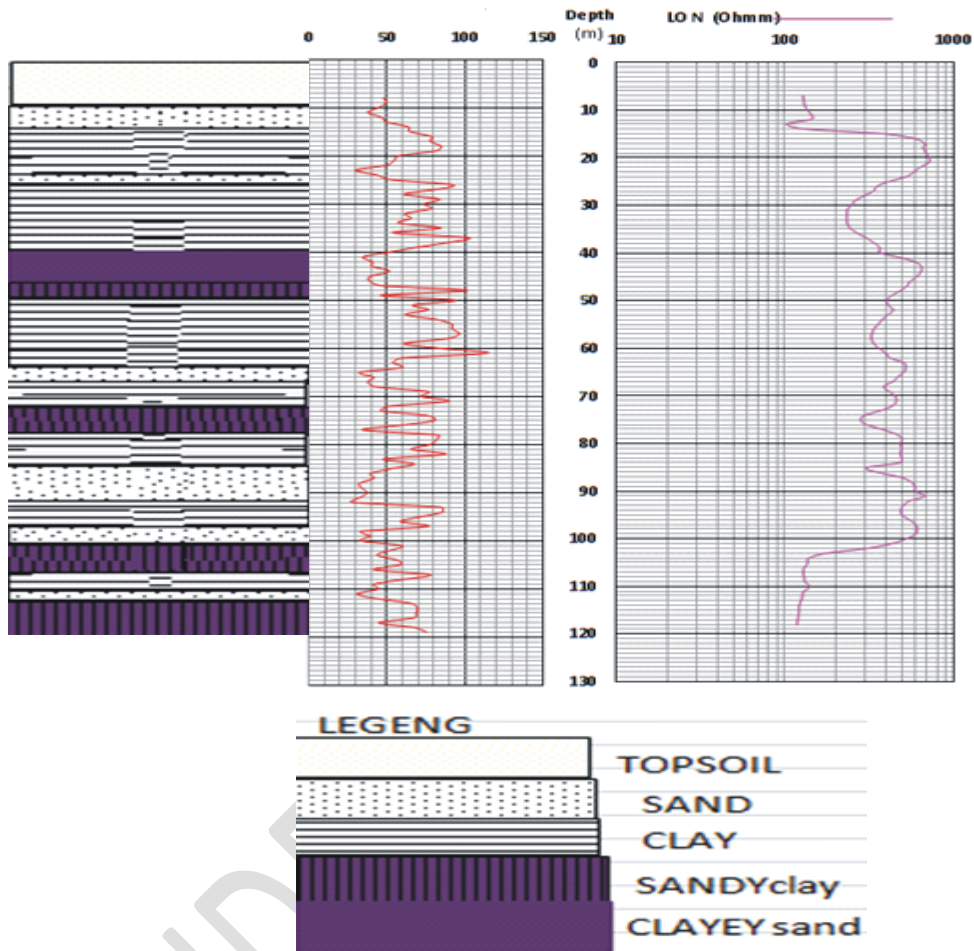
Depth (m)		Lithologic description
From	To	
13	15	Clay
15	23	Sand
23	25.5	Clay
25.5	28	Sand
28	33	Clay sandy
33	36	Sand
36	46	Clay
46	47.5	Sand
47.5	51	Clay
51	52	Sand
52	61	Clay Sandy
61	71	Clay
71	74	Sand
74	79	Clay
79	87	Sand
87	91	Clay
91	92	Sand
92	97.5	Clay
97.5	100	Sand
100	107	Clay
107	121	Sand clayey

162

163

164

<b>LOCATION:</b> IKEJA	<b>STATE:</b> LAGOS
<b>COORDINATE:</b>	<b>ELEVATION :</b>
<b>FLUID IN HOLE:</b> Bentonite	<b>BIT FROM : TO</b> 15" 0m 119m



165

166 Figure 6. Geophysical Correlation of borehole3

167

168

169

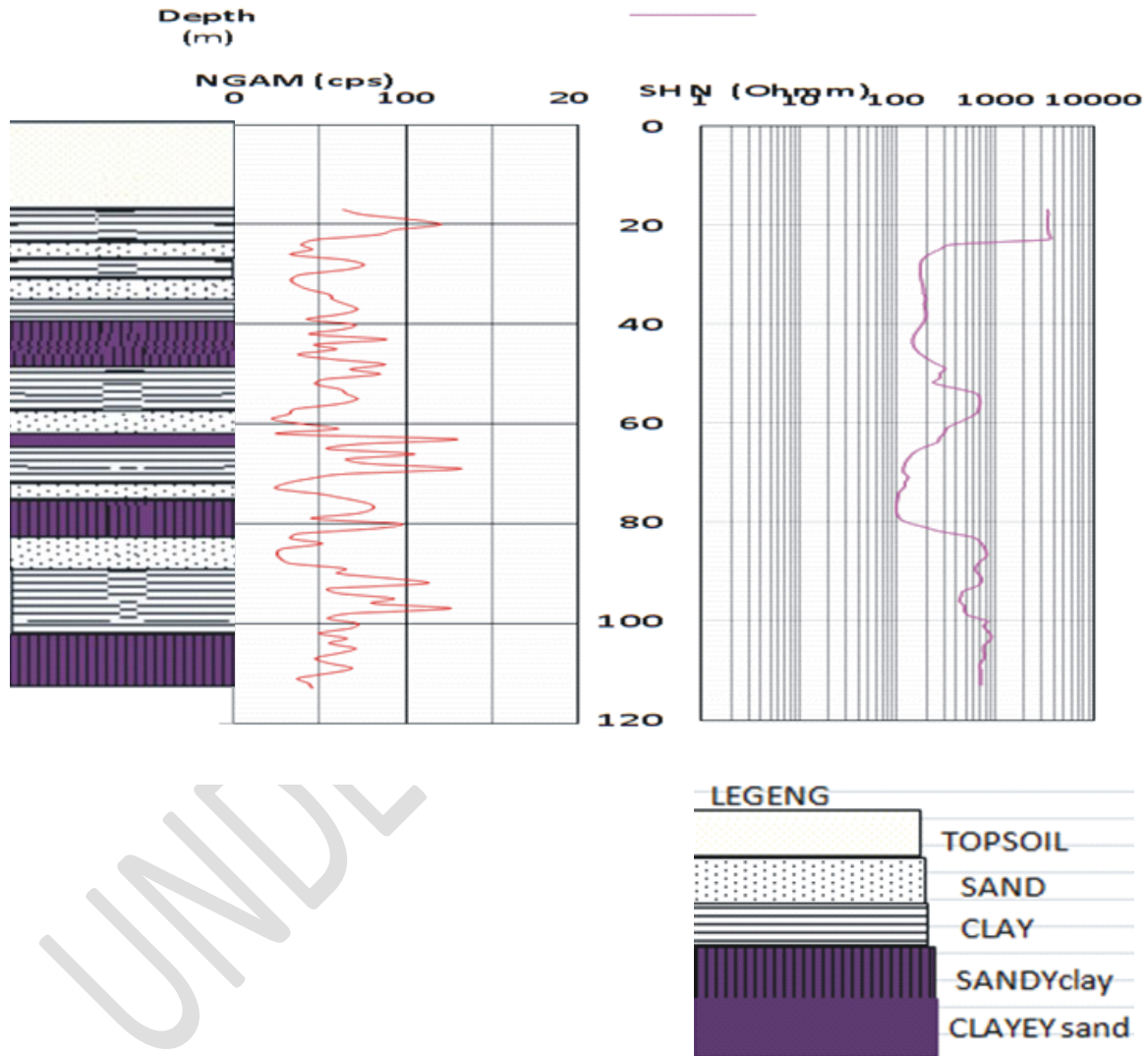
170

171

Table 3. The lithology of Bh3 in respect to depth and corresponding formation description.

Depth (m)		Lithologic description
From	To	
8	12	Sand
12	22	Clay
22	25	Sand
25	40	Clay
40	47	Sand, clayey
47	49	Clay, sandy
49	64	Clay
64	68	Sand
68	72	Clay
72	78	Clay, sandy
78	85	Clay
85	92	Sand
92	98	Clay
98	101	Sand
101	106	Clay, sandy
106	109	Clay
109	112	Sand
112	119	Clay, sandy

<b>LOCATION:</b> Ikeja	<b>STATE:</b> LAGOS
<b>COORDINATE:</b> N 06 36.614 E 003 19.914	<b>ELEVATION :</b> 64m
<b>LOG IN HOLE:</b> Bentonite	<b>BIT FROM : TO</b> 15'' 0m 114m



174

175 Figure 7. Geophysical correlation of borehole4

176

177

178 **Table 4. The lithology of Bh4 in respect to depth and corresponding formation description.**

Depth(m)		Lithologic description
From	To	
17	23	Clay
23	27	Sand
27	30	Clay
30	34	Sand
34	38	Clay
38	47	Clay, sandy
47	56	Clay
56	60.5	Sand
60.5	62	Sand/medium, clayey
62	71	Clay
71	74	Sand
74	82	Clay, sandy
82	89	Sand
89	102	Clay
102	113	Clay, sandy

179

180 **Table 5. Summary of the water bearing sands depth in the study area.**

WATER BEARING SANDS							
S/N	LOCATION/AREA	WATER BEARING SANDS DEPTH (m)					
1	Bh1	26-50	55-57	61-71	77-83		
2	Bh2	15-23	25.5-28	33-36	71-74	79-87	97-100
3	Bh3	22-25	64-68	85-92	98-102	107-112	
4	Bh4	23-27	30-34	56-60.5	71-74	82-89	

181

182 **Correlation of Lithological Logs**

183 Lithostratigraphic sections and resistivity correlations are relevant in aquifer development  
184 because they give us an insight into the general subsurface stratification and fluid characteristics.  
185 Table 6 shows the lithostratigraphic and resistivity correlations of the main land region studied in  
186 the aforementioned directions. Figure 8 illustrates the correlation of lithological logs showing the  
187 fresh water bearing sand of each well in the study area. All the boreholes correlated are located  
188 within the coastal plain sands. The borehole depths vary from 119m to 127m. The stratigraphic  
189 section is composed of alternations of sands and clays. The sands and clays, though variable,  
190 show lateral continuity across the section. Table 7 show the four major fresh water sand aquifer  
191 layers that were delineated within the upper 127m of the subsurface sequence. The first aquifer  
192 layers were located at depth ranging from 61m to 71m below the ground level. It has a thickness  
193 of 10m with the resistivity varying from 190 $\Omega$ m to 320 $\Omega$ m. The second aquifer layers were  
194 located at depth ranging from 79m to 87m below the ground level. It has a thickness of 8m with  
195 the resistivity varying from 500 $\Omega$ m to 700 $\Omega$ m. The third aquifer layers were located at depth  
196 ranging from 85m to 92m below the ground level. It has a thickness of 7m with the resistivity  
197 varying from 300 $\Omega$ m to 590 $\Omega$ m while the fourth aquifer layers were located at depth ranging  
198 from 82m to 89m below the ground level. It has a thickness of 7m with the resistivity varying  
199 from 300 $\Omega$ m to 610 $\Omega$ m

200

201

202

203

204

205

206

207

208 **Table 6. showing fresh water saturated and their resistivity values**



S/N	AQUIFERS	DEPTH [M]	THICKNESS [M]	RESISTIVITY [ $\Omega$ M]
BOREHOLE1	A	26-50	24	500-1700
	B	55-57	2	320-380
	C	61-71	10	190-320
	D	73-83	10	130-150
BOREHOLE2	A	15-23	8	500-1000
	B	25.5-28	2.5	280-450
	C	33-36	3	180-220
	D	71-74	3	400-600
	E	79-87	8	500-700
	F	97-100	3	790-800
BOREHOLE3	A	22-25	3	410-600
	B	64-68	4	390-500
	C	85-92	7	300-590
	D	98-102	4	300-600
	E	107-112		130-600
BOREHOLE4	A	23-27	4	190-1100
	B	30-34	4	180-190
	C	56-60.5	4.5	400-700
	D	71-74	3	110-140
	E	82-89	7	300-610

209

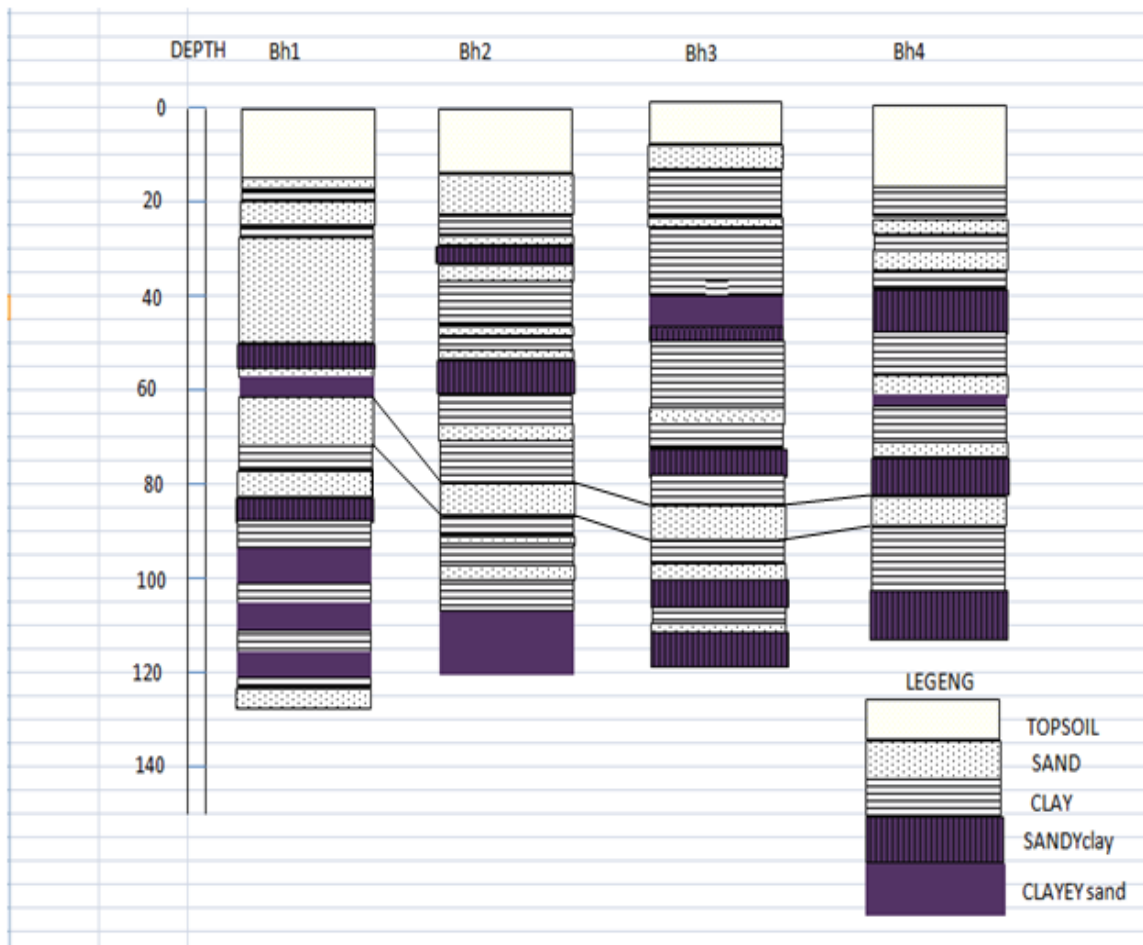
210

211

212

213

UNDER PL



214

215 Figure 8. lithological log correlation of the aquifer

216

217

218

219

220

221

222

223

Table 7 Show the major depth of aquifers in the four boreholes

S/N	AQUIFERS	DEPTH [M]	THICKNESS [M]	RESISTIVITY [ $\Omega$ M]
BOREHOLE1	C	61-71	10	190-320
BOREHOLE2	E	79-87	8	500-700
BOREHOLE3	D	85-92	7	300-590
BOREHOLE4	E	82-89	7	300-610

225

226 **CONCLUSION**

227 The subsurface geologic units have been demarcated in this study based on the lithologic  
 228 characters. The borehole lithologic correlation shows that the subsurface geologic sequence is  
 229 composed of alternations of sands and clays. Lenses of clayey sand, sandy clay and silty clay  
 230 occur in places. The geophysical log and Lithology log were correlated from the Bh1, Bh2, Bh3  
 231 and Bh4. All the boreholes correlated were located within the coastal plain sands. The borehole  
 232 depths vary from 119m to 127m. The stratigraphic section is composed of alternations of sands  
 233 and clays. Four major fresh water sand aquifer layers that were delineated within the upper 127m  
 234 of the subsurface sequence. The first aquifer layers were located at depth ranging from 61m to  
 235 71m below the ground level. It has a thickness of 10m with the resistivity varying from 190 $\Omega$ m  
 236 to 320 $\Omega$ m. The second aquifer layers were located at depth ranging from 79m to 87m below the  
 237 ground level. It has a thickness of 8m with the resistivity varying from 500 $\Omega$ m to 700 $\Omega$ m. The  
 238 third aquifer layers were located at depth ranging from 85m to 92m below the ground level. It

239 has a thickness of 7m with the resistivity varying from 300Ωm to 590Ωm while the fourth  
240 aquifer layers were located at depth ranging from 82m to 89m below the ground level. It has a  
241 thickness of 7m with the resistivity varying from 300Ωm to 610Ωm. The subsurface geology of  
242 Lagos Main land is made up of complex lithologies of an alternating sequence of clay and sand  
243 deposits. The data available allows for delineation of subsurface into four aquifer horizons. Sand  
244 and gravel constitute the materials in the aquifer of recent sediments and Coastal Plain Sands.  
245 Four major fresh water bearing sand aquifers layers suggests that the deposits could be of fluvial  
246 usually estuarine deposits. The aquifers are very heterogeneous, as indicated by wide range of  
247 aquifer characteristics. In light of this information, it is recommended that due to the occurrence  
248 of the coastal plain sand in the study area the aquifer level is between the depths of 61m to 92m.  
249 Hence, if there is a need for industrial purpose, the aquifer should be tapped at the depth between  
250 61m to 89m, and also screened for water supply. Relatively higher resistivity indicates  
251 significant formation fluid.

## 252 REFERENCES

- 253 [1] Ilugbo SO, Adebo BA, Olomo KO, Adebisi AD. Application of Gis and multi criteria  
254 decision analysis to geoelectric parameters for modeling of groundwater potential around  
255 Ilesha, Southwestern Nigeria. *European Journal of Academic Essays*. 2018;5(5):105-123.
- 256 [2] Ilugbo SO, Adebisi AD. Intersection of Lineaments for groundwater prospect analysis using  
257 satellite remotely sensed and aeromagnetic dataset around Ibodi, Southwestern Nigeria.  
258 *Int. J. of Phys Sci*. 2017;12(23):329-353.
- 259 [3] Gass TE. A comparison of Earth resistivity and electromagnetic survey methods, *Water Well*  
260 *Journa* 1987;1 (August) 43-47.
- 261 [4] Guyod H. Electrical detective; investigation of groundwater supplies with electric logs,  
262 *Water Well Journal*, 1957; March/May, 8p.
- 263 [5] Keller GV, Frischknecht FC. Electrical methods in geophysical prospecting, *New York*  
264 *Pergamon Press*, 1966: 519p.
- 265 [6] Keith B. The use of geophysical well logging as an aid to well construction and  
266 rehabilitation, *Robertson Geologging Limited, UK*. 1998.

- 267 [7] Keys WS, MacCary LM. Application of borehole geophysics to water resources  
268 investigation of the USGS. 1971, Chapter 2, Book 5, 126p.
- 269 [8] Oteri AU. Interpretation of electric logs in aquifer of Dahomey Basin Nigeria, African  
270 *Journal of Science and Technology*, 1986a, series B vol.2, 54-61p.
- 271 [9] Oteri AU. Electric log interpretation for the evaluation of salt water in the eastern Niger  
272 Delta. *Hydrological Sciences Journal* 1988b: 33 (1/2), 19-30.
- 273 [10] Peart RJ. Surface geophysical techniques applied to groundwater exploration in  
274 Hydrogeology, *Commonwealth Africa*, 1975: vol. 11: Technical papers, 45-102.
- 275 [11] Schlumberger Well Log Corporation, Schlumberger log interpretation, 1972: vol. 1,  
276 principles 110pp.
- 277 [12] Zohdy AAR, Eaton GP, Mabey DR. Application of surface geophysics to geophysics to  
278 groundwater investigation. *Techniques of water resources investigation of the USGS*,  
279 1974, Chapter D1, 5-62.
- 280 [13] Ilugbo SO, Ozegin KO. Significances of Deep Seated Lineament in Groundwater Studies  
281 around Ilesha, Southwestern Nigeria. *Asian Journal of Geological Research*, 2018, 1(1)  
282 1-16,
- 283 [14] Burke K, Dessauvage TFJ, Whiteman AJ. Opening of the Gulf of Guinea and geological  
284 history of the Benue depression and Niger delta. *Nature Phys. Sci.* 1971, 233, p. 51-55.
- 285 [15] Kogbe CA. The Upper Cretaceous Abeokuta Formation of south-western Nigeria.  
286 Nigerian field 1974, Vol. 4, No 4.
- 287 [16] Kampsax K, Sshwed A. Hydrogeology of Lagos Metropolis. A report submitted to the  
288 Lagos State Ministry of Works and Planning 1977.
- 289 [17] Oteri AU. Interpretation of electric logs in aquifer of Dahomey Basin Nigeria, African  
290 *Journal of Science and Technology*, 1986a, series B vol.2, 54-61p.