

Original Research Article

Evaluate the Efficacy of Some Chemical Insecticides and Biopesticides Against Flea Beetle in Cabbage

Comment [A1]: Delete the some chemical

ABSTRACT

Aims: This study aimed to evaluate some chemical insecticides and bio-pesticides against flea beetle in cabbage.

Study Design: The experiment was laid out at a randomized complete block design with three replications.

Place and Duration of Study: Experimental farm of Sher-e-Bangla Agricultural University, Bangladesh during the period from October 2017 to March 2018.

Methodology: The experiment consisted of nine treatments viz. T₁ (Sevin 85 WP @ 2g/L of water), T₂ (Decis 2.5 EC @ 1.0 ml/L of water), T₃ (Voliam flexi @ 0.5 ml/L of water), T₄ (Ripcord 10 EC @ 1.0 ml/L of water), T₅ (Dursban 20EC @ 1 ml L⁻¹ of water), T₆ (Tobacco leaf extract @ 3 g L⁻¹ of water), T₇ (Neem seed kernel extract @ 3 g L⁻¹ of water), T₈ (Bioneem plus 1 EC @ 1 ml L⁻¹ of water) and T₉ (Untreated Control) were used at 7 days interval.

Results: Stripped flea beetle (*Phyllotreta striolata*) and white-spotted flea beetle (*Monolepta signata*), these two species of flea beetle were found in the experimental field. Among all the treatments T₄ (Ripcord 10EC) performed the best in managing flea beetles based on the lowest percentage of leaf infestation (5.84%), lowest no. of holes per plant (6.13), lowest percentage of head infestation by number (18.04) and highest percentage of infestation reduction over control on all parameters at vegetative stage of plant. Again, the lowest leaf infestation intensity (5.73%), lowest number of holes per infested head (14.00), lowest percentage of infestation of head by number (6.69) were achieved at harvesting stage from the same treatment (T₄) whereas the highest values of all these parameters were achieved from untreated control treatment (T₉). T₄ treatment provided the best performance in yield where yield was increased (112.51 %) over control, giving maximum yield 75.76 tons ha⁻¹. Bioneem plus 1 EC (T₈) performed the best among the biopesticides while the neem seed kernel extract showed less effectivity against flea beetle.

Conclusion: It is concluded that in case of of chemical insecticides Ripcord 10EC while in case of biopesticides Bioneem plus 1 EC would be effective for flea beetle management.

Comment [A2]: Delete some chemical

Keywords: Flea beetle; *Monolepta signata*; *Phyllotreta striolata*; *voliam flexi*; *Bioneem plus*; tobacco leaf extract.

1. INTRODUCTION

For cabbage production, there are many limiting factor i.e. unavailability of quality seeds of high yielding varieties, delayed sowing after the harvesting of transplanted aman rice, fertilizer management, improper and limited irrigation facilities and infestation of different insect pests. Insects play an important role in decreased production of cabbage in Bangladesh. Cabbage caterpillar, Flea beetle, Cabbage aphid, Semi looper, Diamond back moth, Cutworm, Whitefly, Cabbage worm etc are the most common insect infesting cabbage [1][2].

Flea beetles are included in the most important pest of cruciferous plants [3]. It is common name of an insect of Chrysomelidae family and belongs to the Coleopteran. Pale striped Flea beetle, Elongate Flea beetle, Hop Flea beetle, Red headed Flea beetle, Three spotted Flea beetle, Western black Flea

beetle, Toothed Flea beetle etc are the various genus and species of Flea beetle. Beetles can cause substantial damage on host plants by feeding on the leaves, especially in early stages of development [4]. They occasionally damage vegetables, flowers, and even trees. Adult's flea beetle, which produce most plant injuries are typically small often shiny, and have larger rear legs that allow them to jump like a flea when disturbed. ~~And also produce characteristics injury known as 'shot holing'.~~ When occurring in large numbers can rapidly defoliate and kill plants. The pest if left unabated and in severe infestation can result in total crop failure while moderate infestation leads to at least 25 % foliage damage characterized by "shot holes" on the foliage. The importance of flea beetles as pests is aggravated by the fact that several species also vector plant pathogens [5]. Some species are vectors of serious diseases such as potato blight and bacterial wilt of corn.

Comment [A3]: Delete fullstop

Comment [A4]: and

Among the various control practices in cabbage to suppress the prevalence of flea beetle insecticides are the mostly used. Foliar applied insecticides are effective when beetle populations have reached an economic threshold level and treatments are timed properly. There are many insecticides labeled for treating flea beetles. For conventional growers, pesticides containing pyrethroids or carbamates (Sevin) are generally effective [6]. However, there are many challenges in case of pest management from economic and ecological point of view due to human and environmental hazards and most of them are caused by synthetic chemical pesticides [7]. Now a days, biopesticides is being used an alternative of chemical insecticides. Rotenone was often used in the past, but it is not ideal because it is has a relatively high mammalian toxicity and its availability has become limited. Neem-based insecticides are known for their pesticidal activity against more than 400 species of insects [8]. However, they are not toxic to humans and many beneficial arthropods, and targeted pests are unlikely to develop resistance; therefore, these insecticides have been advocated to replace synthetic insecticides as they are more sensible to be used in most pest management programs [9]. Therefore an attempt was taken to evaluate the efficacy of some commonly used chemical insecticides and biopesticides against flea beetle in cabbage.

2. MATERIALS AND METHODS

2.1 Experimental site

The location of the present experimental field was at the central farm of Sher-e-Bangla Agricultural University, Sher-e-Bangla Nagar, Dhaka, ~~Bangladesh~~ during the period of October 2017 to March 2018. The soil of the experimental plot was shallow red-brown terrace soil and little less than neutral (pH 5.8-6.5) in nature.

Comment [A5]: The experiment was laid during the

2.2 Experimental treatment and design

The test crop used in the experiment was cabbage variety Atlas-70. It is an imported high yielding variety with average yield 55-60 t/ha⁻¹. Nine treatments, viz. T₁ (Sevin 85WP @ 2 g L⁻¹ of water at 7 days interval), T₂ (Decis 2.5 EC @ 1 ml L⁻¹ of water at 7 days interval), T₃ (Voliam flexi @ 0.5 ml L⁻¹ of water at 7 days interval), T₄ (Ripcord 10EC @ 1 ml L⁻¹ of water at 7 days interval), T₅ (Dursban 20EC @ 1 ml L⁻¹ of water at 7 days interval), T₆ (Tobacco leaf extract @ 3 g L⁻¹ of water at 7 days interval), T₇ (Neem seed kernel extract @ 3 g L⁻¹ of water at 7 days interval), T₈ (Bioneem plus 1 EC @ 1 ml L⁻¹ of water at 7 days interval) and T₉ (Untreated Control) were used at seven days interval. We laid out the experiment in a Randomized Complete Block Design (RCBD) with three replications. The area of a single plot of the experiment was 4 m² (2.5 m x 1.6 m).

2.3 Crop husbandry

The seeds were collected from the local market and were sown on the seedbed on October 15, 2017. Before seed sowing, the seedbed was prepared well and made suitable for seedling production. Before seedling transplantation, the land was prepared well by deep ploughing followed by laddering. 28 days old seedlings were transplanted in the main field on 15 November, 2017 at the rate of 16 seedlings plot⁻¹. Application of manures and fertilizers was done according to the recommended fertilizer doses for cabbage production per hectare by [10]. Intercultural operations such as gap filling, weeding, earthing up, irrigation, etc. were done as and when required for ensuring and maintaining the normal growth of crops.

2.4 Data collection

Five plants were randomly selected from each unit plot for the recording of necessary data on different crop attributes. Data collection was started at the vegetative stage at 15 DAT to cabbage head harvest. The data on crop characters like the number of infested leaves, no. of holes, no. of healthy and infested head, the weight of individual head; height and diameter of cabbage heads; yield

Treatments	% Leaf infestation	Mean	% Reduction
------------	--------------------	------	-------------

(t ha⁻¹) were recorded. Only the fully compact and marketable heads were harvested at the time of harvesting.

2.5 Statistical package

Collected data were analyzed following ANOVA techniques by using MSTAT computer package program. Mean values were ranked and compared by Duncan's Multiple Range Test (DMRT) at 5% level of significance [11].

3. RESULTS AND DISCUSSION

3.1 Percent leaf infestation by number at different days after transplanting

The significant variations were observed among the different treatments used for the management in terms of percent leaf infestation by number due to attack of flea beetle at different days after transplanting (DAT). In terms of mean infestation of leaf by number, the highest was found in T₉ (37.41%) comprised of untreated control which was significantly different from all other treatments. On the other hands the lowest mean leaf infestation by number was found in T₄ (5.837%) which was followed by T₃ (11.78%) and significantly different from all other treatments (Table 1).

In case of percent reduction over control, the highest reduction over control was achieved by T₄ (84.42%) where the lowest was found in T₇ (54.56%). However the rate of incidence of flea beetles infested leaves was decreased with the age of the cabbage plants and no flea beetles infested leaves was observed at 45 DAT, because the leaves that were infested at early stage of the plant growth were dropped off at the later stage. The same trend was found by Islam [12]. As the temperature increased after 45 DAT, the number of flea beetle decreased hence the infestation reduced at 45 DAT.

Table 1. Leaf infestation of cabbage by number due to attack of flea beetle at different days after transplanting (DAT) in different treatments

	15 DAT	25 DAT	35 DAT	45 DAT	55 DAT		
T ₁	10.54 b	12.87 d	19.63 c	20.76 b	13.55 de	15.47 c	58.70
T ₂	11.67 b	15.88 c	17.75 d	14.79 f	14.31 c	14.88 d	60.27
T ₃	8.88 c	10.51 e	9.72 e	15.81 e	13.98 cd	11.78 f	68.55
T ₄	2.62 e	4.22 f	8.47 f	7.01 g	6.87 g	5.84 g	84.42
T ₅	10.88 b	19.66 b	18.01 d	17.67 c	12.53 e	15.75 c	57.95
T ₆	5.17 d	16.83 c	19.82 c	16.33 d	15.68 b	14.76 d	60.58
T ₇	11.18 b	20.69 b	21.19 b	18.90 b	16.13 b	17.02 b	54.56
T ₈	6.10 d	9.59 e	19.15 c	16.68 d	10.78 f	12.46 e	66.73
T ₉	18.63 a	32.38 a	44.74 a	47.65 a	43.88 a	37.41 a	--
LSD _(0.05)	1.07	1.04	1.01	0.48	0.94	0.46	--
CV%	6.48	3.81	2.93	1.46	3.29	1.64	--

[In column, means containing same letter(s) indicate significantly similar under DMRT at 5% level of significance, T₁ = Sevin 85WP @ 2.0 g/L of water, T₂ = Decis 2.5 EC @ 1.0 ml/L of water, T₃ = Voliam flexi @ 0.5 ml/L of water, T₄ = Ripcord 10EC @ 1.0 ml/L of water, T₅ = Dursban 20EC @ 1.0 ml/L of water, T₆ = Tobacco leaf extract @ 3.0 g/L of water, T₇ = Neem seed kernel extract @ 3.0 g/L of water, T₈ = Bioneem plus 1 EC @ 1.0 ml/L of water, T₉ = Untreated control].

3.2 Number of holes/head of a plant at different days after transplanting (DAT)

The significant variations were observed among different treatments used for the management practices in terms of number of holes/infested head of a plant due to attack of flea beetle at different days after transplanting (DAT). In terms of mean infestation/head of cabbage, the highest infestation was found in T₉ (14.87) which was significantly different from all other treatments. Among the management practices, the highest infestation was found in T₇ (9.33) which is statistically similar with T₅ (8.93), T₁ (8.40) and T₂ (8.40) followed by T₆ (7.87) and T₈ (7.60). On the other hand, the lowest

mean infestation was observed in T₄ (6.13) which was followed by T₃ (6.87). In case of percent reduction over control, the highest reduction over control was achieved by T₄ (58.74%) where the lowest was found in T₇ (37.22%) which was very close to T₅ (39.99%). From the above mentioned finding it was revealed that among the different treatments, T₄ performed best in reducing the infestation intensity of leaf of cabbage by number of holes (58.74 %) due to attack of flea beetle than the other treatments; whereas, T₇ showed the least performance in reducing the infestation intensity of leaf of cabbage by number of holes (37.22%) over control.

Table 2. Infestation intensity of leaf of cabbage by number of holes due to attack of Flea beetle at different days after transplanting (DAT) in different treatments

[In column, means containing same letter(s) indicate significantly similar under DMRT at 5% level of significance, T₁ = Sevin 85WP @ 2.0 g/L of water, T₂ =Decis 2.5 EC @ 1.0 ml/L of water, T₃ = Voliam flexi @ 0.5 ml/L of water, T₄ = Ripcord 10EC @ 1.0 ml/L of water, T₅=Dursban 20EC @ 1.0 ml/L of water, T₆ = Tobacco leaf extract @ 3.0 g/L of water, T₇ = Neem seed kernel extract @ 3.0 g/L of water, T₈ = Bioneem plus 1 EC @ 1.0 ml/L of water, T₉ = Untreated control].

3.3 Percent (%) head infestation by number at vegetative stage

Treatments	No. of holes / plant					Mean	% reduction over control
	15 DAT	25 DAT	35 DAT	45 DAT	55 DAT		
T ₁	6.67 b	7.67 bc	9.67 bc	10.00 cd	8.00 bcd	8.40 bc	43.49
T ₂	5.67 bc	7.67 bc	9.67 bc	11.00 bc	8.00 bcd	8.40 bc	43.49
T ₃	5.67 bc	6.00 cd	7.67 d	9.33 cde	6.67 b	6.87 de	52.46
T ₄	4.67 c	5.00 d	6.33 e	7.67 e	7.00 cd	6.13 e	58.74
T ₅	6.67 b	8.00 b	9.67 b	12.00 b	8.33 bc	8.93 b	39.91
T ₆	6.00 bc	6.67 bc	8.33 cd	11.00 bc	7.33 bcd	7.87 c	47.08
T ₇	7.33 b	8.33 b	10.33 b	12.00 b	8.67 b	9.33 b	37.22
T ₈	6.00 bc	7.00 bc	8.67 cd	8.67 de	7.67 bcd	7.60 cd	48.87
T ₉	11.00 a	14.00 a	16.67 a	18.33 a	14.33 a	14.87 a	--
LSD (0.05)	1.59	1.57	1.32	1.79	1.37	0.92	--
CV%	13.85	11.65	7.90	9.31	9.36	6.05	--

Significant variations were observed among the different treatments used for the management practices in terms of % head infestation by number due to attack of flea beetle at different days after transplanting (DAT) (Table 3). In case of mean infestation, the highest % head infestation (43.93%) was recorded in T₉ which was significantly different from all other treatments. But in case of treated plots, T₇ (26.83%) showed the highest % head infestation by number which was statistically similar with T₅ (26.39%) followed by T₁ (23.70%). On the other hand, the lowest % head infestation by number (18.04%) was held in T₄ which was statistically similar with T₃ (18.31%) and closely followed by T₈ (19.21%). But the rate of % head infestation by number incidence was decreasing with the increase of the age of the cabbage plants within the treated plots. opposite feature was found in T₉ i.e. gradually increased % head infestation by number was found with the increase of the age of the cabbage.

In case of % reduction over control, the highest reduction over control was achieved by T₄ (58.93%) which was closely followed by T₃ (58.32%). Whereas the lowest reduction over control was found in T₇ (38.93%) which was very close to T₅ (39.94%) (Table 3). Stanislav in 2005 also found similar results in the infestation by using some biological and cultural practices [13].

Table 3. Infestation of cabbage plant by number due to attack of flea beetle at different days after transplanting (DAT) in different treatments

Treatment s	% infestation of head					Mean	% reduction over control
	25 DAT	35 DAT	45 DAT	55 DAT	65 DAT		
T ₁	21.67 d	26.46 d	39.32 b	16.57 d	14.48 b	23.70 c	46.06
T ₂	20.36 d	28.39 d	32.34 e	12.92 e	10.64 d	20.93 d	52.36
T ₃	15.92 f	18.47 f	34.86 d	10.64 f	11.67 cd	18.31 fg	58.32

T ₄	16.57 f	20.36 ef	32.34 e	12.49 e	8.46 e	18.04 g	58.93
T ₅	27.35 c	31.50 c	39.32 b	21.28 b	12.49 c	26.39 b	39.94
T ₆	18.78 e	22.00 e	31.50 e	18.78 c	8.26 e	19.86 e	54.79
T ₇	29.05 b	34.86 b	36.80 c	20.36 b	13.08 bc	26.83 b	38.93
T ₈	18.47 e	22.00 e	28.39 f	16.57 d	10.64 d	19.21 ef	56.27
T ₉	36.80 a	55.13 a	56.39 a	31.50 a	39.85 a	43.93 a	--
LSD _(0.05)	1.52	3.06	1.71	1.34	1.54	0.96	--
CV%	3.83	6.14	2.69	4.31	6.16	2.29	--

[In column, means containing same letter(s) indicate significantly similar under DMRT at 5% level of significance, T₁ = Sevin 85WP @ 2.0 g/L of water, T₂ = Decis 2.5 EC @ 1.0 ml/L of water, T₃ = Voliam flexi @ 0.5 ml/L of water, T₄ = Ripcord 10EC @ 1.0 ml/L of water, T₅ = Dursban 20EC @ 1.0 ml/L of water, T₆ = Tobacco leaf extract @ 3.0 g/L of water, T₇ = Neem seed kernel extract @ 3.0 g/L of water, T₈ = Bioneem plus 1 EC @ 1.0 ml/L of water, T₉ = Untreated control].

3.4 Leaf infestation intensity at harvesting

Significant variations were observed among the different treatments used for the management practices in terms of leaf infestation intensity due to attack of flea beetle during harvesting period (Table 4). The highest leaf infestation intensity (22.66%) was recorded in T₉ which was significantly different from all other treatments. But in the treated plots, the highest leaf infestation intensity was found in T₇ (14.61%) which was statistically similar with T₅ (13.96%) and T₁ (13.46%) followed by T₂ (10.96%). On the other hand, the lowest leaf infestation intensity was observed in T₄ (5.73%) which was significantly different from all other treatments followed by T₃ (8.98%) and T₈ (10.77%). The results obtained from other treatments showed intermediate level of leaf infestation intensity. In case of % reduction over control, the highest reduction over control on leaf infestation intensity was achieved by T₄ (74.69%) where the lowest was found in T₇ (35.53%) which was very close to T₅ (38.39%). During the harvesting time the infestation rate is lower than the vegetative stages as the temperature increases. At harvesting the cabbage leaf grows older it may be a reason of low infestation.

Table 4. Infestation intensity of leaf of cabbage by flea beetle in different treatments in different treatments during harvesting

Treatments	% leaf infestation at harvest	% reduction over control
T ₁	13.46 b	40.60
T ₂	10.96 c	51.53
T ₃	8.98 d	60.35
T ₄	5.73 e	74.69
T ₅	13.96 b	38.39
T ₆	10.92 c	51.80
T ₇	14.61 b	35.53
T ₈	10.77 c	52.47
T ₉	22.66 a	--
LSD _(0.05)	1.26	--
CV%	5.87	--

[In column, means containing same letter(s) indicate significantly similar under DMRT at 5% level of significance, T₁ = Sevin 85WP @ 2.0 g/L of water, T₂ = Decis 2.5 EC @ 1.0 ml/L of water, T₃ = Voliam flexi @ 0.5 ml/L of water, T₄ = Ripcord 10EC @ 1.0 ml/L of water, T₅ = Dursban 20EC @ 1.0 ml/L of water, T₆ = Tobacco leaf extract @ 3.0 g/L of water, T₇ = Neem seed kernel extract @ 3.0 g/L of water, T₈ = Bioneem plus 1 EC @ 1.0 ml/L of water, T₉ = Untreated control].

3.5 Percent (%) infestation of head by number during harvesting

Significant variations were observed among the different treatments used for the management practices in terms of number of % infestation of head by number due to attack of flea beetle during harvesting period (Table 5). The highest % infestation of head by number (37.60) was recorded in T₉

which was significantly different from all other treatments. But in the treated plots, the highest % infestation of head by number was found in T₇ (12.92) and the lowest % infestation of head by number was observed in T₄ (6.69). The results obtained from other treatments gave intermediate level of % infestation of head by number. In case of percent reduction over control, the highest reduction over control on percent infestation of head by number was achieved by T₄ (82.18%) where the lowest was found in T₇ (65.64%).

Table 5. Incidence of cabbage flea beetle in the infested head due to attack of flea beetle in different treatments at harvesting

Treatments	% head infestation at harvest	% reduction over control
T ₁	11.44 bc	69.57
T ₂	10.64 c	71.70
T ₃	7.50 d	80.05
T ₄	6.69 d	82.18
T ₅	11.92 bc	68.30
T ₆	8.04 d	78.62
T ₇	12.92 b	65.64
T ₈	7.67 d	79.60
T ₉	37.60 a	--
LSD _(0.05)	1.53	--
CV%	6.95	--

[In column, means containing same letter(s) indicate significantly similar under DMRT at 5% level of significance, T₁ = Sevin 85WP @ 2.0 g/L of water, T₂ = Decis 2.5 EC @ 1.0 ml/L of water, T₃ = Voliam flexi @ 0.5 ml/L of water, T₄ = Ripcord 10EC @ 1.0 ml/L of water, T₅ = Dursban 20EC @ 1.0 ml/L of water, T₆ = Tobacco leaf extract @ 3.0 g/L of water, T₇ = Neem seed kernel extract @ 3.0 g/L of water, T₈ = Bioneem plus 1 EC @ 1.0 ml/L of water, T₉ = Untreated control].

3.6 Diameter and height of cabbage head

Significant variations were observed among the different treatments used for the management practices in terms of height and diameter of head due to attack of flea beetle during harvesting period. The highest height of head (13.77 cm) was recorded in T₄ and the lowest head height (9.90 cm) was found in T₉ which was significantly different from all other treatments. But in the treated plots, the lowest head height (12.26 cm) was found in T₇. The highest diameter of head (20.62 cm) was recorded in T₄ and the lowest head diameter (13.78 cm) was found in T₉ which was significantly different from all other treatments. But in the treated plots, the lowest head diameter (16.19 cm) was found in T₇. Ester also found more or less similar result in an experiment in 2003 [14].

3.7 Single head weight (kg) and yield (t ha⁻¹) of cabbage

Significant variations were observed among the different treatments used for the management practices in terms of single head weight(kg) and yield(t/ha) due to attack of flea beetle. The highest single head weight (2.19 kg) was recorded in T₄ and the lowest single head weight (1.04 kg) was found in T₉. But in the treated plots, the lowest single head weight (1.44 kg) was found in T₇. The highest total yield (75.76 t/ha) was recorded in T₄ and the lowest total yield (35.65 t/ha) was found in T₉ which was significantly different from all other treatments. But in the treated plots, the lowest total yield (49.67 t/ha) was found in T₇.

Table 6. Effect of different treatments on yield and yield contributing characters of Cabbage

Treatments	Height	Diameter	Single head wt. (kg)	Total yield(ton/ha)
T ₁	12.52 bc	16.96 e	1.67 c	58.40 d
T ₂	12.69 bc	17.10 e	1.70 c	58.74 d
T ₃	13.12 ab	20.05 b	1.95 b	66.95 b
T ₄	13.77 a	20.62 a	2.19 a	75.76 a

T ₅	12.39 bc	16.21 f	1.46 d	50.52 e
T ₆	12.72 bc	18.07 d	1.83 bc	62.69 c
T ₇	12.26 c	16.19 f	1.44 d	49.67 f
T ₈	12.87 bc	18.65 c	1.94 b	66.76 b
T ₉	9.90 d	13.78 g	1.04 e	35.65 g
LSD _(0.05)	0.66	0.47	0.16	0.52
CV%	3.06	1.55	5.70	5.51

[In column, means containing same letter(s) indicate significantly similar under DMRT at 5% level of significance, T₁ = Sevin 85WP @ 2.0 g/L of water, T₂ = Decis 2.5 EC @ 1.0 ml/L of water, T₃ = Voliam flexi @ 0.5 ml/L of water, T₄ = Ripcord 10EC @ 1.0 ml/L of water, T₅ = Dursban 20EC @ 1.0 ml/L of water, T₆ = Tobacco leaf extract @ 3.0 g/L of water, T₇ = Neem seed kernel extract @ 3.0 g/L of water, T₈ = Bioneem plus 1 EC @ 1.0 ml/L of water, T₉ = Untreated control].

3.8 Relationship between leaf infestation intensity and yield (t/ha)

The results revealed that there was strong negative correlation between leaf infestation intensity and total yield/ha, which suggested that with the increase of leaf infestation intensity there was a significant influence on total yield/ha. A linear regression was fitted between total yield/ha weight and leaf infestation intensity (Fig.1). The correlation coefficient (r) was - 0.789 and the contribution of the regression (R²) were 0.623. In the present study, it was observed that flea beetle infestation on leaf passively prevented plants to produce and supply nutrient and water. The plants became stunted with a reduced yield.

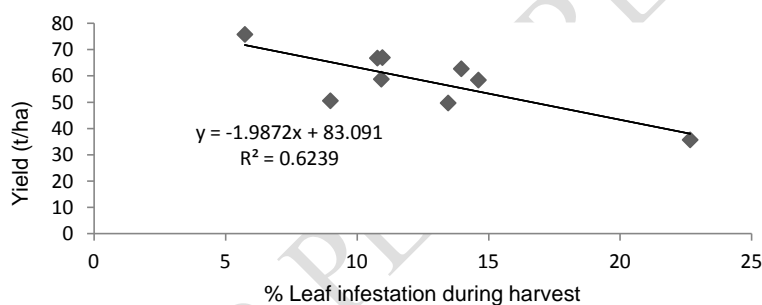


Fig.1. Relationship between leaf infestation intensity and yield (t/ha) of cabbage

3.9 Relationship between percent head infestation during harvest and wt. of individual head

The results revealed that there was strong negative correlation between leaf infestation intensity and total yield/ha, which suggested that with the increase of head infestation intensity there was a significant influence on total yield/ha. A linear regression was fitted between total yield/ha weight and head infestation intensity (Fig.2). The correlation coefficient (r) was - 0.642 and the contribution of the regression (R²) were 0.413. In the present study, it was observed that flea beetle infestation on head passively prevented plants to produce and supply nutrient and water. The plants became stunted with a reduced yield.

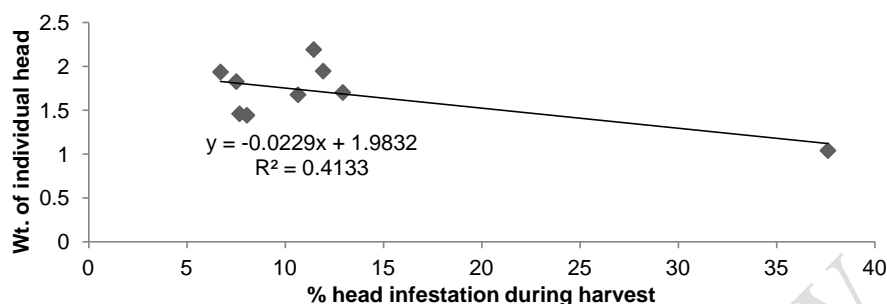


Fig.2. Relationship between percent head infestation during harvest and wt. of individual head among different treatments.

CONCLUSION

The result of the current analysis suggests that among the different treatments T_4 comprised of Ripcord 10EC @ 1.0 ml/L of water at 7 days interval gave the highest performance where the lowest performance was obtained by control treatment. On the other hand, the lowest performance among the treated plots was achieved by T_7 (Neem seed kernel extract @ 3.0 g/L of water at 7 days interval). While among the biopesticides, Bioneem plus 1 EC performed the best.

REFERENCES

1. Butani DK and Jotwani MG. Insects in vegetable. Periodical Expert Book Agency. Vivek-Vihar, Delhi, India. 1984; 69-79.
2. Bhat MG, Joshi AB and Singh M. Relative losses of cotton yield by insects in some cotton genotypes (*Gossypium hirsutum* L.) *Indian J. Entomol.* 1994; 46: 169-172.
3. Csonka E and Toth M. Comparison of KLP+ ("hat") and VARL+ (funnel) trap designs baited with allyl isothiocyanate for the capture of cabbage flea beetles (*Phyllotreta* spp.) (Coleoptera, Chrysomelidae). Budapest, Hungary: Agroinform Kiado. 2006; 425-427.
4. Palaniswamy and Lamb. A laboratory method to screen crucifer seedlings for antixenosis resistance to flea beetles, *Phyllotreta Cruciferae* Can. Ent. 1992; 124: 895-906.
5. Dillard HR, Cobb AC and Lamboy JS. Transmission of *Alternaria brassicicola* to cabbage by flea beetles (*Phyllotreta cruciferae*). *Plant Dis.* 1998; 82: 153-157.
6. Vern Grubinger. Handbook of Vegetable Pests. Academic Press. San Diego, California. 2003; 76.
7. Joshi MJ, Solanki CB, Inamdar AG, Birari VV and Varadharasu PR. Latest trends in zoology and entomology sciences. In: D.S. Ganguly (ed.), Botanical Insecticides: A Venture toward Organic Farming. Delhi, India: AkiNik Publications. 2020; 53-75.
8. Siddiqui N, Kozlov G, D'Orso I, Trempe JF and Gehring K. Solution structure of the C-terminal domain from poly(A)-binding protein in *Trypanosoma cruzi*: a vegetal PABC domain. *Protein Sci.* 2003; 12(9): 1925-33.
9. Isman MB. Botanical insecticides, deterrents, and repellents in modern agriculture and an increasingly regulated world. *Annual Rev. J. Entomol.* 2006; 51: 45-66.
10. BARC. Fertilizer Recommendation Guide-2012. Bangladesh Agricultural Research Council, Farmgate, New Airport Road, Dhaka-1215. 2012; 113.
11. Gomez KA and Gomez AA. Statistical procedures for Agricultural Research. Second Edition. A Wiley Interscience Publications John Wiley and Sons, New York, Chichester, Toronto, Singapore. 1984; 680.
12. Islam MR, Ali MR, Ahmed WR, Rahman MM And Hira H. Varietal performance of cabbage on the incidence of flea beetles (*Phyllotreta* spp.) *Entomologia Hellenica*. 2015; 24: 1-10.

13. Stanislav T, Nevenka V, Dragan Z , Matej V, Klemen B, Emil Z and Lea Milevoj. The role of Chinese cabbage as a trap crop for flea beetles (Coleoptera: Chrysomelidae) in production of white cabbage. *Scientia Horticulturae* . 2005;106 : 12–24.

14. Ester A, De Putter H and Van Bilsen JGPM. Filmcoating the seed of cabbage (*Brassica oleracea* L. *convar. capitata* L.) and cauliflower (*Brassica oleracea* L. *var. botrytis* L.) with imidacloprid and spinosad to control insect pests. *Crop Prot.* 2003. 22:761–768.

UNDER PEER REVIEW