

GLOBAL WARMING - CAUSES, IMPACTS AND MITIGATION STRATEGIES IN AGRICULTURE

Jhanvi Saini¹ and Rajan Bhatt²

¹University institute of Engineering and Technology, Panjab University, Chandigarh, India

²PAU, Regional Research Station, Kapurthala, 144601, Punjab, India.

ABSTRACT

Global warming- a new global challenge in front of agricultural scientists, affecting almost all the climatic parameters involving air temperature and rainfall intensity, and distributions. Elevated levels of green house gases (GHGs) viz. carbon dioxide, methane, nitrous oxide etc. are only because of faulty agricultural practices viz. intensive tilling, burning of crop residues, which further adversely affecting the both land and water productivity. As per one projection that global surface air temperatures may increase by 4.0–5.8 °C in upcoming few decades which offset the likely benefits of increasing atmospheric concentrations of carbon dioxide on crop plants. Over space and time, new environmental conditions created which might be responsible for frequent droughts, higher temperatures, flooding, salinity, increased carbon dioxide levels, rise in sea-level, irregular rainfall patterns and shifting of pest dynamics etc. Therefore, global warming cycle needs to break down through forestation, using crop residues on soil as mulch or in soils as biochar instead of burning, and adopting certain agricultural practices or developing new plant cultivars which responds to CO₂ under higher temperature conditions etc which helps to reduces rather mitigate the adverse effects of the global warming. Further, changes in diets, minimum tillage operations and reductions in food wastage will also serve the purpose. Present review highlighted the crucial reasons for global warming, its impacts on agriculture and finally on mitigation strategies, which helps to improve the agricultural productivity and finally livelihoods of the farmers.

KEY WORDS: Global Warming, Green house gases, Biochar, Global population

1. INTRODUCTION

Global temperature boost in basic words could be articulated as warming of the globe including earth's surface which is liable for raised degrees of air temperature and environmental CO₂, undistributed and profoundly high rainfall liable for higher soil erosion, early liquefying of ice sheets, ascend in ocean levels, diminished capacity limit of the dams that brings floods in low lying zones [1]. Earth's air adjusts the interception of solar radiation as while earth's surface for the most part retains short wave radiations which reradiates by earth's surface as long wave radiations both back to environment and afterward again practical which further warmth up earth surface once more [2]. This prompted environmental change by one or other which speaks to a noteworthy change, that is, a change with significant monetary, ecological, and social impacts, in the mean estimations of a meteorological component, for example, temperature and measure of precipitation during a specific period, for which the methods are figured over 10 years or more [3]. Various variables answerable for this, anyway agrarian exercises shared just 10–12% of the complete worldwide anthropogenic outflows of GHGs [4]. Two regular topics all through the survey incorporate A) tending to beef industry and consumption and B) escalation and expanded

proficiency in the farming worth chain. Domesticated animals mostly used for beef industry represents approximately 70 percent of agrarian emissions, where India is far behind as significant portion is vegetarian. Changing diet habits from non-vegetarian to vegetarian will lessen methane emissions, and thereby reduces impacts of global warming both on agriculture and finally on the humans.

Globally, [5] delineated that total food consumption (kcal day⁻¹) in 2005/2007 and total increase by 2050 shown in Fig. 1 where light colored boxes represent absolute consumption in

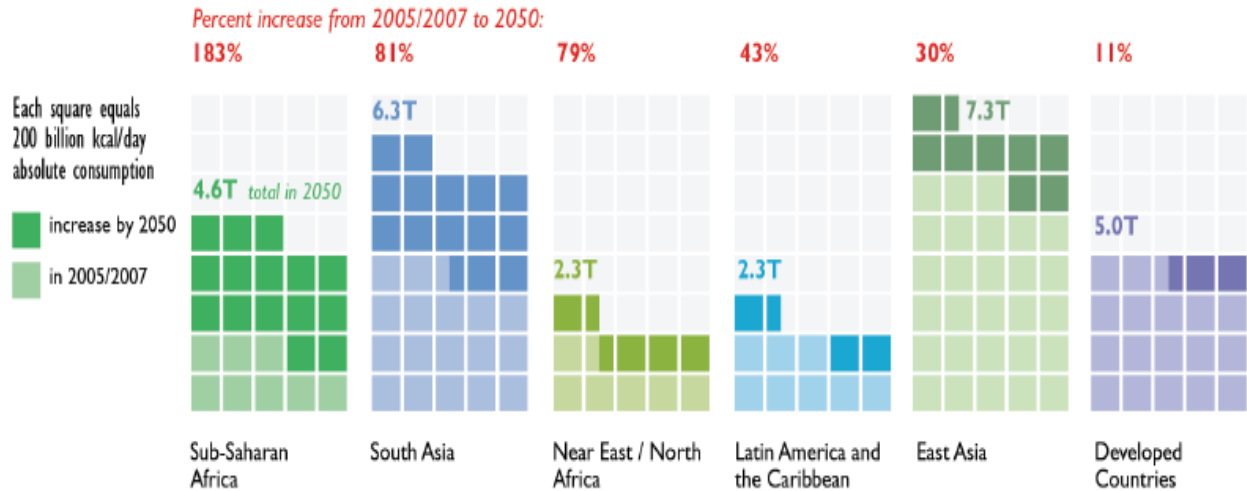


Fig. 1. Growth in total food consumption by 2050, relative to 2005/2007 Source: CEA analysis based on: Alexandratos and Bruinsma, 2012.

2005/2007 and dark colored boxes represent the growth in absolute consumption from 2005/2007 to 2050 while Growth in food consumption by 2050, relative to 2005-2007 delineated in Fig. 2.

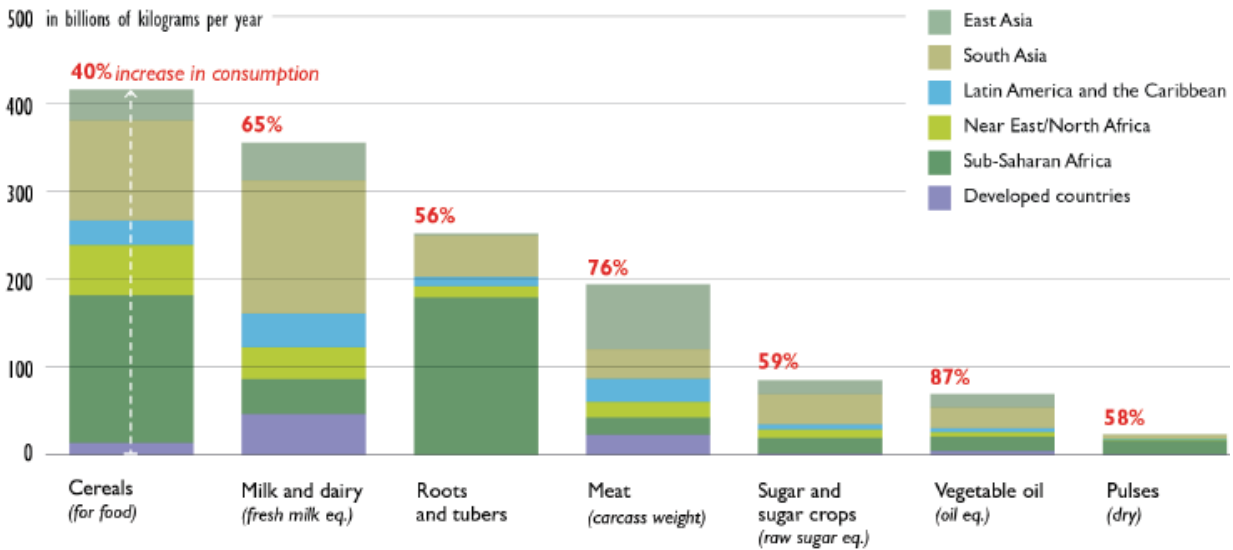


Fig. 2. Growth in food consumption by 2050, relative to 2005-2007 Source: CEA analysis based on: Alexandratos and Bruinsma, 2012

For deforestation, data is the average annual rate from 2000–2005 (by way of comparison, the rate of global deforestation by area has increased in recent years). Peat and fire emissions show the range of emissions for the years 2000–2008. Direct agricultural production emissions are from 2008. Other supply chain emissions are from varying years, mostly 2004–2010 (Fig. 3).

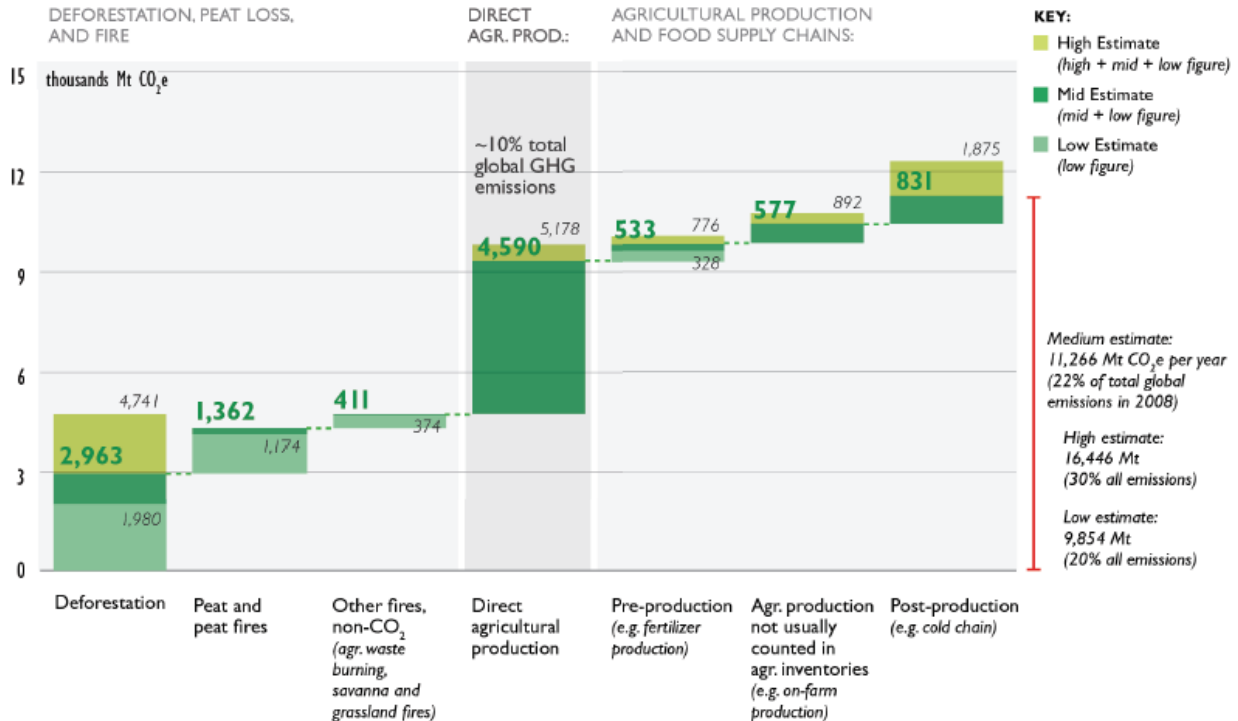
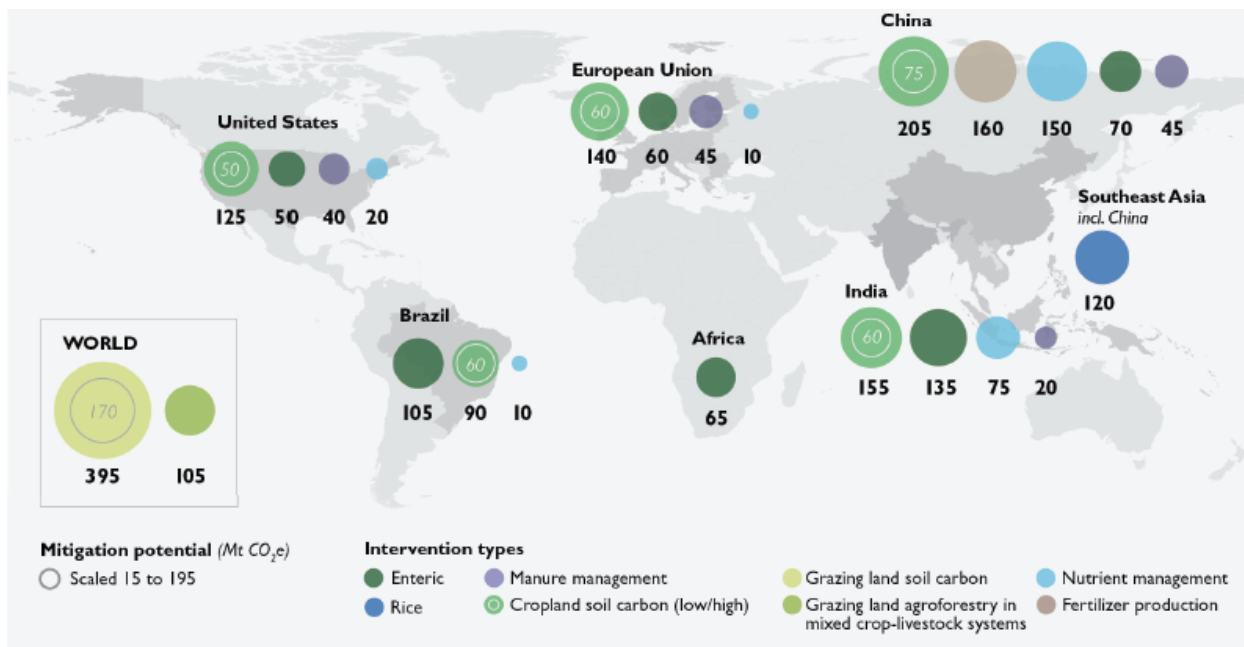


Fig. 3. Global agriculture and land use change emissions. Source: CEA analysis based on: Alexandratos and Bruinsma 2012

Coming over to the global mitigation opportunities, [5] in their report highlighted that setting aside constraints weather of political or economic, reducing agricultural greenhouse gases emissions from agricultural sector centered on U.S., E.U., China, India, and Brazil. Agroforestry systems might having adoption potential among different agricultural systems but supporting data on mitigation potential pertaining to agro-forestry is limited. Estimation of carbon sequestration on croplands and grazing lands has very high levels of uncertainty. Around 0.7 and 1.6 Gt CO₂e per year may be sequestered in cropland and grazing land soils, and in agroforestry systems by 2030. Further, sequestering more carbon in agricultural lands is possible, both in the land and in plant biomass. Further, an upper and lower estimate of mitigation potential existed there based on different assumptions. The mitigation potential in terms of Mt CO₂e using the high and low estimates delineated on the global basis by the two circles in the Fig 4. (http://www.climateandlandusealliance.org/wp-content/uploads/2015/08/Executive_Summary_Mitigating_Climate_Change_in_Agriculture.pdf)



United States	Brazil	European Union	India	China	Southeast Asia (incl. China)
<p>125. Croplands: Soil carbon sequestration (biochar), high</p> <p>50. All ruminants: Enteric fermentation reduction</p> <p>40. All livestock: Stored manure management</p> <p>20. All crops: Nutrient management</p>	<p>105. All ruminants: Enteric fermentation reduction</p> <p>90. Croplands: Soil carbon sequestration (biochar), high</p> <p>10. All crops: Nutrient management</p>	<p>140. Croplands: Soil carbon sequestration (biochar), high</p> <p>60. All ruminants: Enteric fermentation reduction</p> <p>45. All livestock: Stored manure management</p> <p>10. All crops: Nutrient management</p>	<p>155. Croplands: Soil carbon sequestration (biochar), high</p> <p>135. All ruminants: Enteric fermentation reduction</p> <p>75. All crops: Nutrient management</p> <p>20. All livestock: Stored manure management</p>	<p>205. Croplands: Soil carbon sequestration (biochar), high</p> <p>160. Supply chain: Fertilizer production</p> <p>150. All crops: Nutrient management</p> <p>70. All ruminants: Enteric fermentation reduction</p> <p>45. All livestock: Stored manure management</p>	<p>120. Rice: Water and rice straw management</p> <p>Greater Horn of Africa</p> <p>65. All ruminants: Enteric fermentation reduction</p> <p>World</p> <p>395. Grazing Lands: Soil carbon sequestration, high</p> <p>105. Grazing Lands: Agroforestry in mixed crop-livestock systems</p>

Fig. 4. Geographical distribution of mitigation potentials (technical potential) Source: CEA analysis based on: Alexandratos and Bruinsma, 2012.

Generally, carbon sequestration appeared to decrease with time in most rice based cropping sequences, such as rice-wheat systems [6]. For establishing paddy, more particularly on the coarse textured soils, extensive tillage operations performed in the standing water commonly termed as puddling which further decreased the carbon stored in the soil, deteriorated the soil structure, seals the soil pores and hence, reduces the aeration after forming the plow pan [7]. Moreover, due to higher use of doses of chemical fertilizers, excessive disturbance of the soil and removal/burning of residues in the fields, reduces the carbon status and hence health of the soil [8]. Advanced agricultural managements viz. minimum soil disturbances and increased residue retention will increase soil carbon in the rice-based systems [9]. Further, farmers must be encouraged for the sustainable agriculture by improving the carbon inputs, soil health and reducing the emission of greenhouse gases viz. CO₂, CH₄ and N₂O through introducing the concept of zero tillage, minimum tillage and providing different economic and viable options for

the residue management and mitigates the effects of rice-based cropping systems on climate change [10,11, 12, 13].

Further, biogas production must be encouraged, as one side it provide us kitchen gas while on other produces slurry which could be used in fields. Therefore, present agricultural research must be confined to production system with least production of green house gases and that might be by different approached *viz.* use of slow nutrient release fertilizers *viz.* neem coated urea, polycoated urea etc., green manuring, farm yard manures, compost and by fermented paddy compost. Burning of crop residues particularly of paddy must be discouraged by providing different viable options *viz.* happy seeder, use of straw management systems (SMS) behind the combines, biogas production, electricity production, for mushroom cultivation etc.

2. CAUSES OF GLOBAL WARMING AND IT'S EFFECTS

Green house gases *viz.* CO₂, CH₄, N₂O and in some cases chlorine and bromine containing compounds etc. are the major cause for the warming of our globe. Therefore, answer lies in its controlled emissions by one or other approach or either through an integrated approach. The accumulation of these gases responsible for the changed radiative equilibrium of the atmosphere (which ultimately responsible for the warming of our atmosphere) as greenhouse gases allowed entry of incoming short wave radiation but as they tried to go back as long wave radiation, GHGs absorbed them. The net warming from 1850 to the end of the 20th century was equivalent to nearly 2.5 W m⁻² with 60% of carbon dioxide contribution.. (<https://www.scribd.com/document/410293861/evs-term-paper-docx>). Decreased ozone levels over Antarctica was earlier reported [14] of the British Antarctic Survey and he published an article in whom response CFCs (used as aerosol propellants in industrial cleaning fluids and in refrigeration tools) were the cause of the problem. Therefore, different programmes organized even at international levels to cut down production of GHGs responsible for global warming. Under ultraviolet light, these gases dissociate releasing chlorine atoms which then catalyses ozone destruction (https://en.wikipedia.org/wiki/Ozone_depletion). Aerosols scattered and absorbed solar and infrared radiations and secondly alter the microphysical and chemical properties of clouds and perhaps affect their lifetime and extent. Absorption of solar radiation by aerosols warms the air directly instead of permitting sunlight to be absorbed by Earth's surface. Crop residue burning produces a mixture of organic droplets and soot particles. Many industrial processes produce a wide diversity of aerosols, while exhaust emissions from various sorts of transport produce a rich mixture of pollutants that are either aerosols from the outset or are transformed by chemical reactions in the atmosphere to form aerosols [14].

Many natural processes that cause rain, snowfall, hailstorms, rise in sea levels is related to impacts of global warming. Further, predicting the size of emissions of greenhouse gases in the upcoming years is not easy assignment. Under global warming, CO₂ concentration increased, global air temperature increased, extra water vapor converts in sudden and heavy rains which leads to floods in various regions of the world. Higher the air temperature, higher will be the evaporation, thereby share of transpiration lessens which further reduces inflows of the nutrients in the plants and finally reduces the both water and land productivity. Higher evaporation losses further promoted to drought in the regions, which further had a negative impacts on the production level more particularly under critical growth stages.

Regions dependent on the melting water from snowy mountains may suffer drought and scarcity of water supply because the glaciers all over the world are shrinking at a very rapid rate and melting of ice appears to be faster than previously projected

(<https://www.coursehero.com/file/p2ge5dl/drought-in-the-regions-where-increased-evaporation-process-is-not-compensated/>). As per Intergovernmental Panel on Climate Change (IPCC), about one-sixth world population might suffer from droughts. More heat waves, intensive and frequent rains, floods, hailstorms and thunderstorms, higher seas levels are the some end effects of the global warming. Global temperature might increased in the upcoming years if some immediate and urgent steps are not implemented (Fig. 5). Mainly, industrialization, setting up of power houses, intensive tillage, burning of crop residues instead of incorporating in the soil are the main factors which significantly enhances the intensity of global warming right from the 20th century.

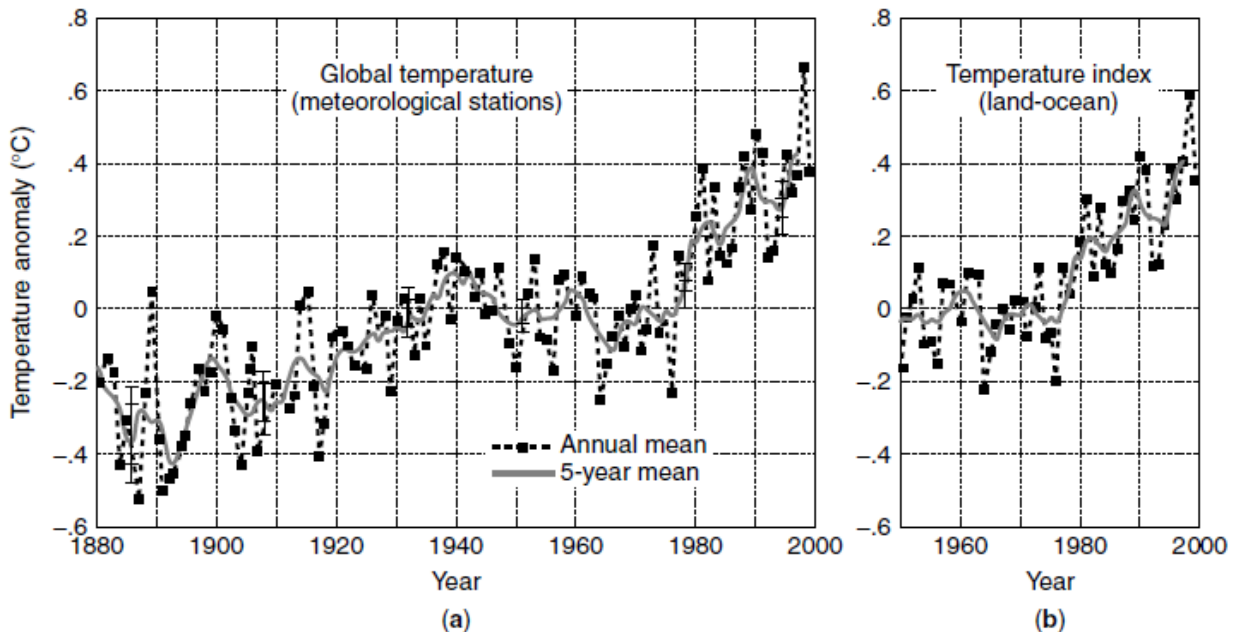


Fig. 5 Near-global annual-mean surface air temperature change, based on meteorological station network (a), global land-ocean surface temperature index (b)

Source: https://www.researchgate.net/publication/319576553_Global_Temperature.

3. IMPACTS OF GLOBAL WARMING ON AGRICULTURE

Agriculture being dependent on the weather parameters viz. ambient temperature, green water status, relative humidity etc. affected by the outcomes of global warming [15]. Weather change assumes a critical job in a country's nourishment security and economy, particularly in a India [16]. All farming products are delicate to environmental change or atmosphere inconstancy [17]. As a result of climate change, decline in rice yields to a level of 15% and a subsequent 12% increase in rice prices, is forecasted by International Food Policy Research Institute (IFPRI) by 2050 in developing countries like India. IFPRI, 2010 forecasted a 31.2% price hike for rice even in the optimistic scenario from 2010 to 2050. Reduction in 48.63% of land productivity by the year 2100 was estimated by Kumar et al., 2016, based on simulation techniques considering the effects of climate change. IFPRI, 2010 forecasted hike in rice price to about 31.2% even in the good conditions from 2010 to 2050. However, it may further rise because of reduction in the agricultural land upto 2100 as per one estimate by Kumar et al., 2016. The rising temperature and CO₂ and vulnerabilities in precipitation related with worldwide environmental change have genuine immediate and aberrant ramifications for crop creation and nourishment security [18].

Future agrarian methodologies/technologies subsequently need to be invented, tested and thus recommended for different soil textural class under different agro-climatic conditions on efficiency, maintainability, benefit, security, and values which thusly would prompt improved nourishment security, employments, and ecological security [19]. The impacts of changes in temperature, CO₂ levels, and precipitation on crop production have been concentrated broadly utilizing crop renewal models [20]. The joined impacts of environmental change may have suggestions for dryland and irrigated conditions and cultivation in India by 2080–2100 because of a worldwide alteration in CO₂ levels, temperature and rainfall [21, 20, 22, 23]. Further effect of global warming viz. of higher CO₂ and temperature on the agriculture could be well understood through the following discussion

3.1. Impact Elevated Levels of Co₂ on Agriculture

CO₂ is basic inputs for photosynthesis and hence for plant development. An expansion in environmental CO₂ focus influences crop creation through modifying photosynthetic and transpiration rates. Evaluation of joined impacts of raised CO₂ and environmental change on the efficiency of a prevailing yields [24]. The immediate impacts of expanded CO₂ levels are valuable to vegetation, particularly for C-3 plants, as raised fixations upgrade absorption rates and increment stomatal obstruction, which bring about a decrease in transpiration and improved water-use proficiency in crops [25] though a few reproduction aspects too. In northwestern India, for instance, yields of rice and wheat expanded by 15% and 28%, individually, at raised CO₂ fixations [26,27]. The impacts of raised CO₂ on land productivity of wheat discussed in Table 1 [28].

Table 1. Variation in simulated wheat yield due to varying CO₂ concentration under differential moisture regimes [28]

CO ₂ Concentration (ppm)	Stimulated grain yield (Kg ha ⁻¹)		Change (%) from base suboptimal and optimal yields	
	<i>Sub-optimal</i>	<i>Optimal</i>	<i>Sub-optimal</i>	<i>Optimal</i>
330 (Base value)	3112	3837	---	---
440	3695	4630	19	21
550	4327	5687	39	48
660	4876	6465	57	68

With the slow increment in CO₂ focus from 440 to 660 ppm, yield expanded from 21% to 68% under ideal conditions, though, under problematic conditions, comparable reactions were seen with somewhat lower sizes (19–57%). Hundal and Kaur [29] showed that with an expansion in CO₂ from 330 to 600 ppm, an increment as high as 11, 8 and 9% improvements recorded in LAI, biomass and grain yield, respectively. Rice developed under raised CO₂ had fundamentally higher land productivity [30]. Panicle dry load in the raised CO₂ treatment was essentially higher than other conditions all through the grain-filling period [30]. In cotton, an expansion in CO₂ levels, brought about a critical increment in final cotton yields [31] (Table 2), primarily owing to

expanded boll dry weight and build up dry weight per boll. Therefore, it could be concluded that elevated CO₂ levels favored higher grain yields.

Table 2: Total dry matter, boll dry weight, lint dry weight and seed dry weight of cotton viz-a-viz. differential CO₂ concentration [31]

CO₂ concentration	Total dry weight (g plant⁻¹)	Boll dry weight (g)	Lint dry weight (g boll⁻¹)	Seed dry weight (g boll⁻¹)
Sub-ambient (180ppm)	165	5.6b	1.8b	2.7b
Ambient (360 ppm)	233b	5.8a	1.8ab	2.8ab
Elevated (720 ppm)	309a	5.9a	1.8a	2.9a

**Means with different letters within column are significantly different at p=0.05*

3.2. Impact of Increased Temperature on Agriculture

Increased temperature affected the overall plant development and grain yields in its own way. An expansion in temperature by 20°C, achieved a 3–10% decline in grain/seed yield of kharif crops viz. rice, groundnut and soybean and a 29% reduction in grain yield of rabi crops viz. wheat [32]. Further, Pandey et al. [29] utilizing the CERES-wheat model delineated a continuous reduction in yield from 3546 to 2646 kg ha⁻¹ under higher temperature varied from 1–3°C which varied to, yield declined from 2841 to 2398 kg ha⁻¹ under problematic conditions, which might be because of decrease in the anthesis length and in grain loading up with an incline in temperature [33]. Under constant weather parameters, a temperature increment of 0.5, 1.0, 2.0, and 3.0 °C, would propel the development of wheat by 3, 6, 12, and 17 days, separately [34] (Table 3). Temperature hike of 1 °C not affected the heading of rice while if this increment promoted to 3 °C then heading and development extended by 4 and 5 days, respectively. Blossoming in soybean was postponed as long as 4 days and its development were deferred by 2 days (Table 3). An investigation shown a quadratic connection between rice yield and least temperature over the scope of 22.1–23.7 °C as yields declined by 10% with each 1°C temperature increment in least temperature and this yield declined further by 15% with each 1°C temperature increments in mean temperature [35].

Table 3. Crop phenology as affected by the temperature increase [34]

Crop and Phenological stages	Deviation from the normal temperature (days)				
	<i>Normal</i>	<i>+0.5 °C</i>	<i>+0.5 °C</i>	<i>+0.5 °C</i>	<i>+0.5 °C</i>
Chicken					
<i>Flowering</i>	08	-4	-7	-19	-23
<i>Maturity</i>	99	-5	-8	-16	-24
Wheat					
<i>Anthesis</i>	41	-3	-6	-12	-16
<i>Maturity</i>	82	-3	-6	-12	-17

Soybean					
Flowering	239	+1	+2	+3	+4
Maturity	294	+1	+1	+2	+2
Rice					
Heading	223	0	0	+1	+4
Maturity	263	+1	+1	+1	+5

^aJulian days (Calendar day)

Therefore, it could be concluded that increments in temperature increment crop-breath rates; lessen crop length, the quantity of grains shaped, and crop yield; repress sucrose osmosis in grains; influence the endurance and dissemination of nuisance populaces; rush supplement mineralization in soil; decline manure use effectiveness; and increment vanishing.

4. MITIGATION STRATEGIES FOR THE GLOBAL WARMING:

Upto now, it is clear that global warming is affecting the plants and agricultural growth by one or other way. Therefore, scientists come out with some technologies which is recommended for mitigating the adverse effect of the global warming, which are discussed below

4.1. Planting Date Modifications

Modification in planting dates is a basic yet useful asset for adjusting with the impacts of potential a worldwide temperature alteration. Krishnan et al. [36] exhibited potential results by modifying the planting time of rice at two destinations by recreating crop development under various environmental change situations. Control of planting dates helped in decreasing yield unsteadiness by shielding blooming from agreeing with the most sizzling developing season [37]. On a few events in the most recent decade, South Asia saw unfavorable impacts of climatic varieties, that is, terminal warmth worry, on wheat efficiency. For instance, regardless of good climate conditions throughout the winter of 2009–2010, an unexpected ascent in night temperature during the grain-filling stage in wheat unfavorably influenced wheat efficiency in the Indo-Gangetic Plains (IGP) and other northern conditions of India [38]. Already, in Punjab scientists shifted the date of nursery sowing from mid May to almost mid June, which helps to saved a significant portion of irrigation water as in June transplanted rice, upcoming months has monsoon rains, which further increases the air humidity and vapour lifting capacity of ambient air decreased and ultimately lesser number of irrigations has to be applied as compared to May transplanted paddy seedlings without much loss to overall land productivity rather water productivity increased [39].

4.2. Mulching-Spreading of Crop Residue on the Bare Soil Surface

Instead of burning crop residues viz. paddy straw in open, it is recommended to use it as mulch under which crop residues spread on the bare soil surface. Mulch acts in the following ways- by hindering hot sunrays from striking at the bare soil surface, reduces surface temperatures, reduces vapor pressure gradient and hence upcoming of water vapors, reduces wind speed and thereby its vapor lifting capacity, finally improved the overall both land and water productivity [40]. Zero tillage is an important resource conservation technology [41, 42], but its performance too decreased even from conventional tillage, if previous practiced after removing all the mulch loads from the soil [43, 44]. Hence practice of mulching mitigate the adverse effects of the global warming and maintains the land productivity one and in all [45, 40, 46, 47].

4.3. New Crop Cultivars

As CO₂ concentration increased in the atmosphere, which further had a significant effects on the plants by affecting its different physiological processes viz. photosynthesis. Therefore, here is the job for the plant breeders to develop cultivars that could profit by the high temperature CO₂ treatment impact. As per one estimate, the vegetation will be decidedly profited by expanded CO₂ focus [26]. This gainful impact will be increasingly articulated for C3 plants, for example, wheat, rice, grain, oats, nut, cotton, sugar beet, tobacco, spinach, soybean, and most trees. In C3 plants, the raised centralizations of CO₂ will prompt higher absorption rates and an expansion in stomatal opposition, bringing about a decrease in transpiration rate and improved water-use productivity in crops.

4.4. Need to Change Feeding Habits

In current period, a significant portion of population shifting from vegetarian diet to non-vegetarian diet and it is estimated that interest for animal items is probably going to increment more than 70 percent internationally between 2005 and 2050. Meat production must also be discouraged by changing the food habits of the nationalists. Enteric aging is stomach related procedure in herbivorous creatures ('ruminants', for example, cows, wild oxen, goats, and sheep). These creatures have a rumen, an enormous four-compartment stomach with a complex microbial population which processes complex sugars with an end product as CH₄, which is a GHG having high global warming potentials. The discharges decrease potential in Brazil, India, U.S. furthermore, E.U. alone adds up to 350Mt CO₂e year⁻¹. Some interventions viz. Improving the nature of scrounges, preparing feeds to improve absorbability, and adding grain-based concentrates to domesticated animals, Enhancements and added substances decrease methane by changing the microbiology of the rumen, for the most part, Improving the wellbeing and conceptive limit of crowds will certainly limits the evaluation of CH₄.

4.5. Reduces Food Wastage

Food wastage is an important but mostly unattended issue, will be certainly useful in mitigating the challenges as it reduces the set targets for the global food production. Reduced targets will certainly reduces the pressure to produce more from less agricultural lands, which further helps to implement different approaches of the conservation agriculture for practicing the sustainable agriculture in the region. As per FAO gauges, around 33% of all nourishment proposed for human utilization is lost. Food wastage started at the purchaser point through decay, spilling or other unintended results The carbon impression of nourishment wastage is assessed at 3.3 Gt CO₂e. Cereals include the best portion of misfortunes by calorie and discharges (53 percent and 34 percent, individually), while leafy foods involve the best portion of misfortunes by weight (44 percent) and the second most noteworthy portion of outflows (21 percent). Although meat wastage is liable for a generally low level of misfortune by calorie and weight (7 percent and 4 percent). In the UK, 64 percent of nourishment wastage is "avoidable." [48]. Measure must be taken to reduce the food wastage as saved food will reduce the target of grain production which further reduces the use of different fertilizers. In India, particularly in Punjab, numbers of marriage palaces are there and all are full during the peak marriage seasons, where a number of marriage functions being organized and ever time, new food items (non-vegetarian, vegetarians followed by sweets, ice-creams etc.) being prepared served to the guests and remainder of the earlier functions disposed off (Bhatt 2020, personal observation). People must be aware of that and may come forward by organizing two to three marriages at a same time,

which decrease personal financial loads on individual parents and on other hand reduces the food wastage. Further, NGOs may come forward to redistribute the left-over food of these functions to the poor who otherwise could not afford it.

4.6. Reducing Methane Emissions from Rice Cultivation

Rice cultivation plays a major role in global warming by green house gas emissions [49,50]. Matthews et al. [51] identified that 55% of the annual methane emission over rice growing areas is concentrated into four months, from July to October i.e. the predominant rice cultivation season. The average methane emissions varied from 0.65 to 1.12 mg m⁻² h⁻¹ [52]. Increased atmospheric CO₂ and 1⁰C degree rise in temperature have been shown to increase GHG intensity by 31.4% and 11.8% respectively and decreases rice yield [53]. It was reported that, transport of over 90% of methane to the atmosphere, is through rice plants [54]. During the production of 1 kg of rice grain, 100 g of methane is emitted. The default methane baseline emission factor is 1.3 kg CH₄ ha⁻¹ day⁻¹, in continuous flooding rice cultivation [55]. A major source of methane emissions is the decomposition of fertilizers and crop residues in flooded rice cultivation. The most effective option to reduce these emissions would be to prevent submergence of rice fields and to cultivate upland rice or other upland crops (<http://ciesin.org/TG/AG/riceprod.html>). Following approaches should be introduced to the field level [56], so as get controlled release of the CH₄ to the farmers for sustainable rice production and mitigating greenhouse gas emissions such as

1. Direct seeded rice represents an economically attractive option for the farmers to reduce CH₄ production along-with reducing overall production costs, but care should be taken for selecting fields with heavy textured soils [13].
2. Practicing alternate wetting and drying in rice fields reduces the CH₄ production along with saving a significant portion of irrigation water, which could be then used for other purposes viz. industrial etc.
3. Poultry manure and urea application reported to reduce the CH₄ production to the atmosphere
4. Paddy straw compost reported to be effective in reducing the CH₄ production than that of the fresh organic matter.
5. Use of the gypsum (as an amendment) and sulphate containing fertilizers in N, P and K deficient soils, reduces the CH₄ production due to the inhibitory effects of SO₄⁻² ions.

4.7 Biochar

Biochar is fairly an pioneering term but not a new element. Naturally, through grassland and forest fires all over the world, its deposited found [57,58]. However, biochar is also created from firewood or farm wastes under limited or no oxygen environment [59] and the process is known as pyrolysis where the biomass is heated to temperatures typically between 300°C and 700°C under anaerobic conditions. Although, the term biochar has come into a new common practice while the use of charcoal for improving soil health as fertility management goes back millennia [60]. In Punjab, India “Paralichar” is recommended for use in fields for proper use of paddy residues [61] Hence, biochar is usually made in an eco-friendly way by recycling plant waste into fertilizer [62,63,64] also mitigating climate change and finally, management of agricultural and forestry wastes, enhancement of soil sustainability, and generation of energy [65].

6. DISCUSSIONS

Global warming is real and its adverse effects viz. higher temperature and CO₂ levels adversely affecting the biosphere including crops, animals and finally humans. Mainly anthropogenic activities viz. intensive tillage, burning of crop residues, shifting of dietary habits, wastage of food etc. intensifies its adverse effects [66,67,68]. To produce enough food for burgeoning global population, fertilizer N consumption in 2017 had increased by 9.13 times since 1960 [71] because of reduced recovery efficiency of N-fertilizers from 80% in 1960 to 30% in 2000 in cereals [72] Further, misused or overuse of fertilizers reported as a major source polluting soil, water, and air [73,74,75]. Many agricultural strategies had already been suggested for sequestering the C back into the soil viz. minimum or zero tillage [67,68], use of crop residues as mulch on soil surface or as biochar/compost in the soil instead of burning, forestation etc. [76,77,78]. However, developing new plant cultivars will help a lot [76,78,79] which further mitigating the adverse effects of the global warming on the biosphere.

7. CONCLUSIONS AND FUTURE PLANS/POLICIES

Global warming is a reality. Raised CO₂ fixation may build crop development and yield because of expanded photosynthesis, diminished photorespiration, and diminished stomatal conductance. Further, enhanced CO₂ concentration might improve the soil N and P availability because of higher mineralization and phosphatase enzyme activity in the plant root area. On other hand, global warming might reduce the land productivity of rice and wheat because of the shorter length of harvest development. Different approaches viz. timely transplanting, short duration cultivars, forestation, use of residues as mulch on the soil or as biochar in the soil instead of burning, use of gypsum or polycoated fertilizers, new crop cultivars, minimum tillage operations instead of intensive tillage operations, double zero tillage, split application of the fertilizers, change in feeding habits, reduction in food wastage etc. are some of the recommended techniques to reduce the impact of global warming on agriculture. Further, it is recommended that different agricultural disciplines viz. plant reproducers, soil scientists, crop physiologists, agrometeorologists, and agronomists need to work in collaboration to find some integrated approach to reduce global warming effects and that too varied as per texturally divergent soils and under different agro-climatic conditions. Further, policy makers must provide some financial encouragements to the individuals practicing climate smart agricultural techniques. Further, different awards/incentives might be constituted by state government/NGOs/universities for farmers, who practice smart agricultural technologies to mitigate the adverse effects of the global warming.

COMPETING INTERESTS

Authors have declared that no competing interests exist.

REFERENCES

1. Hossain A, Sabagh AEL, Barutcular C, Bhatt R, Çig F , Seydoşoğlu S, Turan N, Konuskan O, Iqbal MA, Abdelhamid M, Soler CMT, Laing AM, Saneoka H. Sustainable crop

production to ensuring food security under climate change: A Mediterranean perspective. *Australian J Crop Sci.* 2020; 14(03):439-446

2. Chauhan BS, Kaur P, Mahajan G, Randhawa RK, Singh H, Kang MS, Global Warming and its Possible Impact on Agriculture in India. *Adva Agron.* 2013;. 123: 65-121.
3. World Meteorological Organization, 1992. *International Meteorological Vocabulary*. Second ed., WMO, Geneva, Switzerland.
4. IPCC. 2007. *Climate Change 2007: Mitigation. Contribution of Working Group III to the Fourth Assessment Report of the Intergovernmental Panel on Climate Change*. Cambridge: Cambridge University Press.
5. Alexandratos N, Bruinsma J. *World agriculture towards 2030/2050, the 2012 revision*. 2012; (ESA Working paper No. 12-03). Rome, Italy: Food and Agriculture Organization of the United Nations.
6. Witt C, Cassman KG, Olk DC, Biker U, Liboon SP, Samson MI, Ottow JCG. Crop rotation and residue management effects on carbon sequestration, nitrogen cycling and productivity of irrigated rice systems. *Plant Soil.* 2000; 225: 263–278.
7. Bhatt R, Arora S. Impact of tillage on soil bio-chemical properties, water storage and environment. *Journal of Soil and Water Conservation.* 2015; 14(3): 278-282.
8. Zhou W, Lv TF, Chen Y, Westby AP, Ren WJ. Soil physicochemical and biological properties of paddy-upland rotation: a review. *Sci. World J.* 2014: 856352.
9. Alam MK, Bell RW, Haque ME, Kader MA. Minimal soil disturbance and increased residue retention increase soil carbon in rice-based cropping systems on the Eastern Gangetic Plain. *Soil Till Res.* 2018; 183: 28–41
10. Alam MK, Biswas WK, Bell RW. Greenhouse gas implications of novel and conventional rice production technologies in the Eastern-Gangetic plains. *J. Clean. Prod.* 2016a; 112: 3977–3987.
11. Haque ME, Bell RW, Islam MA, Rahman MA. Minimum tillage unpuddled transplanting: an alternative crop establishment strategy for rice in conservation agriculture cropping systems. *Field Crops Res.* 2016; 185: 31–39.
12. Powlson DS, Stirling CM, Thierfelder C, White RP, Jat ML. Does conservation agriculture deliver climate change mitigation through soil carbon sequestration in tropical agro-ecosystems? *Agriculture. Ecosyst. Environ.* 2016; 220: 164–174.
13. Bhatt R, Kukal SS. Direct seeded rice in South Asia. In: Eric Lichtfouse (ed.) *Sustaina Agri Reviews*. 2015; 18: 217-252
14. Farman J, Gardiner B, Shanklin J. Large losses of total ozone in Antarctica reveal seasonal ClO_x/NO_x interaction”, *Nature.* 1985: 315: 207-210

15. Kang MS, Banga SS. 2013. Global agriculture and climate change: a perspective. In: Kang, M.S., Banga, S.S. (Eds.), *Combating Climate Change: An Agricultural Perspective*. CRC Press, Boca Raton, FL, 2013: 11–25.
16. Killman W. Foreword. In: *Climate Change and Food Security: A Framework Document*. FAO of the United Nations, Rome, p. iii. 2008
17. Kumar SN, Aggarwal PK, Rani S, Jain S, Saxena R, Chauhan N. Impact of climate change on crop productivity in Western Ghats, coastal and north eastern regions of India. *Curr. Sci.* 2011; 101: 332–341.
18. Sinha SK, Swaminathan MS. Deforestation, climate change and sustainable nutrition security: a case study of India. *Climate Change*. 1991; 19: 201–209.
19. Dar WD, Gowda CLL. Declining agricultural productivity and global food security. In: Kang, M.S., Banga, S.S. (Eds.), *Combating Climate Change: An Agricultural Perspective*. CRC Press, Boca Raton, FL. 2013; pp. 1–10.
20. Parry ML, Rosenzweig C, Iglesias A, Livermore M, Fischer G. Effects of climate change on global food production under SRES emissions and socio-economic scenarios. *Glob. Environ. Chang.* 2004; 14: 53–67.
21. IPCC. Contribution of working groups I, II, and III to the fourth assessment report of the intergovernmental panel on climate change. In: Pachauri, R.K., Reisinger, A. (Eds.), *Climate Change 2007a: Synthesis Report*. IPCC, Geneva, Switzerland.
22. Rosenzweig C, Parry ML. Potential impact of climate change on world food supply. *Nature*. 1994; 367: 133–138.
23. Kumar SN, Aggarwal PK, Rani S, Jain S, Saxena R, Chauhan N. Impact of climate change on crop productivity in Western Ghats, coastal and north eastern regions of India. *Curr. Sci.* 2011; 101: 332–341.
24. Hasket JD, Pachepsky YA, Acock B. Increase of CO₂ and climate change effects on Iowa soybean yield, stimulated using GLYSIM. *Agron. J.* 1997; 89: 167–176.
25. Farquhar GD. Carbon dioxide and vegetation. *Science*. 1997; 278: 1411.
26. Lal M, Singh KK, Srinivasan G, Rathore LS, Naidu D, Tripathi CN. Growth and yield response of soybean in Madhya Pradesh, India to climatic variability and change. *Agr. Forest. Meteorol.* 1998; 89: 101–114.
27. Hundal SS, Kaur P. Climatic variability and its impact on cereal productivity in Indian Punjab. *Curr. Sci.* 2007; 92: 506–512.
28. Pandey V, Patel HR, Patel VJ. Impact assessment of climate change on wheat yield in Gujarat using CERES-wheat model. *J. Agrometeorol.* 2007; 9: 149–157.

29. Hundal SS, Kaur P. Climatic change and its impacts on crop productivity in Punjab, India. In: Abrol, Y.P., Gadgil, S., Pant, G.B. (Eds.), *Climatic Variability and Agriculture*. Narosa Publishing House, New Delhi, India. 1996. pp. 377–393.
30. De Costa WAJM, Weerakoon WMW, Herath HMLK, Amaratunga KSP, Abeywardena RMI. Physiology of yield determination of rice under elevated carbon dioxide at high temperatures in a subhumid tropical climate. *Field Crop. Res.* 2006; 96: 336–347.
31. Reddy KR, Koti S, Davidonis GH, Reddy VR. Interactive effects of carbon dioxide and nitrogen nutrition on cotton growth, development, yield, and fiber quality. *Agron. J.* 2004; 96: 1148–1157.
32. Kaur P, Hundal SS. Effect of possible futuristic climate change scenarios on productivity of some kharif and rabi crops in the central agroclimatic zone of Punjab. *J. Agric. Phys.* 2006; 6: 21–27.
33. Aggarwal PK, Kalra N. Analyzing the limitations set by climatic factors, genotype and water and nitrogen availability on productivity of wheat II. Climatically potential yields and management strategies. *Field Crop. Res.* 1994; 38: 93–103.
34. Kaur P, Hundal SS. Global climate change vis-a`-vis crop productivity. In: Jha, M.K., Jha, M.K. (Eds.), *Natural and Anthropogenic Disasters: Vulnerability, Preparedness and Mitigation*. Capital Publishing Company and Springer, New Delhi and The Netherlands, 2010; 413–431.
35. Peng S, Huang J, Sheehy JE, Laza RC, Visperas RM, Zhong X, Centeno GS, Khush GS, Cassman KG. Rice yields decline with higher night temperature from global warming. *Proc. Natl. Acad. Sci.* 2004; 101: 9971–9975.
36. Krishnan P, Swain DK, Bhaskar BC, Nayak SK, Dash RN. Impact of elevated CO₂ and temperature on rice yield and methods of adaptation as evaluated by crop simulation studies. *Agr. Ecosyst. Environ.* 2007; 122: 233–242.
37. Mahajan G, Bharaj TS, Timsina J. Yield and water productivity of rice as affected by time of transplanting in Punjab, India. *Agric. Water Manage.* 2009a; 96: 525–535.
38. Gupta R, Gopal R, Jat ML, Jat RK, Sidhu HS, Minhas PS, Malik RK, Gupta R, Gopal R, Jat ML, Jat RK, Sidhu HS, Minhas PS, Malik RK. Wheat productivity in Indo-Gangetic plains of India during 2010: terminal heat effects and mitigation strategies. *PACA Newsletter*. 2010.
39. Saini J, Bhatt R. Climate smart agricultural technologies in rice-wheat water stressed regions of Punjab, India- A review. *J Applied Natural Sci.* 2019; 11(3): 698 -703.
40. Bhatt R, Kukal SS. Tillage and establishment method impacts on land and irrigation water productivity of wheat-rice system in North-west India. *Experi Agri.* 2017; 53(2): 178-201.

41. Bhatt R. Zero tillage impacts on soil environment and properties. *J Environ Agri Sci.* 2017; 10: 01-19.
42. Bhatt R, Arora S, Busari MA. Zero tillage for sustaining land and water productivity in northern India. *J Soil Water Conserv.* 2017; 16(3): 228-233.
43. Bhatt R, Kukal SS. Delineating soil moisture dynamics as affected by tillage in wheat, rice and establishment methods during intervening period. *J Applied Natural Sci.* 2015a; 7(1): 364-368
44. Bhatt R, Kukal SS. Soil moisture dynamics during intervening period in rice-wheat sequence as affected by different tillage methods at Ludhiana, Punjab, India. *Soil Environ.* 2015b; 34 (1): 82-88.
45. Bhatt R, Khara KL. Effect of tillage and mode of straw mulch application on soil erosion losses in the sub-montaneous tract of Punjab, India. *Soil Till Res.* 2006; 88: 107- 115.
46. Busari MA, Kukal SS, Amanpreet Kaur, Bhatt R, Dulazi AA. Conservation tillage impacts on soil, crop and the environment. *Inter Soil Water Conser Res.* 2015; 3: 119-129..
47. Arora S, Hadda MS, Bhatt R. In-situ soil moisture conservation for improving maize yields through participatory micro-watershed approach in foothills of Shivaliks. IN International conference on “Conservation farming system and watershed management in rainfed areas” at NewDelhi. 2008; Pp57-62.
48. Parfitt J, Barthel M, Macnaughton S. Food waste within food supply chains: quantification and potential for change to 2050. *Philos Trans Royal Society B: Bio Sci.* 2020; 365: 3065–3081.
49. Gaihre YK, Wassmann R, Pangga GV. Impact of elevated temperatures on greenhouse gas emissions in rice systems: Interaction with straw incorporation studied in a growth chamber experiment. *Plant Soil.* 2013; 373: 857-875.
50. Pittelkow C, Borbe MAA, Hill JE, Six J, Kessel CV, Linquist BA. Yield-scaled global warming potential of annual nitrous oxide and methane emissions from continuously flooded rice in response to nitrogen input. *Agric. Ecosyst. Environ.* 2013; 177: 10-20.
51. Matthews E, Fung I, Lerner J. Methane emission from rice cultivation: Geographic and seasonal distribution of cultivated areas and emissions. *Glob. Biogeochem. Cycl.* 1991; 5: 3-24.
52. Mitra S, Jain MC, Kumar S, Bandyopadhyay SK, Kalra N. Effect of rice cultivars on methane emission. *Agric. Ecosyst. Environ.* 1999; 73: 177-183.
53. Van Groenigen JW, Velthof GL, Oenema O, Van Groenigen KJ, Van Kessel C. Towards an agronomic assessment of N₂O emissions: a case study for arable crops. *European Journal of Soil Science.* 2010; 61: 903–913.

54. Banker BC, Kludze HK, Alford DP, DeLaune RD, Lindau CW. Methane sources and sinks in paddy rice soils: Relationship to emissions. *Agric. Ecosyst. Environ.* 1995; 53(3): 243–251.
55. IPCC Agriculture, forestry and other land use. In: 2006 IPCC Guidelines for National Greenhouse Gas Inventories, Prepared by the National Greenhouse Gas Inventories Programme, (eds Eggleston HS, Buendia L, Miwa K, Ngara T, Tanabe K), pp. 11.1–11.54. Institute for Global Environmental Strategies, Hayama, Japan.
56. Aulakh MS, Wassmann R, Rennenberg H. Methane emissions from rice fields – quantification, role of management, and mitigation options. *Advan Agron.* 2001; 70: 193–260.
57. Krull E, Lehmann J, Skjemstad J, Baldock J, Spouncer L. The global extent of black C in soils: is it everywhere. *Grasslands: Ecology, Management and Restoration*. Nova Science Publishers, Inc. 2008; 13-17.
58. Skjemstad JO, Reicosky DC, Wilts AR, McGowan JA. Charcoal carbon in US agricultural soils. *Soil Sci Soc America J.* 2002; 66(4): 1249-1255.
59. Magnusson A. Improving small-scale agriculture and countering deforestation: the case of biochar and biochar producing stoves in Embu County, Kenya. 2015.
60. Scholz SB, Sembres T, Roberts K, Whitman T, Wilson K, Lehmann J. Biochar systems for smallholders in developing countries: leveraging current knowledge and exploring future potential for climate-smart agriculture. 2014; The World Bank.
61. PAU. The Package of Practices for the Crops of Punjab Kharif 2020. Half yearly package published by Punjab Agricultural University, Ludhiana, Punjab, India
62. Cui Z. 498 Research Paper: A Review of Biochar's Applications in the Soil Nitrogen Cycle. 2015; New Mexico State University.
63. McLaughlin H, Anderson PS, Shields FE, Reed TB. All biochars are not created equal, and how to tell them apart. 2009; In Proceedings, North American Biochar Conference, Boulder, Colorado: 1-36.
64. Lehmann J. Biological carbon sequestration must and can be win-win approaches. *Climatic Change.* 2009; 97: 459–463.
65. Lehmann J, Joseph S. Biochar for environmental management: an introduction. 2009; pp. 1–12. In J. Lehmann and S. Joseph (eds.), *Biochar for Environmental Management: Science and Technology*. Earthscan Publ., London.
66. Bhatt R, Hossain A, Singh P. Scientific interventions to improve land and water productivity for climate smart agriculture in South-Asia. *Agronomic crops.* 2020; 2: 499-558. <https://doi.org/10.1007/978-981-32-9783-8>

67. Bhatt R, Hossain A, Hasanuzzaman M. Adaptation Strategies to Mitigate the Evapotranspiration for Sustainable Crop Production: A Perspective of Rice-Wheat Cropping System. *Agronomic crops*. 2020; 2: 559-582. <https://doi.org/10.1007/978-981-32-9783-8>
68. Bhatt R, Arora S. Tillage and mulching options for conserving soil and water and improving livelihoods in foothills of lower Shiwaliks. *J. Soil Water Conser.* 2019; 18 (3): 230-234.
69. IFA., 2019. International Fertilizer Association, Paris (France). IFASTAT, <https://www.ifastat.org/databases/plant-nutrition>
70. Russenes AL, Korsæth A, Bakken LR, Dorsch P. Effects of nitrogen split application on seasonal N₂O emissions in South East Norway. *Nutrient Cycling in Agroecosystems* 2019; 115:41-56.
71. Fowler D., Coyle M, Skiba U, Sutton MA, Cape JN, Reis S, Sheppard LJ. The global nitrogen cycle in the twenty-first century. *Philos Trans Royal Soc B* 368 (1621). 2013; doi:10.1098/rstb.2013.0164.
72. Neubauer SC, Mezonigal JP. Moving beyond global warming potentials to quantify the climatic role of ecosystems. *Ecosystems*. 2015; 18: 1000-1013. <https://doi.org/10.1007/s10021-015-9879-4>.
73. IPCC. Climate change: synthesis report. In: Pachauri, R.K., Meyer, L.A. (Eds.), *Contribution of Working Groups I, II and III to the Fifth Assessment Report of the Intergovernmental Panel on Climate Change Core Writing Team*. IPCC, Geneva, Switzerland. 2014; 151.
74. Hossain A, Bhatt R. Intervention of climate smart technologies for improving water productivity in an enormous water use rice-wheat system of South-Asia. *International letters of Natural Sci.* 2019; **75**: 27-35. DOI:10.18052/www.scipress.com/ILNS.75.27
75. Saini J, Bhatt R. Climate smart agricultural technologies in rice-wheat water stressed regions of Punjab, India- A review. *J. Applied Natural Sci.* 2019; 11(3): 698 -703. <https://doi.org/10.31018/jans.v11i3.2149>
76. Bhatt R, Kaur R, Gosh A. Strategies to practice climate smart agriculture to improve the livelihoods under rice-wheat systems in South Asia. "Sustainable Soil and Environmental Management" 2019; 29-72. https://doi.org/10.1007/978-981-13-8832-3_2
77. Bhatt R. Zero Tillage for Mitigating Global Warming Consequences and Improving Livelihoods in South Asia. *IN Environmental Sustainability and Climate Change Adaptation Strategies*. 2016; 126-161. DOI: 10.4018/978-1-5225-1607-1.ch005 ISBN10: 1522516077. Editors [Wayne Ganpat](#) (The University of the West Indies, Trinidad and Tobago) and [Wendy-Ann Isaac](#) (The University of the West Indies, Trinidad and Tobago).

78. Sanghera GS, Kashyap L, Anuradha, Kumar R, Bhatt R, Singh H. Genetic variability studies in sugarcane (*Saccharum* sp. Hybrid Complex) under water stress and non-stress conditions. Intern J Genetics. 2018; 10(5): 425-433.
79. Sanghera GS, Bhatt, R. Water Stress Response of Sugarcane (*Saccharum* spp.) Clones/Varieties for Sugar Yield and Components Traits. J. Agri. Res. 2018; 9 (3): 488-494.