

REVIEW ARTICLE

ROLE OF GUT MICROBIOME ON METABOLIC DISORDERS

Abstract

Numerous reviews on gut microbiome and metabolic disorders have been published so far.

Microbiome that reside in the human gut are key contributors to host metabolism and are considered potential sources of novel therapeutics in metabolic disorders. This review discusses the role of gut microbiome in the pathogenesis of obesity, type 1 diabetes mellitus (T1DM), type 2 diabetes mellitus (T2DM), Chronic kidney disease and cardiovascular disease. The establishment of gut microbiome is dependent on the type of birth. With effect from this point, Gut microbiome remains quite stable, although changes take place between birth and adulthood due to external influences, such as diet, disease and environment. Understanding these changes is important to predict diseases and develop therapies. Gut microbiome converts high fibres intake into short-chain fatty acids like butyrate, propionate and acetate which normalize intestinal permeability and alter de novo lipogenesis and gluconeogenesis through reduction of free fatty acid production by visceral adipose tissue. This effect contributes to reduce food intake and to improve glucose metabolism. Propionate can also bind to G protein coupled receptors (GPR)-43 expressed on lymphocytes in order to maintain appropriate immune defence. Butyrate activates peroxisome proliferator-activated receptor- γ (PPAR- γ) leading to beta-oxidation and oxygen consumption, a phenomenon contributing to maintain anaerobic condition in the gut lumen. In contrast, diets most especially western diet consisting among others of high fat and high salt content has been reported to cause gut dysbiosis. This alteration of gut microbiome producing obesity and insulin resistance through chronic bacterial translocation due to increased intestinal permeability that can drive a systemic inflammation leading to macrophage influx into visceral adipose tissue, activation of hepatic kuffer cells and insulin resistance in type 2 diabetes. This effect contributes to lower mucus thickness, decrease butyrate and propionate producing bacteria, L-cells secrete less gut peptides, lack of PPAR- γ activation lead to higher oxygen available for the microbiome at the proximity of the mucosa and increases the proliferation of *Enterobacteriaceae* with commensurate increase in opportunistic pathogens and also, early exposure to personal hygiene and insufficient breast feeding during childhood result to decrease in propionate which contribute to the lower abundance of specific T cells (mucosal-associated invariant T cells (MAIT) and regulatory T-cell (Treg) in the lamina propria of the gut leading to immature gut microbiome and predispose to type 1 diabetes in childhood.

Key words: Gut microbiome, obesity, diabetes, Chronic kidney diseases, cardiovascular diseases

Comment [H1]: Based on the details of the write-up, is this supposed to be microbiome or microbiota? Kindly confirm.

Comment [H2]: Remove

Comment [H3]: Adjust abstract to meet the journal's required number of

Formatted: Tab stops: 5.1", Left

1. Introduction

Gut dysbiosis contributes to the development of various diseases including cardiovascular disease (CVD) [1], obesity[2], type 2 diabetes mellitus [3;4], non-alcoholic fatty liver disease[5;6] , and even some types of cancer [7; 8]. Both animal and human studies have demonstrated that diet can influence the composition and function of the gut microbiome [9].

However, Other factors, including genetics; the mode of delivery at birth; the method of infant feeding; and the use of medications, especially antibiotics, also contribute to the composition and function of the gut microbiome [10].

Diet plays an important role in obesity, in addition to other factors [11; 12]. Obesity is a predisposing element of the metabolic syndrome in the development of type 2 diabetes mellitus (T2 DM). Obesity is a major risk factor for type 2 diabetes which accounts for 90–95% of all diabetes cases [13].

Dysbiosis is a state in which the homeostasis of the gut microbiome is disrupted, often leading to health problems. One of the causes of dysbiosis is diet, and studies have shown that diet may change the gut microbiome and contribute to obesity and diabetes [14]. Over 80% of patients with T2D in the Western world are overweight (REF). Obesity and T2D are characterized by an altered gut microbiome, inflammation, and gut barrier disruption [15;16]. Diabetes mellitus is a group of metabolic disorders of carbohydrate metabolism in which glucose is underutilized, producing hyperglycemia and has become a major public health concern [17]. It is caused either by inadequate production of insulin, or the body's improper response to insulin, or both [17].

There are two major types of diabetes: types 1 and 2 diabetes. Diabetes mellitus type 2 (DM2) accounts for 90% of all diabetes cases worldwide [18]. It is closely related to unhealthy lifestyles, overweight and physical inactivity. Unhealthy diet, lack of exercise, and other unhealthy lifestyle habits are associated with the development of diabetes [18]. Type 1 diabetes (T1D) is characterized by the autoimmune destruction of pancreatic beta cells. The rapid rise in T1D incidence during the past 50 years suggests environmental factors contribute to the disease [19]. Type 2 diabetes (T2D) is a complex metabolic disorder in which islet beta cell failure occurs together with insulin resistance where the body becomes resistant to the insulin it produces and combination of genetic and environmental factors contributes to the development of these diseases [20]. T1D is caused by ~~the~~ autoimmune destruction of the beta cells of the pancreas, ~~and representing~~ approximately 10% of all cases ~~of with~~ diabetes. At present, lifelong insulin therapy is the only treatment for the disease [19]. ~~Without exogenous insulin injections, individuals with T1D will not survive.~~ Although the prevalence of T1D is <1% in most populations, the geographic variation in incidence is enormous, ranging from <1/100,000 per year in China to approximately 40/100,000 per year in Finland [21]. It has been estimated that approximately 20 million people worldwide, mostly children and young adults, have T1D [22]. Based on best fit models, heritability was 46%, and environmental effect accounted for 53% of the liability for type2 diabetes in Finland- [23]. The incidence of T1D is increasing worldwide at a rate of about 3% per year [24]. Epidemiologic studies have revealed no significant gender differences in incidence among individuals diagnosed before age 15 [25]. There is also a notable seasonal variation in the incidence of T1D in many countries, with lower rates in the warm summer months, and higher rates during the cold winter [26].

Comment [H4]: Remove. This is redundant, already stated below

Comment [H5]: Worldwide???

Comment [H6]: Restructure

Diabetes can cause many complications if left untreated, including cardiovascular disease, stroke, and kidney failure [27]. The International Diabetes Federation reports that the world has 415 million adults with diabetes and 318 million people at risk of developing diabetes [28]. According to the WHO standard, Nigeria has a comparative prevalence of 4.83% with over 88,681 Diabetes-related deaths (REF). In South Eastern Nigeria the prevalence of diabetes mellitus is about 6.7% [29]. This review will focus on the following fields: Microbiome composition and role of microbiome on diabetes, pathophysiology and evolving therapeutic strategies in the 3 disorders; Obesity as a prequel to type 2 diabetes (sometimes referred to as “diabesity”); type 2 diabetes and type 1 diabetes (T1 DM).

Comment [H7]: Restructure the aim

2. Factors influencing the development of the microbiome

There are different factors influencing the development of the microbiome in the early years of life, starting with the mode of birth [30], breastfeeding or formula-feeding infants, and possibly the introduction of solid food [31]. The intestinal microbiome stabilizes about 3 years after birth, when it resembles the adult microbiome and stays relatively stable over time [32]. In adulthood, the microbiome can be altered by changes in diet [33], as well as by the use of several types of medication such as antibiotics [34], metformin [35], and even proton pump inhibitors[36].

2.1.Method of Birth

~~According to the Center Disease Control(CDC), as of 2014, 32.2% of all deliveries in the United States are performed by cesarean section [37].~~ The composition of the gut bacterial community is different in infants delivered by cesarean section from that of infants born by vaginal delivery [38; 39]. Infants born by vaginal delivery are exposed to the mother's bacteria at birth, which influences the infant's gut bacteria and stimulates white blood cells and other components of the immune system [40]. In 2014, the Center for Disease Control (CDC) reported that 32.2% of all

deliveries in the United States were performed by cesarean section [37]. Several studies have suggested- that infants born by cesarean section are at greater risk of developing obesity and/or diabetes than those born vaginally [41; 42; 43]. A similar study in a small- Similarly, a cohort study in 672 preschool children who were born by cesarean section-also showed ~~that the~~ prevalence rates of overweight and obesity were 15.6% and 12.9%; for overweight and obesity respectively, ~~-in 672 preschool children who were born by cesarean section-~~ [42]. However, opposite findings were also reported [44].

2.2. Infant feeding

Infant feeding is another important factor for establishing the bacterial community in the gut, because the mother's milk is not sterile [45]. Human breast milk has been recognized as a source of commensal and potential probiotic bacteria that influence the development of infant gut bacteria [46]. Human breast milk has been reported to contains >700 species of bacteria [47]. Although, human milk bacterial communities are generally complex and vary individually, the median bacterial load is $\sim 10^6$ bacterial cells/mL through time [48]. It appears that *Streptococci* and *Staphylococci* are predominant bacterial genera in human milk [45]; both of these are also predominant in the skin microbiome. Therefore, human milk may also contain some skin bacteria. However, *Weissella*, *Leuconostoc*, *Staphylococcus*, *Streptococcus*, and *Lactococcus* are predominant in colostrum samples of infants, whereas in milk taken at 1 and 6 months, *Veillonella*, *Leptotrichia*, and *Prevotella* increased significantly [46]. Evidence suggests that the transfer of microbiota from mothers to their infants affect infant growth and development [49;50]. Milk from obese mothers also showed more proinflammatory properties [50]. In addition, breast milk from mothers who underwent cesarean section contained bacteria that was different from milk samples from mothers who had vaginal deliveries [47]. The bacteria present

in breast milk, as well as those on the mother's skin, are among the first microbes to enter the infant's body, and they could play an important role in health [47]. Breast milk is also a rich source of IgA antibodies against different pathogens [51; 52]. The Borsh-Johnsen *et al.*, [53], also postulated that the lack of immunologic protection from insufficient breast-feeding may increase risk for T1D later during childhood. Breast milk contains growth factors, cytokines, and other substances necessary for the maturation of the intestinal mucosa [54]. Breast-feeding also protects against enteric infections during infancy, and promotes proper colonization of the gut. Interestingly, enteroviral infections can also interfere with gut immunoregulation, which may explain the epidemiologic associations between viral infections and T1D [54].

2.3. Infections

Enteroviruses especially Cocksackie virus B (CVB) infections are frequent during childhood and are known to have systemic effects on the pancreas [55]. Recent prospective studies are helping to elucidate the role of viruses to the etiology of T1D. For example, enteroviral infections occurring as early as *in utero* appear to increase a child's subsequent risk of developing type 1 diabetes mellitus [55]. Although the gut microbiome affects viral and bacterial infections, the reverse is also true [56; 57;58]. A human study of *Clostridium difficile* patients and asymptomatic carriers with the use of 16S ribosomal RNA gene pyrosequencing found that both had reduced microbial richness and diversity compared with healthy subjects [59; 60]. *C. difficile* infection is a typical result of severe dysbiosis in the gut microbiome [61; 62]. Interestingly, transplantation of the gut microbiome from healthy donors to infected patients increased microbial richness and diversity, and it is currently applied clinically [63;64].

2.4. Medications.

Comment [H8]: Is this still on the development of microbiome???

Increasing evidence suggests that many non antibiotic drugs have an impact on the gut microbiome [65], including the drugs used to treat T2D. Likewise, the gut microbiome also affects the efficacy of drugs [66]. Broad-spectrum antibiotics reduce bacterial diversity while increasing the abundance of ~~some bacteria that can be used by~~ opportunistic pathogens and decreasing the number of beneficial bacteria [67]. The use of broad-spectrum antibiotics, such as clindamycin, in infants and young children has been found to have the longest-lasting effects on the composition of the gut microbiome [68]. Early antibiotic exposure in neonates can lead to microbial dysbiosis, which may be a predisposing factor to inflammatory bowel disease [69]. Studies in both mice and humans have found that the use of antibiotics early in life could promote obesity later in life, mediated by the alteration of the gut microbiome [70].

Metformin is routinely used ~~in the to help with~~ control of hyperglycemia in T2D. The drug increases the insulin sensitivity of body cells, especially fat cells, muscle cells, and hepatocytes, ~~while preventing. Metformin also prevents~~ the overproduction of glucose by hepatocytes (REF). ~~Furthermore, metformin delays glucose absorption during digestion after a meal.~~ Interestingly, recent studies have found that the administration of metformin alters the composition of the microbiome [71].

Comment [H9]: 2014 recent

2.5. Diet

~~The role that food-ingested bacteria play in the gut microbiome had been underestimated in the past, possibly because of methodologic limitations that have been overcome in recent years [72].~~

Comment [H10]: Explain in clearer sentence

~~Numerous studies, both in research mice and in humans, have shown that high calorie diets contribute to obesity and T2D [73]. However, increasing evidence suggests that the link between diet and obesity lies in the gut microbiota [73]. Interventional studies~~

Comment [H11]: This is redundant

~~There are reliable evidence to~~ show that dietary changes result in substantial and rapid changes in the make-up of

the gut microbiome [74]. Studies in mice have demonstrated that a high-fat diet (60% fat) decreases the number of bacterial species (α diversity) in the gut microbiome, and the composition of the gut microbiome between mice given a high-fat diet (unpurified) and those given a regular unpurified diet is very different (β diversity) (REF). One study in mice found that the abundance of *A. muciniphila* decreased in obese mice and those with type 2 diabetes and that prebiotic feeding of *A. muciniphila* normalized its abundance and improved metabolic profiles [16]. Treatment with *A. muciniphila* also reduced fat mass, inflammation, and insulin resistance induced by a high-fat diet [16]. A fiber-rich diet has been shown to be beneficial to health because it modulates the gut microbiome [74]. ~~Studies in humans by 16S ribosomal RNA sequencing have characterized the human gut microbiota into different enterotypes distinguished by the types of bacteria present [75].~~ Enterotypes were strongly associated with long-term diets, particularly those with protein and animal fat. Wu *et al.* [14], showed that protein and animal fat were associated with *Bacteroides*, whereas carbohydrates were associated with *Prevotella*.

Comment [H12]: Reconstruct

2.6. Obesity

The major environmental risk factors for T2D are obesity ($\geq 120\%$ ideal body weight or a body mass index $\geq 30 \text{ kg/m}^2$) and a sedentary lifestyle [76]. Thus, the tremendous increase in the rates of T2D in recent years has been attributed, primarily, to the dramatic rise in obesity worldwide [76]. It has been estimated that approximately 80% of all new T2D cases are due to obesity [77]. ~~This is true for adults and children.~~ In the Pima Indians, 85% of the T2D children were either overweight or obese. Another study in the US reported that IGT was detected in 25% of obese children age 4-10 years, and in 21% of obese adolescents [78]. Undiagnosed T2D was detected in 4% of the adolescents. In addition to general obesity, the distribution of body fat, estimated by the ratio of waist-to-hip circumference (WHR), also has an impact on T2D risk. WHR is a

Comment [H13]: Meaning?

Comment [H14]: Remove, or explain undiagnosed with reference

reflection of abdominal (central) obesity, which is more strongly associated with T2D than the standard measures of obesity, such as those based on body mass index (REF). The other major T2D risk factor is physical inactivity. In addition to controlling weight, exercise improves glucose and lipid metabolism, which decreases T2D risk. Physical activity, such as daily walking or cycling for more than 30 minutes, has been shown to significantly reduce the risk of T2D [79]. Recently, intervention studies in China [80], Finland [81] and the US (Diabetes Prevention Program Study Group, 2002) have shown that lifestyle interventions targeting diet and exercise decreased the risk of progression from IGT to T2D by approximately 60%. In contrast, oral hypoglycemic medication only reduced the risk of progression by about 30%. There is also considerable evidence suggesting that the intrauterine environment is an important predictor of T2D risk [82].

2.7. Behavior

The role of hygiene in the etiology of T1D is also currently being explored [83]. It has also been hypothesized that delayed exposure to microorganisms due to improvements in standard of living hinders the development of the immune system, such that it is more likely to respond inappropriately when introduced to such agents at older (compared to younger) ages [83]. This explanation is consistent with recent reports indicating that factors such as day care attendance [84], sharing a bedroom with a sibling, and contact with pets are protective against T1D [83].

3.1. The Role of Gut Microbiome in immunity

B cells are involved in humoral and cell-mediated immunity. They secrete antibodies following differentiation into plasma cells, produce cytokines, and regulate T cell responses via antigen presentation and costimulation [85]. The humoral immune response in the gastrointestinal tract is mediated by IgA memory B cells and IgA-producing plasma cells in the gut-associated lymphoid

Comment [H15]: You are discussing obesity and T2D. Is this still about development of microbiota? If not, remove. Let the contents reflect the subtopic

Comment [H16]: Same as 2.6.

tissue (GALT). The protective and— nutrient-rich environment of the gastrointestinal tract accommodates an extremely dense and diverse bacterial community that in turn provides metabolic advantages and serves as a natural defense against colonization with pathogens [86]. Gut microbiome act as critical stimuli, playing an important role for the maturation of the GALT and further induce IgA production by B cells [86]. Class switching to IgA-producing plasma cells occurs in the Peyer’s patches and lamina propria, following T cell-dependent or -independent mechanisms [87]. The secret~~ory~~^{ed} IgA (SIgA) in~~to~~^{the} gut provides a first-line defense against pathogens mainly by blocking toxins and pathogens from adhering to the intestinal epithelium at the earliest steps of the infection process [88]. The studies of Endesfelder *et al.*, [89], suggest that an increased availability of butyrate and propionate in the intestinal tract—~~(depending on breastfeeding and nutrition)~~ have protective effects against the development of T1 DM related autoimmunity.

Several studies reported that the more prevalent *Bacteroidetes* species in the microbiome in countries like Finland and Russia have higher susceptibility to autoimmune disease produce a type of LPS with immunoinhibitory properties[90; 91].

Formatted: Highlight

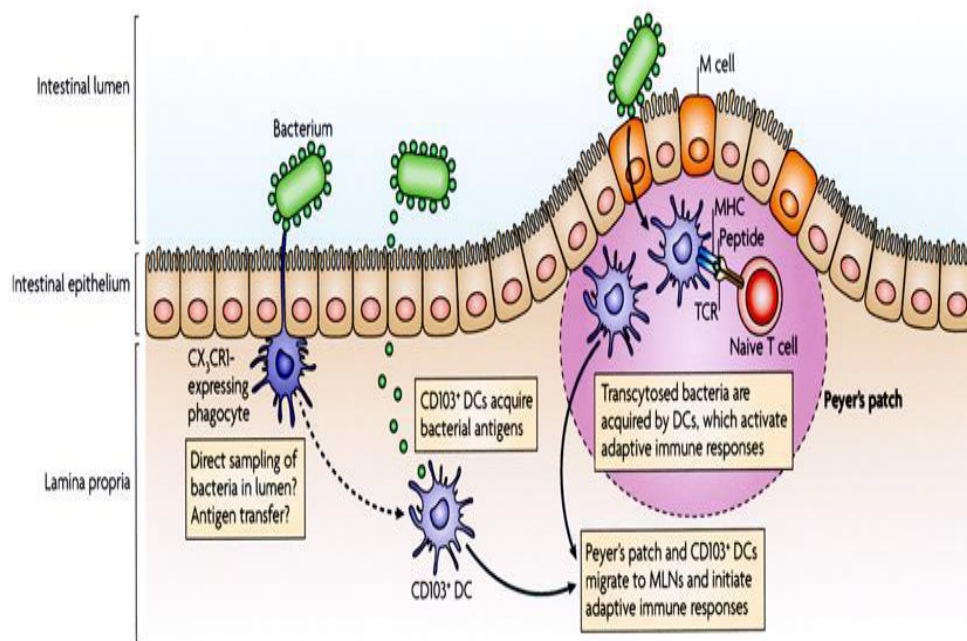
Comment [H17]: Reconstruct for better understanding

This may somewhat antagonize the higher immunostimulatory properties of LPS and their Lipid A subunit produced by the *E. coli* strains (REF). The phenomenon may preclude an early “immune education” and contribute to the development of autoimmune disease [92]. Mucin synthesis and Butyrate may play a major role in the prevention of autoimmune disease. Brown *et al.*, [93], hypothesized that a consortium of lactate- and butyrate-producing bacteria in a healthy gut may induce sufficient mucin synthesis to maintain gut integrity. In contrast, non-butyrate-producing lactate-utilizing bacteria prevent optimal mucin synthesis, as identified in autoimmune subjects [94].

3.2.The Role of Gut Microbiome in Diabetes Mellitus Type 1

Autoantibodies can originate from autoreactive B cells that escape immune tolerance mechanisms following molecular mimicry of infectious antigens with autoantigens, bystander activation, novel autoantigen presentation, or recognition of circulating autoantigens due to decrease of lactate and butyrate producing bacteria that protect gut permeability and maturation of B-cells [95] (figure 1). They can clear target cells via antibody-dependent cell-mediated cytotoxicity or complement activation [95]. The authors speculate that the correlation of certain bacterial findings with the number of positive autoantibodies could indicate a role of gut dysbiosis as a regulator of β -cell autoimmunity in the progression of the autoimmune process towards clinical disease like diabetes mellitus type 1 [96].

Comment [H18]: The content does not explain the heading 3.



Petta *et al.*, [95]

Figure 1: Role of Gut microbiome in autoimmune and T1DM.

Comment [H19]: How does this figure explain 3.2.? If it is 3.1, then there is no proper description before presenting the figure

3.3. ~~The Role of~~ Gut Microbiome in Diabetes Mellitus Type 2 and obesity

Short-chain fatty acids (SCFAs) such as butyrate may protect against diet-induced insulin resistance. ~~This can occur~~ through the engagement of Gpr43 and 41 and the release of glucagon-like peptide 1 (GLP-1), an incretin hormone that can improve insulin secretion and resistance as well as preserve beta-cell function [97]. ~~The main location of GLP-1 secreting cells is the distal ileum and colon and, interestingly, rectal but not intravenous infusions of SCFAs in humans stimulates an abrupt increase in GLP-1 secretion [97].~~

In contrast to the cases of gut dysbiosis, LPS are absorbed by enterocytes and they are conveyed into plasma coupled to chylomicrons [97]. In this way, dietary fats can be associated with increased absorption of LPS which in turn can be related with changes in the gut microbiome distinguished by a decrease in the *Eubacterium rectale*–*C. coccoides* group, Gram-negative *Bacteroides* and in *Bifidobacterium* [97].

This causal role of LPS was demonstrated by infusing LPS in mice with a normal diet inducing hepatic insulin resistance, glucose intolerance, and an increase in the weight of adipose tissue [98]. It has been recently shown that the LPS-induced signaling cascade via Toll-like receptor 4 (TLR4) impairs pancreatic β -cell function via suppressed glucose-induced insulin secretion and decreased mRNA expression of pancreas-duodenum homebox-1 (PDX-1). LPS binds to the CD14/TLR4 receptor present on macrophages and produces an increase in the production of proinflammatory molecules. A rise in LPS levels has been observed in subjects who increased their fat intake [99; 100].

When LPS injections were administrated to mice with a genetic absence of the CD14/TLR4 receptor they did not develop these metabolic characteristics and there was no start of T2DM or obesity, showing the important role of LPS in the mechanism of CD14/TLR4 [101]. Moreover,

knockout CD14/TLR4 mice were even more sensitive to insulin than wild type controls [101]. LPS can also promote the expression of NF- κ B (nuclear factor kappa-light-chain-enhancer of activated B cells) and activation of the MAPK (mitogen-activated protein kinase) pathway in adipocytes with several target genes [102]. Karlsson *et al.*, [103], reported that an increase in the abundance of four *Lactobacillus* species and decreases in the abundance of five *Clostridium* species in Diabetes mellitus type2.

Comment [H20]: What is the significance of this statement?

Metagenomic data have revealed that patients with type 2 diabetes exhibit a moderate degree of gut microbial dysbiosis compared with patients with inflammatory bowel disease [104]. The proportions of the phylum *Firmicutes* and the class *Clostridia* are significantly reduced, whereas the class of the gram-negative *Betaproteobacteria* is highly enriched in the faeces of type 2 diabetic patients compared with non-diabetic individuals, and the proportion of *Betaproteobacteria* is positively correlated with plasma glucose levels [105]. Interestingly, the microbiome of type 2 diabetic patients are characterised by the depletion of several butyrate-producing bacteria, including *Clostridium* species, *Eubacterium rectale*, *Faecalibacterium prausnitzii*, *Roseburia intestinalis* and *Roseburia inulinivorans* [104;103], and an enrichment of opportunistic pathogens [104].

Bacteria increased in the gut of type 2 diabetic patients also include the sulphate-reducing bacteria *Desulfovibrio*, as well as *Lactobacillus gasseri*, *Lactobacillus reuteri* and *Lactobacillus plantarum* [103]. In accordance with these findings, an increasing number of observational studies have reported changes in the gut microbiome associated with type2 diabetes, but the outcomes are not always concordant (REF). Although, diets most especially western diet consisting among others of high fat and high salt content has been reported to cause gut dysbiosis [106]. This alteration of gut microbiome producing obesity and insulin resistance through

chronic bacterial translocation due to increased intestinal permeability that can drive a systemic inflammation leading to macrophage influx into visceral adipose tissue, activation of hepatic kuffer cells and insulin resistance [106] (figure 2).

UNDER PEER REVIEW

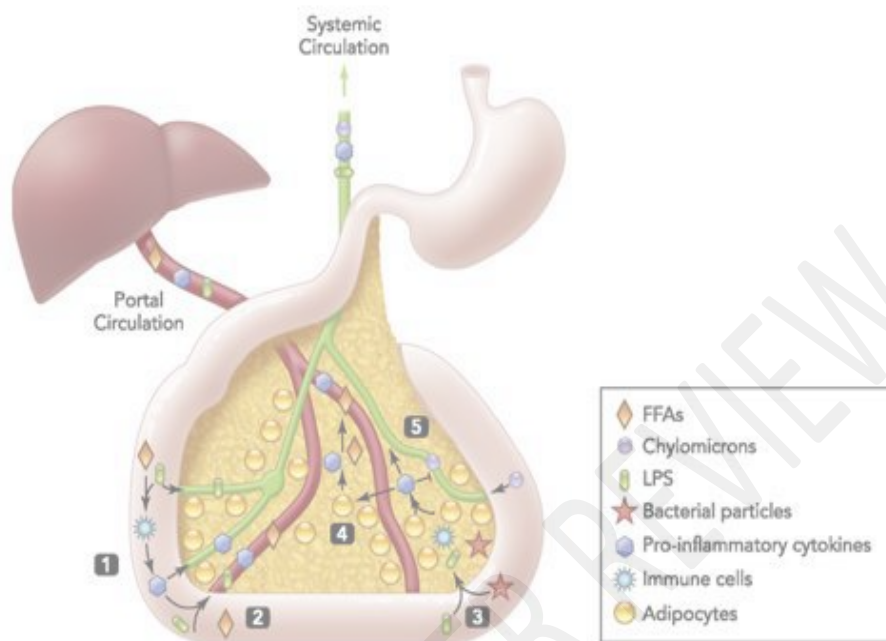


Figure2: Bacterial products, changes in adipose tissue lead to insulin resistance and decrease insulin release [106]

Keys:

- (1) ↑ fat and sugar (Western) diet → ↑ bacterial release of lipopolysaccharide (LPS)
- (2) LPS → inflammatory cytokines into portal system
- (3) ↑ translocation of bacteria and LPS into visceral adipose tissue, ↑ inflammatory cytokines
- (4) Adipocytes release free fatty acids (FFA)
- (5) Reduced clearance of inflammatory mediators from visceral adipose tissue
- (6) ↑ LPS, FFA, and cytokines into portal circulation ↓ liver metabolism and insulin sensitivity
- (7) ↑ delivery of LPS, FFA, cytokines into systemic circulation negatively affect B-cell and systemic insulin sensitivity

4. The Gut Microbiome in Cardiometabolism

Inflammation is commonly involved in a number of diseases [105], including atherosclerosis, which is a classical chronic inflammatory disease [106]. Gut epithelium is the first barrier of the host, which protects against the invasion of pathogens [107]. Given its critical role in preventing the translocation of intestinal content, mainly bacterial components, the integrity of the gut barrier is essential for maintaining the health of the host. Intestinal permeability is associated with reduced expression of tight junction proteins, including zonula occludens-1 (ZO-1), claudin-1, and occludin, and an imbalance between intestinal epithelial cell death and regeneration [108; 109]. If the intestinal epithelial barrier is impaired, the invasion of pathogen associated molecular patterns (PAMPs) drives an immune response and results in systemic and tissue-specific inflammation. Accordingly, impairments to the gut barrier integrity induced by gut dysbiosis have been suggested as risk factor for chronic inflammation in various diseases. It is noteworthy that lipopolysaccharide (LPS) and peptidoglycan are microbial components that are recognized as risk factors for CVD. Lipopolysaccharide is a cell wall component of Gram-negative [G (-)] bacteria, which has been extensively studied as it is one of the PAMPs involved in CVD risk (REF). The association between LPS and CVD was first proposed in 1999 by measuring plasma endotoxin levels in the clinic (REF). Subsequently, the relationship was gradually confirmed by multiple experiments by different research groups [110]. For example, in one study, it was concluded that the level of circulating endotoxemia was most notable in patients with the highest CVD burden [98], found that gut dysbiosis suppressed the expression of tight junction proteins, leading to an increase in intestinal permeability and subsequently the translocation of LPS into the blood [111]. Gut dysbiosis-derived LPS may play important roles by modulation of Toll-like receptors (TLRs) and their downstream targets [112]. As part of the

Comment [H21]: By who?

Comment [H22]: Different groups with one ref???

pattern-recognition receptors family, TLRs can recognize bacterial products and modulate the host immune system [113]. Circulating LPS can bind to cell-surface-receptor complexes composed of TLR4 and its co-receptors cluster of differentiation 14 (CD14) [114]. Consistently, clinical investigations have revealed that upregulation of TLRs was associated with inflammatory activation in human atherosclerosis, and promoted the development of atherosclerosis [115]. Moreover, the binding of LPS to TLR4 activated its downstream pathways including MYD88 and nuclear factor kappa B (NF- κ B), contributing to the increased production of pro-inflammatory cytokines such as IL-6, IL-1, IL-27, and tumor necrosis factor-alpha (TNF- α), leading to an increased risk of developing CVD, showed that a deficiency of MyD88 reduced atherosclerosis by decreasing macrophage recruitment (REF). ~~First, the microbiome alters rapidly when exposed to great and fast changes in diet.~~ Short-term dietary changes such as switching between plant- and meat-based diets, or adding more than 30 grams of fiber per day to the diet, or following a diet with a different fat/fiber content can change the human gut microbiome, ~~it's in~~ function and composition significantly in 48 hours(REF). Fiber-enriched diets have been shown to improve insulin resistance in lean and in obese subjects with diabetes [116]. However, only long-term dietary habits are most important in actually shaping the composition of the gut microbiome. ~~Short term dietary interventions failed to change the major features and classification of the microbiome [14]. Another aspect to consider is the high interpersonal variance in the effect of changed diets on the gut flora, thus mirroring the individualized nature of our gut microbiome.~~

Comment [H23]: Break into two sentences for better meaning

In multiple human studies, elevated trimethylamine-N-oxide (TMAO) has been independently associated with prevalent CVD and incident risks for Myocardial Infarction, stroke, death, and revascularization(REF). Choline is an essential dietary nutrient. While it can synthesize much of

Comment [H24]: Multiple without any ref???

its requirements, there is still need to consume some choline in the diet or else develop a deficiency state, which is characterized by fatty liver, altered one-carbon methyl donor metabolic pathways, and neurologic disorder [117].

Comment [H25]: While what? Kindly remove

An obligatory role for gut microbiome in both trimethylamine (TMA) and TMAO formation from ingested PC was confirmed in animal model studies, which included germ-free mice [118], as well as human clinical investigations involving ingestion of egg yolk, isotope-labeled PC, and a cocktail of oral antibiotics [103]. Recently, the association between acute egg yolk ingestion and increased plasma and urine TMAO concentrations was independently confirmed in humans [56]. The conversion from TMA to TMAO requires an oxidation step that is mediated by host enzyme machinery in the form of flavin monooxygenases (FMOs) [119; 120; 121]. Gut microbe-produced TMA reaches the liver rapidly via the portal circulation, where a cluster of hepatic FMO enzymes efficiently oxidizes TMA into TMAO (figure3). Previous studies have shown that subjects with a genetic defect in FMO3 can have markedly elevated TMA levels, leading to a noxious body odor that characterizes the condition (fish odor syndrome or trimethylaminuria [TMAU]) [122].

Comment [H26]: Write in full

Comment [H27]: Write in full

Comment [H28]: How does this discuss 4.0???

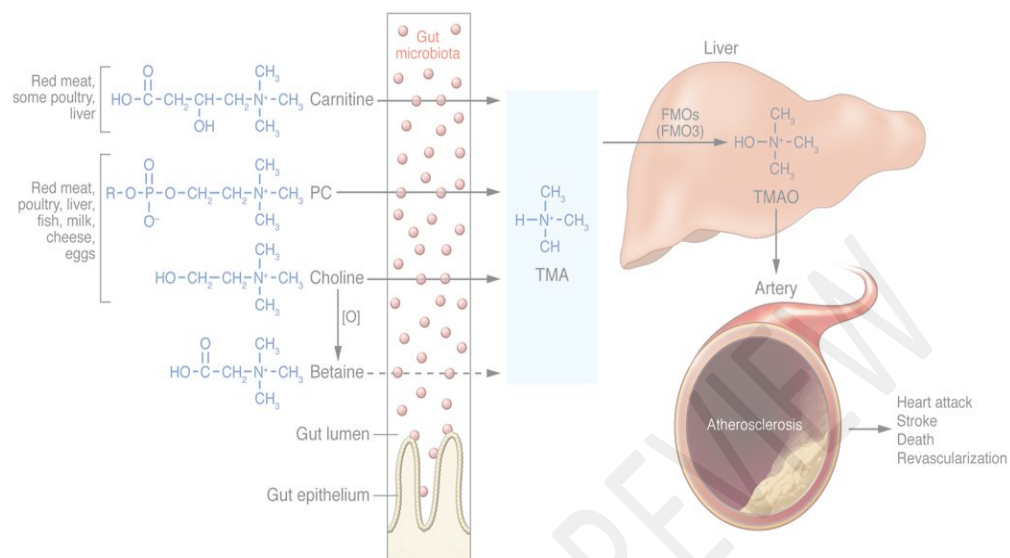


Figure 3: Nutrient/meta-organismal pathway associated with atherosclerosis and major adverse cardiovascular events [123].

5. Gut microbiome in Chronic kidney disease (CKD)

Gut microbiome produce compounds that are normally excreted by the kidneys but can be considered as potential uremic retention molecules (URM) such as mammalian metabolism, microbial products and diet [124; 125]. The principal role of the colon is to absorb salt and water and to provide a mechanism for orderly disposal of waste products of digestion. Moreover, the colon is responsible for salvage of energy and possibly nitrogen from carbohydrates and proteins that are not digested in the upper gastrointestinal tract. This is achieved through the metabolism of anaerobic bacteria, a process known as fermentation [124]. Fermentation of the amino acids tyrosine (obtained usually from consuming ~~turkey,~~ chicken, beef, brown rice, nuts, ~~fish,~~ ~~milk,~~ ~~eggs,~~ ~~cheese,~~ fruit, and vegetables) and tryptophan (e.g., from beef, ~~poultry,~~ ~~pork,~~ fish, milk, yogurt, ~~eggs,~~ ~~cheese,~~ and soy products) by intestinal microbiome generates p-cresol and indole respectively(REF). After absorption, these compounds are further metabolized in the liver to generate p-cresyl sulfate and p-indoxyl sulfate. Indoxyl sulfate and p-cresyl sulfate circulate in equilibrium between a free solute fraction and a fraction bound to serum proteins. The best characterized binding site is albumin, for which indoxyl sulfate and p-cresyl sulfate are competitive binding inhibitors [126]. These toxins are eliminated mainly by tubular secretion in the kidneys and, therefore, are considered to be uremic toxins, with increased levels indicative of renal impairment and advancing CKD [127] (figure 4).

Dysbiosis in CKD patients may contribute to increased uremic toxin levels that in turn contribute to CKD progression. In a ~~prospective, observational~~ study of 268 patients with CKD, Wu *et al.*, ~~and colleagues~~ found the baseline concentration of indoxyl sulfate to be predictive of CKD progression [14]. Meijers *et al.*, ~~and colleagues~~ measured p-cresol levels in 499 patients with mild-to-moderate CKD and showed that p-cresol sulfate levels increased with decreasing

Formatted: Font: Italic

Formatted: Font: Italic

estimated glomerular filtration rate (GFR) [128]. Likewise, an elevated p-cresol concentration was associated with increased risk of death in end-stage renal disease (ESRD) patients treated with maintenance hemodialysis [129]. Trimethylamine N-oxide (TMAO) is another uremic toxin produced by the gut microbiome, and its role in CKD has also been reported [130].

CKD also affects the structure of the gut microbiome and contributes to dysbiosis due to decreased consumption of dietary fibers [131], frequent use of antibiotics [132], slow colonic transit, metabolic acidosis, volume overload with intestinal wall congestion, intestinal wall edema, and oral iron intake [133]. Urea is hydrolyzed by gut microbes, resulting in the formation of large quantities of ammonia, which affects the growth of commensal bacteria and causes imbalance in the gut microbiome [133].

In healthy individuals, gut microbiome are classified into different enterotypes based on the abundance of specific bacterial groups, which are dominated by *Bacteroides*, *Prevotella*, or *Ruminococcus* [75]; these enterotypes are strongly associated with long-term diets, particularly the levels of proteins and animal fat (*Bacteroides*) versus carbohydrates (*Prevotella*) [14]. However, the intestinal microbiome in patients with CKD is altered, with lower numbers of *Lactobacillaceae* and *Prevotellaceae* families (both are considered normal colonic microbiome) and 100 times higher *Enterobacteria* and *Enterococci* species (which are normally present in lower proportions) [134].

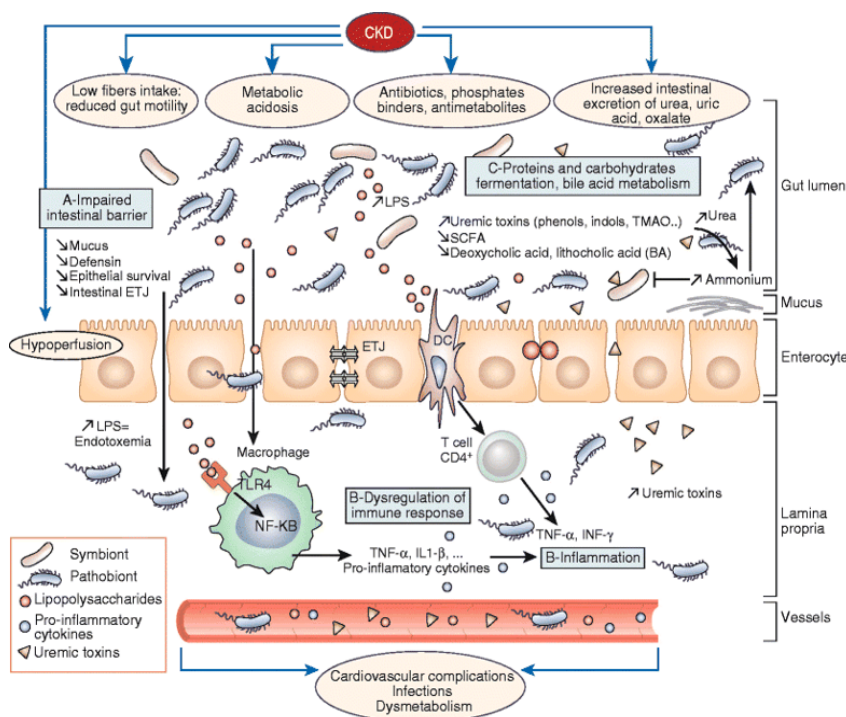


Figure 4: summarizes mechanisms and pathways of dysbiosis in diabetic patients with CKD (Koppe *et al.*, 2015).

Conclusion

Gut microbiome has recently been proposed as an environmental factor involved in the control of body weight and energy homeostasis. Numerous studies suggest that a high-fat diet can lead to gut microbiome dysbiosis, which contributes to increase in Gram negative (*Bacteroidetes*) and Gram positive ratio (*Firmicutes*). This in turn result to low-grade inflammation and insulin resistance and, ultimately, obesity, diabetes, and other metabolic disorders. This evidence supporting Brillat-Savarins' statement that says, "Tell me what you eat, and I will tell you what you are."

References

1. Emoto, T., Yamashita, T., Kobayashi, T., Sasaki, N., Hirota, Y and Hayashi, T. (2017). Characterization of gut microbiota profiles in coronary artery disease patients using data mining analysis of terminal restriction fragment length polymorphism: gut microbiota could be a diagnostic marker of coronary artery disease. *Heart Vessels*. 32:39–46.
2. Henao-Mejia, J., Elinav, E., Jin, C., Hao, L., Mehal, W. Z and Strowig, T (2012). Inflammasome-mediated dysbiosis regulates progression of NAFLD and obesity. *Nature* 482:179–185.
3. Khan, M. T., Nieuwdorp, M., and Backhed, F. (2014). Microbial modulation of insulin sensitivity. *Cell Metabolism* 20:753–760.
4. Pedersen, H. K., Gudmundsdottir, V., Nielsen, H. B., Hyotylainen, T., Nielsen, T., Jensen, B.A (2016). Human gut microbes impact host serum metabolome and insulin sensitivity. *Nature*. 535:376–381.
5. Mouzaki, M., Comelli, E. M., Arendt, B. M., Bonengel, J., Fung, S. K., Fischer, S (2013). Intestinal microbiota in patients with nonalcoholic fatty liver disease. *Hepatology*. 58: 120–127.
6. Zhu, L., Baker, S. S., Gill, C., Liu, W., Alkhouri, R., Baker, R. D. (2013). Characterization of gut microbiomes in nonalcoholic steatohepatitis (NASH) patients: a connection between endogenous alcohol and NASH. *Hepatology* 57, 601–609.
7. Gopalakrishnan, V., Helmink, B. A., Spencer, C. N., Reuben, A., and Wargo, J. A. (2018). The influence of the gut microbiome on cancer, immunity, and cancer immunotherapy. *Cancer Cell* 33, 570–580.
8. Tilg, H., Adolph, T. E., Gerner, R. R., and Moschen, A. R. (2018). The intestinal microbiota in colorectal cancer. *Cancer Cell* 33: 954–964.
9. Li, W and Andrew, D (2017). Factors Influencing the Gut Microbiota, Inflammation and Type 2 Diabetes, *The Journal of Nutrition*. 147 (7): 1468S–1475S.
10. Zhang, C., Yin, A., Li, H., Wang, R., Wu, G., Shen, J., Zhang, M., Wang, L., Hou, Y and Ouyang (2015). Dietary modulation of gut microbiota contributes to alleviation of both genetic and simple obesity in children. *Ebiomedicine*. 2:968–984
11. Rothe, M and Blaut, M (2013). Evolution of the gut microbiota and the influence of diet Benefit Microbes. 4:31–37.

Comment [H29]: 1. Kindly review to ensure all citations are references, and vice versa.
2. Follow the referencing style/format of the journal.

12. Compare, D., Rocco, A., Sanduzzi Zamparelli, M and Nardone, G (2016). The gut bacteria-driven obesity development. *Digestive Disease*. 34:221–229.
13. Vazquez G., Duval S., Jacobs D.R and Silventoinen, K (2007). Comparison of body mass index, waist circumference, and waist/hip ratio in predicting incident diabetes: A meta-analysis. *Epidemiology Review*. 115:2007–2029.
14. Wu, G.D., Chen, J., Hoffmann, C., Bittinger, K., Chen, Y.Y., Keilbaugh, S.A., Bewtra, M., Knights, D., Walters, W.A and Knight, R (2011). Linking long-term dietary patterns with gut microbial enterotypes. *Science*. 334:105–108.
15. Wander, P.L., Boyko, E.J., Leonetti, D.L., McNeely, M.J., Kahn, S.E and Fujimoto, W.Y (2013). Change in visceral adiposity independently predicts a greater risk of developing type 2 diabetes over 10 years in Japanese Americans. *Diabetes Care*. 36:289–293.
16. Everard, A., Belzer, C., Geurts, L., Ouwerkerk, J.P., Druart, C., Bindels, L.B., Guiot, Y., Derrien, M., Muccioli, G.G and Delzenne, N.M (2013). Cross-talk between Akkermansia muciniphila and intestinal epithelium controls diet-induced obesity. *Proceedure. Natural Academic Science USA*. 110:9066–9071.
17. Wang, T., Cai, G., Qiu, Y., Fei, N., Zhang, M and Pang, X (2017). Structural segregation of gut microbiota between colorectal cancer patients and healthy volunteers. *ISME Journal*. 6:320–329.
18. Sharma, R and Prajapati, P.K (2015). Rising risk of type 2 diabetes among inhabitants of Jamnagar, Gujarat: A cross-sectional survey. *An international Quarterly Journal of Research in Ayurveda* 36(1): 10–17.
19. Alexandra, P., Christopher, Y and Jayne, S. D (2017). The Influence of the Microbiome on Type 1 Diabetes. *Journal of Immunology*. 198: 590–595.
20. Tai, N., Wong, F.S and Wen, L (2015). The role of gut microbiota in the development of type 1, type 2 diabetes mellitus and obesity. *Revised Endocrine Metabolism Disorder*. 16(1):55–65.
21. Karovonen, M., Tuomilehto, J and Libman, I (1993). A review of the recent epidemiological data on the worldwide incidence of type 1 (insulin-dependent) diabetes mellitus. World Health Organization DiaMond Group. *Diabetologia*. 36: 883–892.
22. Holt, R.I.G (2004). Diagnosis, epidemiology and pathogenesis of diabetes mellitus: an update for psychiatrists. *British Journal Psychiatry*. 184: s55–s63.
23. Kaprio, J., Tuomilehto, J., Koskenvuo, M., Romanov, K., Eriksson, J and Stengard, J (1992). Concordance for type 1 (insulin-dependent) and Type non-insulin-dependent

- diabetes mellitus in a population based cohort of twice in Finland. *Diabetologia*. **35**:1060-1067.
24. Onkamo, P., Vaananen, S and Karvonen, M (1999). Worldwide increase in incidence of type 1 diabetes--the analysis of the data on published incidence trends. *Diabetologia*. **42**:1395-1403
 25. Kyvik, K.O., Nystrom, L and Gorus, F (2004). The epidemiology of type 1 diabetes mellitus is not the same in young adults as in children. *Diabetologia*, **47**:377-384.
 26. Dorman, J.S., LaPorte, R.E and Songer, T.J (2003). Epidemiology of Type 1 Diabetes, in Type 1 Diabetes: Etiology and Treatment, Mark A. Sperling. *Humana Press*. 3-22.
 27. Fox, C.S., Coady, S., Sorlie, P.D., Levy, D., Meigs, J.B., D'Agostino, R.B, S., Wilson, P. and Savage, P.J (2004) Trends in cardiovascular complications of diabetes. *JAMA*. **292**(20):2495–2499.
 28. Chatenoud, L (2015) World Diabetes Day: Perspectives on immunotherapy of Type 1 Diabetes. *European Journal of Immunology*. **45**(11): 2968–2970
 29. Osuji, C.U., Nzerem, B.A., Dioka, C.E., Meludu, S.C and Onwubuya, E.I (2012). Prevalence of diabetes mellitus in a group of women attending “August meeting” at Naze South East Nigeria. *Journal of diabetes mellitus*.
 30. Jakobsson, H.E., Abrahamsson, T.R., Jenmalm, M.C., Harris, K., Quince, C and Jernberg, (2014). Decreased gut microbiota diversity, delayed Bacteroidetes colonisation and reduced Th1 responses in infants delivered by caesarean section. *Gut*. (4):559–556
 31. Bokulich, N.A., Chung, J., Battaglia, T., Henderson, N., Jay, M and Li H (2016). Antibiotics, birth mode, and diet shape microbiome maturation during early life. *Science Translation Medicine*. **8**(343):343-382.
 32. Schloissnig, S., Arumugam, M., Sunagawa, S., Mitreva, M., Tap, J and Zhu, A (2013). Genomic variation landscape of the human gut microbiome. *Nature*. **493**(7430):45–50
 33. David, L.A., Maurice, C.F., Carmody, R.N., Gootenberg, D.B., Button, J.E and Wolfe, B.E (2014). Diet rapidly and reproducibly alters the human gut microbiome. *Nature*. **505**(7484):559–563.
 34. Falony, G (2016). Population-level analysis of gut microbiome variation. *Science*. **352**(6285):560–564.
 35. Wu, H., Esteve, E., Tremaroli, V., Khan, M.T., Caesar, R and Manneras-Holm, L (2017). Metformin alters the gut microbiome of individuals with treatment-naïve type 2 diabetes, contributing to the therapeutic effects of the drug. *Nature Medicine*. **23**(7):850–858.
 36. Freedberg, D.E., Toussaint, N.C., Chen, S.P., Ratner, A.J., Whittier, S and Wang, T.C

- (2015). Proton Pump Inhibitors Alter Specific Taxa in the Human Gastrointestinal Microbiome: A Crossover Trial. *Gastroenterology*. 149(4):883–885.
37. Centers for Disease Control (2017). Available from: www.cdc.gov/nchs/fastats/delivery.htm
 38. Dominguez-Bello, M.G., De Jesus-Laboy, K.M., Shen, N., Cox, L.M., Amir, A., Gonzalez, A., Bokulich, N.A., Song, S.J., Hoashi, M and Rivera-Vinas, J.I. (2016). Partial restoration of the microbiota of cesarean-born infants via vaginal microbial transfer *Natural Medicine*. 250–253.
 39. Tamburini, S., Shen, N., Wu, H.C and Clemente, J.C (2016). The microbiome in early life implications for health outcomes. *Natural Medicine*. 22:713–722.
 40. Kulas, T., Bursac, D., Zegarac, Z., Planinic-Rados, G and Hrgovic, Z (2013). New views on cesarean section, its possible complications and long-term consequences for children's health. *Medical Arch*. 67:460–463.
 41. Li, H., Ye, R., Pei, L., Ren, A., Zheng, X and Liu, J (2014). Cesarean delivery, cesarean delivery on maternal request and childhood overweight: a Chinese birth cohort study of 181 380 children. *Pediatric Obesity*. 9:10–16.
 42. Portela, D.S., Vieira, T.O., Matos, S.M., de Oliveira, N.F and Vieira, G.O (2015). Maternal obesity, environmental factors, cesarean delivery and breastfeeding as determinants of overweight and obesity in children: results from a cohort. *BMC Pregnancy Childbirth*. 15:94.
 43. Kuhle, S., Tong, O.S and Woolcott, C.G (2015). Association between cesarean section and childhood obesity: a systematic review and meta-analysis. *Obesity Review*. 16:295–303
 44. Pei, Z., Heinrich, J., Fuertes, E., Flexeder, C., Hoffmann, B., Lehmann, I., Schaaf, B., von Berg, A and Koletzko, S (2014). Influences of Lifestyle-Related Factors on the Immune System and the Development of Allergies in Childhood plus Air Pollution and Genetics (LISAplus) Study Group. Cesarean delivery and risk of childhood obesity. *Journal Pediatrics*. 164:1068–1073.
 45. Fitzstevens, J.L., Smith, K.C., Hagadorn, J.I., Caimano, M.J., Matson, A.P and Brownell, E.A (2016). Systematic review of the human milk microbiota. *Nutritional Clinical Practice*.
 46. Boix-Amorós, A., Collado, M.C and Mira, A (2016). Relationship between milk microbiota bacterial load, macronutrients, and human cells during lactation. *Frontier Microbiology*.:492.
 47. Cabrera-Rubio, R., Collado, M.C., Laitinen, K., Salminen, S., Isolauri, E and Mira, A (2012). The human milk microbiome changes over lactation and is shaped by maternal weight and mode of delivery. *American Journal Clinical Nutrition*. 96:544–551.
 48. Obermajer, T and Pogacic, T (2016). Commentary: relationship between milk microbiota,

- bacterial load, macronutrients, and human cells during lactation.*Frontier Microbiology*. 7:1281
49. Panagos,P., Matthan, N and Sen, S(2014). Effects of maternal obesity on breastmilk composition and infant growth.*FASEB Journal*.28 (1):247.
 50. Panagos,P.G., Vishwanathan,R., Penfield-Cyr, A., Matthan, N.R., Shivappa,N., Wirth, M.D., Hebert,J.R and Sen,S (2016).Breastmilk from obese mothers has pro-inflammatory properties and decreased neuroprotective factors.*Journal Perinatology*. 36:284 –290
 51. Hanson, L.A and Soderstrom, T(1981).Human milk: defense against infection. Progressive . *Clinical Biology Resources*.61:147–159.
 52. Hanson,L.A., Ahlstedt, S., Andersson, B., Cruz,J.R., Dahlgren,U., Fallstrom, S.P., Porras, O., Svanborg Eden,C., Soderstrom,T and Wettergren,B (1984).The immune response of theammary gland and its significance for the neonate.*Annual Allergy*. 53:576 –582
 53. Borch-Johnsen, K., Joner, G and Mandrup-Poulsen, T (1984). Relation between breast-feeding and incidence rates of insulin-dependent diabetes mellitus. A hypothesis. *Lancet*. 2:1083-1086.
 54. Kolb, H and Pozzilli, P (1999).Cow's milk and type 1 diabetes: the gut immune system deserves attention. *Immunology Today*. 20: 108-110.
 55. Dahlquist, G(1998). The aetiology of type 1 diabetes: an epidemiological perspective. *Acta Paediatrica*. 425: 5-10.
 56. Qin,N., Zheng,B., Yao,J., Guo, L., Zuo,J., Wu,L., Zhou, J., Liu, L., Guo, J and Ni,S(2015).Influence of H7N9 virus infection and associated treatment on human gut microbiota. *Science Rep*. 5:14771.
 57. Yang, L., Poles,M.A., Fisch,G.S., Ma,Y., Nossa,C., Phelan,J.A and Pei, Z(2016). HIV-induced immunosuppression is associated with colonization of the proximal gut by environmental bacteria. *AIDS*.30:19 – 29.
 58. Zilberman-Schapira,G., Zmora,N., Itav,S., Bashiardes, S., Elinav, H and Elinav,E(2016). The gut microbiome in human immunodeficiency virus infection.*BMC Medicine*. 14:83.
 59. Hoffmann,C., Hill,D.A., Minkah,N., Kirn,T., Troy,A., Artis,D and Bushman,F(2009). Community-wide response of the gut microbiota to enteropathogenic *Citrobacter rodentium* infection revealed by deep sequencing. *Infectious Immunology*. 77: 4668 –4678.
 60. Zhang,L., Dong, D., Jiang,C., Li,Z., Wang, X., and Peng, Y(2015).Insight into alteration of gut microbiota in Clostridium difficile infection and asymptomatic *C. difficile* colonization. *Anaerobe*.34:1–7.

61. Seekatz,A.M and Young,V.B (2014).*Clostridium difficile* and the microbiota.*Journal Clinical Investigation*.**124**:4182–4189.
62. Blanchi,J., Goret, J and Megraud,F (2016).Clostridium difficile infection: a model for disruption of the gut microbiota equilibrium. *Digestive Disease*. 34:217–220.
63. Youngster,I., Russell,G.H., Pindar,C., Ziv-Baran,T., Sauk,J and Hohmann,E.L(2014). Oral, capsulized, frozen fecal microbiota transplantation for relapsing *Clostridium difficile* infection.*JAMA*.312:1772–1778.
64. Bashan, A., Gibson, T.E., Friedman,J., Carey,V.J., Weiss,S.T., Hohmann, E.L and Liu,Y.Y(2016). Universality of human microbial dynamics. *Nature*. **534**:259–262.
65. Xu and Zhang,X(2015).Effects of cyclophosphamide on immune system and gut microbiota in mice.*Microbiology Resource*.171:97–106.
66. Yoo,D.H., Kim,I.S., Van Le,T.K., Jung, I.H., Yoo,H.H and Kim,D.H(2014).Gut microbiota-mediated drug interactions between lovastatin and antibiotics.*Drug Metabolism Dispos*.42:1508–1513.
67. Modi,S.R., Collins,J.J and Relman,D.A(2014).Antibiotics and the gut microbiota. *Journal Clinical Investigation*.124:4212–4218.
68. Cho,I., Yamanishi,S., Cox,L., Methé,B.A., Zavadil,J., Li, K., Gao,Z., Mahana,D., Raju, K and Teitler,I(2012).Antibiotics in early life alter the murine colonic microbiome and adiposity. *Nature*.488:621–486
69. Shaw,S.Y., Blanchard,J.F and Bernstein,C.N(2010).Association between the use of antibiotics the first year of life and pediatric inflammatory bowel disease.*American Journal Gastroenterology*.**105**:2687–2692.
70. Trasande,L., Blustein, J., Liu,M., Corwin,E., Cox,L.M and Blaser,M.J(2013).Infant antibiotic exposures and early-life body mass. *International Journal Obese* (London). **37**:16–23.
71. Lee,H and Ko,G(2014).Effect of metformin on metabolic improvement and gut microbiome. *Applied Environmental Microbiology*.80:5935–5943.
72. Chawla ,A., Repa, J.J., Evans, R.M and Mangelsdorf, D.J(2001). Nuclear Receptors and Lipid Physiology: Opening the X-Files. *Science*. 294(5548):1866–1870.
73. Sonnenburg, J.L and Backhed, F (2016).Diet-microbiota interactions as moderators of human metabolism. *Nature*. 535(**7610**):56–64.

74. Koh, A., De Vadder, F., Kovatcheva-Datchary, P and Backhed, F (2016). From dietary fiber to host physiology: short-chain fatty acids as key bacterial metabolites. *Cell*. **165**:1332-1345
75. Arumugam, M., Raes, J., Pelletier, E., Le Paslier, D., Yamada, T., Mende, D.R and Fermandeas (2011). Enterotypes of the human gut microbiome. *Nature* 473:174–180.
76. Zimmet, P., Alberti, K.G.M.M and Shaw, J (2001). Global and societal implication of the diabetes epidemic. *Nature*. 414: 782-787.
77. Lean, M.E (2000). Obesity: burdens of illness and strategies for prevention or management. *Drugs Today*. 36: 773-784.
78. Sinha, R., Fisch, G and Teague, B (2002). Prevalence of impaired glucose tolerance among children and adolescents with marked obesity. *New England Journal Medicine*. **346**: 802-810.
79. Hu, F.B (2003). Sedentary lifestyle and risk of obesity and type 2 diabetes. *Lipids*. **38**: 103-108.
80. Pan, X.R., Li, G.W and Hu, Y.H (1997). Effects of diet and exercise in preventing NIDDM in people with impaired glucose tolerance. The Da Qing IGT and Diabetes Study. *Diabetes Care*. **20**: 537-544
81. Tuomilehto, J., Lindstrom, J and Eriksson, J.G (2001). Prevention of type 2 diabetes mellitus by changes in lifestyle among subjects with impaired glucose tolerance. *New England Journal Medicine*. **344**: 1343-1350.
82. Sobngwi, E., Boudou, P and Mauvais-Jarvis, F (2003). Effect of a diabetic environment in utero on predisposition to type 2 diabetes. *Lancet*. **361**:1861-1865.
83. Marshall, A.L., Chetwynd, A and Morris, J (2004). Type 1 diabetes mellitus in childhood: matched case control study in Lancashire and Cumbria, UK. *Diabetes Medicine*. **21**: 1035-1040.
84. McIntyre, C. W., Harrison, L. E., Eldehni, M. T., Jefferies, H. J., Szeto, C. C and John, S. (2011). Circulating endotoxemia: a novel factor in systemic inflammation and cardiovascular disease in chronic kidney disease. *Clinical Journal American Society Nephrology*. **6**: 133–141.
85. Claes, N., Fraussen, J., Stinissen, P., Hupperts, R and Somers, V (2015). B cells are multifunctional players in multiple sclerosis pathogenesis: insights from therapeutic interventions. *Frontier Immunology*. **6**:642.

86. Round, J.L. and Mazmanian, S.K.(2009). The gut microbiota shapes intestinal immune responses during health and disease. *Nature Review Immunology*. 9(5):313–323
87. Suzuki, K., Ha, S.A., Tsuji, M and Fagarasan, S(2007). Intestinal IgA synthesis: a primitive form of adaptive immunity that regulates microbial communities in the gut. *Seminar Immunology* .19(2):127–135
88. Helander, A., Miller, C.L., Myers, K.S., Neutra, M.R., Nibert, M.L.(2004). Protective immunoglobulin A and G antibodies bind to overlapping intersubunit epitopes in the head domain of type 1 reovirus adhesin sigma1. *Journal Virology* (2004).78(19):10695–10705.
89. Endesfelder, D., Engel, M., Davis-Richardson, A.G., Ardisson, A.N., Achenbach ,P., Hummel, S., Winkler, C., Atkinson, M., Schatz, D and Triplett, E (2016) . Towards a functional hypothesis relating anti-islet cell autoimmunity to the dietary impact on microbial communities and butyrate production. *Microbiome*. 4:17.
90. Harsch, I.A and Konturck, P.C (2018). The role of Gut microbiota in obesity and Type 2 and Type 1 Diabetes Mellitus. New insights into “Old” Diseases. *Medical Science (Basel)*. 6(2):32.
91. Kim, H.M., Park, B.S., Kim, J.I., Kim, S.E., Lee, J., Oh, S.C., Enkhbayar, P., Matsushima, N., Lee H and Yoo, O.J (2007). Crystal structure of the TLR4-MD-2 complex with bound endotoxin antagonist Eritoran. *Cell*. 130:906–917
92. Burger-van Paassen, N., Vincent, A., Puiman, P.J., van der Sluis, M., Bouma, J., Boehm, G., van Goudoever, J.B., van Seuningen, I and Renes, I.B.(2009). The regulation of intestinal mucin MUC2 expression by short-chain fatty acids: Implications for epithelial protection. *Biochemistry Journal*.
93. Brown C.T., Davis-Richardson A.G., Giongo A., Gano K.A., Crabb D.B., Mukherjee N., Casella G., Drew J.C., Ilonen J and Knip M (2011). Gut microbiome metagenomics analysis suggests a functional model for the development of autoimmunity for type 1 diabetes. 6:e25792.
94. Bosi, E., Molteni, L., Radaelli, M.G., Folini L., Fermo, I., Bazzigaluppi E., Piemonti, L., Pastore, M.R and Paroni, R(2006). Increased intestinal permeability precedes clinical onset of type 1 diabetes. *Diabetologia*. 49:2824–2827
95. Petta ,I., Fraussen, J., Somers, V and Kleinewietfeld M (2018) Interrelation of Diet, Gut Microbiome, and Autoantibody Production. *Frontier Immunology* 9:439.

96. De Goffau, M.C., Luopajarvi, K., Knip, M., Ilonen, J., Ruohtula, T., Härkönen, T., Orivuori, L., ala, S., Welling, G.W., Harmsen, H.J (2013) Faecal microbiota composition differs between children with β -cell autoimmunity and those without. *Diabetes*. **62**:1238–1244.
97. Clemente Postigo, M., Queipo Ortuño, M. I., Murri, M., Boto Ordoñez, M., Pérez Martínez, P., and Andres Lacueva, C (2012).Endotoxin increase after fat overload is related to postprandial hypertriglyceridemia in morbidly obese patients. *Journal Lipid Resource*. 53: 973–978.
98. Cani, P. D., Amar, J., Iglesias, M. A., Poggi, M., Knauf, C., and Bastelica, D. (2007a). Metabolic endotoxemia initiates obesity and insulin resistance. *Diabetes*. 56:1761–1772.
99. Amar, J., Burcelin, R., Ruidavets, J., Cani, P., Fauvel, J and Alessi, M(2008). Energy intake is associated with endotoxemia in apparently healthy men. *American Journal Clinical Nutrition*. 87: 1219–1223
100. Manco, M., Putignani, L., and Bottazzo, G. F. (2010). Gut microbiota, lipopolysaccharides, and innate immunity in the pathogenesis of obesity and cardiovascular risk. *Endocrine.Revised*.31: 817–844.
101. Poggi, M., Bastelica, D., Gual, P., Iglesias, M. A., Gremeaux, T., Knauf, C(2007). C3H/HeJ mice carrying a Toll-like receptor 4 mutation are protected against the development of insulin resistance in white adipose tissue in response to a high-fat diet. *Diabetologia* **50**:1267–1276.
102. Chung, S., Lapoint, K., Martinez, K., Kennedy, A., Boysen Sandberg, M., and McIntosh, M. K. (2006). Preadipocytes mediate lipopolysaccharide-induced inflammation and insulin resistance in primary cultures of newly differentiated human adipocytes. *Endocrinology* 147:5340–5351.
103. Karlsson, F.H., Tremaroli, V., Nookaew, I., Bergstrom, G., Behre, C.J and Fagerberg B (2013). Gut metagenome in European women with normal, impaired and diabetic glucose control. *Nature*. 498(**7452**):99–103.
104. Qin, J., Li, Y., Cai, Z., Li, S., Zhu, J and Zhang, F(2012). A metagenome-wide association study of gut microbiota in type 2 diabetes. *Nature*. 490(7418):55–60
105. Larsen, N., Vogensen, F. K., van den Berg, F. W., Nielsen, D. S., Andreasen, A. S and Pedersen, B. K (2010). Gut microbiota in human adults with type 2 diabetes differs from non-diabetic adults. *PLoS ONE* 5:e9085.
106. Conrad, D and Weest, S(2014).Bacterial products, changes in adipose tissue lead to insulinresistance and decrease insulin release.*Physiology*.29:304.
107. Ding, S., Chi, M. M., Scull, B. P., Rigby, R., Schwerbrock, N. M. J and Magness, S (2010). High-fat diet: bacteria interactions promote intestinal inflammation which precedes and

correlates with obesity and insulin resistance in mouse.5:e12191.

108. Gui, T., Shimokado, A., Sun, Y., Akasaka, T., and Muragaki, Y (2012).erse roles of macrophages in atherosclerosis: from inflammatory biology to biomarker discovery. *Mediatation Inflammation*. 693083
109. Chen, W. Y., Wang, M., Zhang, J., Barve, S. S., McClain, C. J., and Joshi- Barve, S. (2017). Acrolein disrupts tight junction proteins and causes endoplasmic reticulum stress-mediated epithelial cell death eading to intestinal barrier dysfunction and permeability. *American Journal Pathology*. **187**:2686–2697
110. Mitra, S., Drautz-Moses, D. I., Alhede, M., Maw, M. T., Liu, Y and Purbojati, R. W (2015). In silico analyses of metagenomes from human atherosclerotic plaque samples. *Microbiome* 3:38
111. Harris, K., Kassis, A., Major, G., and Chou, C. J (2012). Is the gut microbiota a new factor contributing to obesity and its metabolic disorders? *Journal Obese*. 2:87-91
112. Chacon, M. R., Lozano-Bartolome, J., Portero-Otin, M., Rodriguez, M. M., Xifra, G and Puig, J (2017). The gut mycobiome composition is linked to carotid atherosclerosis. *Benefical Microbes*. 9: 14.
113. Akira, S., Uematsu, S., and Takeuchi, O (2006). Pathogen recognition and innate immunity. *Cell* 124:783–801.
144. Neves, A. L., Coelho, J., Couto, L and Leite-Moreira, A (2013). Metabolic endotoxemia: a molecular link between obesity and cardiovascular risk. *Journal Molecular Endocrinology*. 51:R51–R64.
115. Turnbaugh, P.J and Gordon, J.I (2009). The core gut microbiome, energy balance and obesity. *Journal Physiology* .587(17):4153– 4158
116. Robertson,M.D., Wright, J.W., Loizon, E., Debard, C., Vidal, H., Shojaee-Moradie, F(2012). Insulin-sensitizing effects on muscle and adipose tissue after dietary fiber intake in men and women with metabolic syndrome. *Journal Clinical Endocrinology Metabolism*.97(9):3326–332
117. Scheithauer, T.P., Dallinga-Thie, G.M., de Vos, W.M., Nieuwdorp, M and van Raalte, H(2016). Causality of small and large intestinal microbiota in weight regulation and insulin resistance. *Molecular Metabolism*. 5(9):759–770.
118. Link, A., Becker, V., Goel, A., Wex, T and Malfertheiner P (2012). Feasibility of fecal microRNAs as novel biomarkers for pancreatic cancer.*PLoS One*. (8):e42933
119. Zhernakova, A., Kurilshikov, A., Bonder, M.J., Tigchelaar, E.F., Schirmer, M and Vatanen T (2016) . Population-based metagenomics analysis reveals markers for gut microbiome composition and diversity.*Science*. 352(6285):565–569.

120. Gao, Z., Yin, J., Zhang, J., Ward, R.E., Martin, R.J and Lefevre, M(2009). Butyrate improves insulin sensitivity and increases energy expenditure in mice. *Diabetes*. 58(7):1509–1517.
121. Schwartz, A., Taras, D., Schafer, K., Beijer, S., Bos, N.A and Donus, C(2010). Microbiota and SCFA in lean and overweight healthy subjects. *Obesity* (Silver Spring). 18(1):190–195.
122. Griffin, N.W., Ahern, P.P., Cheng, J., Heath, A.C., Ilkayeva, O and Newgard, C.B (2017). Prior Dietary Practices and Connections to a Human Gut Microbial Metacommunity Alter Responses to Diet Interventions. *Cell Host Microbe*. 21(1):84–96.
123. Tang, W.H.W and Hazen, S.L(2014). The contributory role of gut microbiota in cardiovascular disease. *Journal of Clinical Investigation*. 124(10):4204–4211
124. Evenepoel, P., Meijers, B.K., Bammens, B.R. and Verbeke, K (2009). Uremic toxins originating from colonic microbial metabolism. *Kidney International*. 114:S12–19.
125. Wikoff, W.R., Anfora, A.T., Liu, J., Schultz, P.G., Lesley, S.A., Peters, E.C and Siuzdak, G (2009). Metabolomics analysis reveals large effects of gut microflora on mammalian blood metabolites. *Proceedings of the National Academy of Sciences U S A*. 106:3698–3707
126. Fukagawa, M and Watanabe, Y (2011). Role of uremic toxins and oxidative stress in chronic kidney disease. *Therapy Apher Dial* 15:119.
127. Poesen, R., Meijers, B and Evenepoel, P (2013) The Colon: An Overlooked Site for Therapeutics in Dialysis Patients. *Semin Dial* 26:323–332.
128. Meijers, B.K., Claes, K., Bammens, B., de Loor, H., Viaene, L., Verbeke, K., Kuypers, D., Vanrenterghem, Y and Evenepoel, P (2010) p-Cresol and cardiovascular risk in mild-to-moderate kidney disease. *Clinical Journal of the American Society of Nephrology*. 5:1182–1189.
129. Bammens, B., Evenepoel, P., Keuleers, H., Verbeke, K and Vanrenterghem, Y (2006). Free serum concentrations of the protein-bound retention solute p-cresol predict mortality in hemodialysis patients. *Kidney International*. 69:1081–1087.
130. Missailidis, C., Hallqvist, J., Qureshi, A.R., Barany, P., Heimbürger, O., Lindholm, B., Stenvinkel, P and Bergman, P (2016). Serum Trimethylamine-N-Oxide Is Strongly Related to Renal Function and Predicts Outcome in Chronic Kidney Disease. 11:141738.
131. Kalantar-Zadeh, K., Kopple, J.D, Deepak, S., Block, D and Block, G (2002). Food intake

characteristics of hemodialysis patients as obtained by food frequency questionnaire
Journal Renal Nutrition. **12**:17–31.

132. Jakobsson, H.E., Jernberg, C., Andersson, A.F., Sjolund-Karlsson, M., Jansson, J.K and Engstrand, L (2010) Short-Term Antibiotic Treatment Has Differing Long-Term Impacts on the Human Throat and Gut Microbiome. *5*: 9836

UNDER PEER REVIEW