

**COMPARATIVE EFFECTS OF CONVENTIONAL AND NON-CONVENTIONAL FLOCCULANTS AND
DISINFECTANTS ON MICROBIAL CONTAMINANTS IN WATER PURIFICATION**

Comments in this text are given by Dr Stig Morling and labelled in yellow pasting

Abstract

Bioflocculants are microorganism-produced special natural inorganic macromolecule substances that can flocculate suspended solids, cells and colloidal solids (Zaki *et al.*, 2011). Bioflocculant purified from *Bacillus subtilis* isolated from the sediments of Onyearugbulem market stream inhibited the growth of coliform for well, stream and abattoir waste water samples. On the other hand, alum sulfate when compared with bioflocculant at a dosage level of 200mg for well and stream waters and 800mg for abattoir waste water yielded flocculating activities of 87.33%, 78.42% and 24.60%. This indicates that purified bioflocculant was more effective than alum sulphate. Bioflocculant produced from *Bacillus subtilis* should be exploited in water treatment. *Moringa Oleifera* seed powder exhibited both flocculating and disinfecting potentials in water treatment but not effective in the treatment of abattoir waste water.

Key Words Bioflocculant, *Moringa oleifera* seed powder, flocculating, disinfecting **Comment1. Please add some more keywordss .**

Introduction

Forms by which water pollution can be accessed can be classified under three major headings: physical, chemical and biological methods. **Comment 2: Added the word "methods"** (Onda *et al.*, 2012).

This is characterized by the presence of objects and materials in water. These materials range from sediments/ particles to sticks. **Comment 3: Add "both particulate and dissolved impurities"**. This evidence of water pollution can be accessed by measuring its turbidity. **Comment 4: Turbidity is not enough to give a comprehensive characterization of a given polluted water status** Water intended for drinking should not contain any foreign body; it must be clear and colorless. Other uses of (such as agricultural and aesthetic purposes) water may permit the presence of certain materials (Chapman and WHO, 2006).

This is characterized by a change in the chemical composition of the water. Water is made up of two atoms of hydrogen and one atom of oxygen. When there is an addition or subtraction from the chemical composition of water, such water is not fit for consumption. The following can be used to access the chemical composition of water: composition of trace metals and radionuclides, hardness, total dissolved solids and total soluble solids. Water fit for drinking must be tasteless and odorless (Flury, 1996). **Comment 7: As both well water and wastewaters are addressed in the following, note that more variables are relevant for the definition of the wastewater, such as COD, Nitrogen compounds and phosphorus!**

This is characterized by the presence of microorganisms and organic materials that serve as nutrients for the growth these microorganisms. These microorganisms are bacteria, fungi, protozoan and algae. Any water that contains these microorganisms is not safe for drinking (Hellawell, 2012).

An abattoir can be defined as any premise used for or in connection with the slaughter of animals whose meat is intended for consumption (Girards, 2005). Waste waters from abattoirs are concentrated with source of oxygen consuming wastes. Abattoirs generally use large quantities of water for washing meat and cleaning process areas; they are usually located near large bodies of water for washing meat and processing (Nafarnda *et al.*, 2006).

Comment 5: Please mention here that an abbatoir effluent is normally very rich in nitrogen, normally found as organically bound nitrogen!

Flocculation is a stage in water purification which involves the gentle mixing of water. It brings about increase in particle size from sub-microscopic micro-floc to visible suspended particles. On the addition of inorganic polymers such as alum and poly-aluminum chloride, floc size continues to build with additional collisions and interaction. Flocculation is a physical and chemical process used for the removal of the visible sediments and material from water which makes it a colloidal solution. This can be achieved through agitation or by the addition of flocculating agents (Moghimipour *et al.*, 2014). Chemical flocculants include clarifying agents such as Iron (II) sulphate, Aluminium sulphate, and Iron (II) chloride in water treatment which results in the formation of colloids (Vasantharaj and Hemashenpagam, 2013).

Biofloculants are microorganism-produced special natural inorganic macromolecule substances that can flocculate suspended solids, cells and colloidal solids (Zaki *et al.*, 2011). Several microorganisms which secrete flocculation biopolymer have been screened and isolated from activated sludge, waste water, and soil (Zaki *et al.*, 2011). Species of microorganisms that have biofloculant producing characteristics include bacteria (such as *Bacteroidites*, *Bacillus* sp., *Bacillus muscilaginosus*, *Bacillus subtilis*) fungi, actinomyces and algae (*Chlamydomonas reinhardtii*, *Chlorella minutissima*) (Okaiyeto *et al.*, 2013). Biofloculants stands out among others as they have the advantage of innocuousness, biocompatibility, biodegradability and environmental friendliness, unlike organic and inorganic flocculants which are toxic and whose degradation intermediates are difficult to remove from the environment (Okaiyeto *et al.*, 2015). Besides, organic flocculants such as polyacry lamide and polyethylene imine derivatives have been implicated in adverse human health effects (Nwodo *et al.*, 2014). Conversely, the enormous advantages associated with biofloculants motivate its consideration as an alternative, hence the vast interest in the scientific and industrial community worldwide (Nwodo *et al.*, 2012).

Comment 6: As the study includes ground water (well water) for consuming by humans a reference to the WHO directives for potable water quality is imperative!

Chlorination is defined as a form of chemical treatment of water that involves the addition of chlorine (Cl₂) or hypochlorite to water. Chlorination plays a key role in wastewater treatment of water processes by removing pathogens and other physical and chemical impurities. The effects of chlorine in waste water treatment include: disinfection, controlling odor and septicity, aiding scum

and grease removal. Chlorination also help to control activated sludge bulking foaming. It stabilizes waste activated sludge prior to disposal, destroys cyanides, removes phenols and ammonia (Hussain *et al.*, 2002).

Comment 8: Please observe that the use of Cl_2 as an agent for bacteria elimination is abandoned due to the downstream risks! The formation of chloro-organic complex compounds has for a long time been seen as a potential threat!!

Description of study area

Onyearugbulem abattoir got its name from the market (modern) and office complexes to the north of abattoir built by Navy Captain Anthony Ibe Onyearugbulem (1955-2002) who served as the military administrator of Ondo State during the regime of General Sani Abacha. Onyearugbulem abattoir was selected as the study area because of its location in the large expanse of built up area comprising of low, medium and high income earners with residential buildings in the north by office complexes and west and east by private schools and ships. The abattoir is about 50 meters off the express (Ilesha-Owo) and covers about 1000m^2 land mass.

Comment 9: Please give more precise information on the site location: Country and town!

Materials and Methods

Separation and Purification of Biofloculants

Purified isolates were introduced into 50ml of bio-flocculant production medium and then incubated for 3days. The culture broth was diluted into two volumes of distilled water and centrifuged at 4,000 rpm for 15 minutes. The supernatant was poured into three volumes of acetone (1:3) and added three times to precipitate the biopolymer flocculant. The precipitate was then centrifuged at 8000 rpm for 20mins and washed by ether. The crude obtained was dialyzed at 4°C overnight in deionized water and vacuum dried overnight in a desiccator to obtain pure bio-flocculants (Elkady *et al.*, 2011).

Comment 10: Please observe that it is normally very important to analyze also filtered samples to be able to address the true efficiency of the different methods!

Jar test determination of bioflocculant dosage and measurement of Bioflocculaing activity

Different concentrations (0.1 to 1.0 mg/mL) of purified bioflocculant were prepared. Their flocculating activities were measured against 4g/L kaolin clay suspension. A 3.0 mL of 1% (w/v) CaCl_2 was added to the different concentrations of the purified bioflocculant and mixed with 100 mL of kaolin clay suspension in 500ml beakers. The solution was rapidly mixed at 160 rpm for 2 minutes, followed by gradual flocculation at 40 rpm for 2 minutes and sedimentation for 5minutes. After sedimentation, 2 mL was gently withdrawn from the upper clarifying phase in order to measure the flocculating activity. The concentration dosage that gave the best flocculating activity was used for subsequent experiment (Elkady *et al.*, 2011).

Preparation of dialysis bag

Ethylene diamine tetraacetic acid (EDTA) (0.27g) was weighed into 100 mL of distilled water which was boiled. The dialysis bag was placed in the boiling water and was made to boil. The bag was removed and rinsed with distilled water. This process aids easy opening of the dialysis bag (Elkady *et al.*, 2011).

Preparation of moringa seed powder, alum and chlorine for water treatment

Good quality *Moringa oleifera* seeds were harvested from FUTA area and made to dry in the sun. The pods and shell were removed after drying after which it was blended with the aid of an electric blender. The resulting powder was used in the water treatment process as a biological flocculant and disinfectant. This was used in varying quantities for the treatment of the water samples of 1000 mL in the following quantities: 0.1g, 0.2g and 0.4g. Three hundred grams (300g) of aluminum potassium sulphate purchased from Akure market was crushed using mortar and pestle. It was then employed in the water treatment process with in varying quantities (0.1g, 0.2g, 0.4g) to 1000 mL of the waters sample. Sodium hypochlorite was used in concentrations of 1, 2 and 4 mL to disinfect 1000mL of stream water and 2,4 and 8mls to disinfect 1000 mL of abattoir water. (Amagloh and Benang, 2009).

Water treatment with varying dosage of Alum, Biofloculant, Chlorine and *Moringa oleifera* Seed Powder

Test for best concentration of treatment agent

Different concentrations such as the recognized and recommended dosage, half of recommended dosage and double dose of treatment agents (alum, biofloculant, chlorine and moringa) were used to detect the dosage best fit for the treatment analysis. After allowing the water sample to sit for a 30 minute period after collection, the supernatant was carefully collected in another clean container; 1000 mL of each water sample was in triplicate differently dosed with the recommended dosage, half of the recommended and double dose of the recommended. The optical density of the water samples were detected with the aid of a spectrophotometer 30minutes after treatment and 24hours after. The microbiological load was also detected after 30 minutes of treatment and 24 hours of treatment (Elkady *et al.*, 2011).

The selected dose for each of the treatment agents (alum, biofloculant, chlorine and moringa) were used to treat in triplicates 1 liter of the collected water samples in sterilized containers the way it was done above. The treatment agents were used in the following order: each treatment agent: alum; biofloculant; chlorine; moringa seed powder. Combinations of two treatment agents: biofloculant and chlorine; biofloculant and moringa seed powder; chlorine and moringa seed powder. Combinations of three treatments; alum, biofloculant and chlorine; alum, biofloculant and moringa seed powder; alum, chlorine and moringa seed powder; biofloculant, chlorine and moringa seed powder. Then all the four treatment agents combined alum, biofloculant, chlorine and moringa seed powder. Each of these water samples had a control where the above listed agents were not added (Amagloh and Benang, 2009; Elkady *et al.*, 2011).

The optical density of the water samples were detected with the aid of a spectrophotometer at a wavelength of 550 nm 30minutes after treatment and 24hours after. The microbiological load was also detected after 30 minutes of treatment and 24 hours of treatment (Elkady *et al.*, 2011; Cosa *et al.*, 2013).

A twenty milliliter (20ml) of cell free supernatant suspension of the bio-flocculant was added to 1 liter each water sample and was allowed to stand for 10 minutes. The optical density of the clarifying solution was then measured with a spectrophotometer at 550 nm.

The flocculating ability of the bacterium polymer was measured using the equation

$$;Flocculating\ Activity\ (\%) = \frac{(B-A)}{A} \times 100$$

Where A is the absorbance of the sample experiment, B is the absorbance of the control experiment at 550 nm. (Cosa *et al.*, 2013; Ugbenyen and Okoh, 2013).

Statistical Analysis

Data are presented as mean \pm standard error (SE). Significance of difference between different treatment groups was tested using one-way analysis of variance (ANOVA) and significant results were compared with Duncan's multiple range tests using SPSS window 8 version 20 software. For all the tests, the significance was determined at the level of $P < 0.05$.

Results

Flocculating activities of water samples treated with alum recorded their highest flocculating activities with increased dosage. Flocculating activities increased after 24 hours of treatment as against the flocculating activities recorded after 30 minutes of treatment. The flocculating activities recorded when well and stream waters were treated had flocculating activities above average while that of abattoir waste water was between the range of 21-25% (Table 1).

Table 2 shows the flocculating activities suggesting the best dosage of bioflocculant treatment for water samples. Highest flocculating activities were recorded with the highest bioflocculant concentration with the exception of stream water after 30 minutes of treatment which its recorded highest flocculating activities when 0.5mL of bioflocculant was used in water treatment. Abattoir waste water recorded its highest flocculation after 30 minutes of treatment with 0.5mL, the flocculating activity reduced after 24 hours. Treatment with 1.0 mL of bioflocculant reduced flocculating activity after 24 hours treatment.

Well water when treated with *Moringa oleifera* seed powder had a steady increase in its flocculating activity over time with increase in its doses. Increase in flocculating activity was also recorded after 24 hour treatment period. The case was also the same with stream and abattoir waste waters. However, the flocculating activity of abattoir waste water was low when placed side by side with well and stream waters (Table 3).

Table 1 Flocculating activities suggesting the best dosage of alum treatment for the water samples

Dosage Well Water		Stream Water		Abattoir Waste Water		
(mg/L)	30 mins	24 hours	30 mins	24 hours	30 mins	24 hours
50	65.34±1.57 ^a	75.34±0.58 ^a	71.47±0.69 ^a	75.50±1.15 ^a	25.07±2.01 ^a	23.45±0.58 ^a
100	72.25±1.15 ^b	76.53±0.53 ^a	72.58±1.45 ^a	76.53±0.53 ^a	23.30±0.58 ^b	21.48±0.00 ^b
200	78.20±0.63 ^c	87.33±0.58 ^c	78.20±0.64 ^b	87.33±0.58 ^b	24.30±0.58 ^b	24.60±0.15 ^b

Data are presented as Mean ± S.E (n=3). Values with the same superscript letter(s) along the same row are not significantly different (P<0.05).

Comment 11: Please note that the results must be specified: Do they represent % - removal or something else. Also do not present mean values as long as you have only 3 discrete observations! These comments are valid for all the Tables below!

Table 2 Flocculating activities suggesting the best dosage of bioflocculant treatment for the water samples

Dosage (ml/L)	Well Water		Stream Water		Abattoir Waste Water	
	30 mins	24 hours	30 mins	24 hours	30 mins	24 hours
0.5	63.24±1.21 ^a	69.55±1.15 ^a	95.35±0.00 ^a	96.14±0.05 ^a	25.08 ^c ±2.02 ^a	23.45±0.58 ^a
1.0	87.39±0.69 ^b	88.09±1.15 ^b	96.04±0.02 ^b	96.67±0.16 ^b	23.30±2.02 ^b	21.48±0.00 ^b
2.0	88.07±0.58 ^b	88.65±1.21 ^b	96.19±0.05 ^{b9}	96.93±0.17 ^c	24.30±0.58 ^c	24.60±0.15 ^b

Data are presented as Mean ± S.E (n=3). Values with the same superscript letter(s) along the same row are not significantly different (P<0.05).

Table 3 Flocculating activities suggesting the best dosage of *Moringa oleifera* seed powder treatment for the water

samples

Dosage (g/L)	Well Water		Stream Water		Abattoir Waste Water	
	30 mins	24 hours	30 mins	24 hours	30 mins	24 hours
50	63.82±0.58 ^a	66.98±0.59 ^a	65.82±1.15 ^a	69.00±0.58 ^a	47.40±0.88 ^a	47.20±0.00 ^a
100	66.20±1.53 ^a	67.50±0.33 ^a	67.20±1.15 ^a	69.17±0.58 ^a	52.37±1.15 ^b	55.00±1.15 ^b
200	66.00±0.58 ^b	73.43±2.84 ^a	68.10±0.51 ^a	72.00±1.15 ^b	55.50±1.15 ^b	58.01±0.58 ^b

Data are presented as Mean ± S.E (n=3). Values with the same superscript letter(s) along the same row are not significantly different

(P<0.05).

When treatment combinations alum, bioflocculant, chlorine, and *Moringa oleifera* seed powder was applied in the treatment of well water, treatment with alum alone yielded the least flocculating activity. Combined treatment of alum and bioflocculant had the highest flocculating activity. There was a slight increase in the flocculating activity after 24 hours of treatment (Figure 1).

Singular treatment of stream water with chlorine yielded the lowest flocculating activity. Combined treatment of AB had the highest flocculating activity with B, BM, ABM, ACM, BCM and BM following closely. All these treatment combinations recorded slight increase in its flocculating activity after 24 hours treatment (Figure 2).

Singular treatment of alum recorded the lowest while the highest flocculating activity was recorded when the combined use of alum and bioflocculant was used in abattoir waste water treatment (Figure 3).

Table 4 presents number of coliform growth colonies on the agar plate. Number of growth colonies reduced with increased concentration and time in all the water samples treated. However the lowest numbers of colonies was recorded in well water and highest in abattoir waste water.

Total bacterial growth of water samples treated with varying concentrations of alum is presented in Table 5. Number of colonies reduced with increased concentration and time in the treatment of well and stream water samples. After 30 minutes treatment with alum at 400mg concentration, flocculating activity increased beyond that of 200mg. the flocculating activity however reduced after 24 hours of treatment.

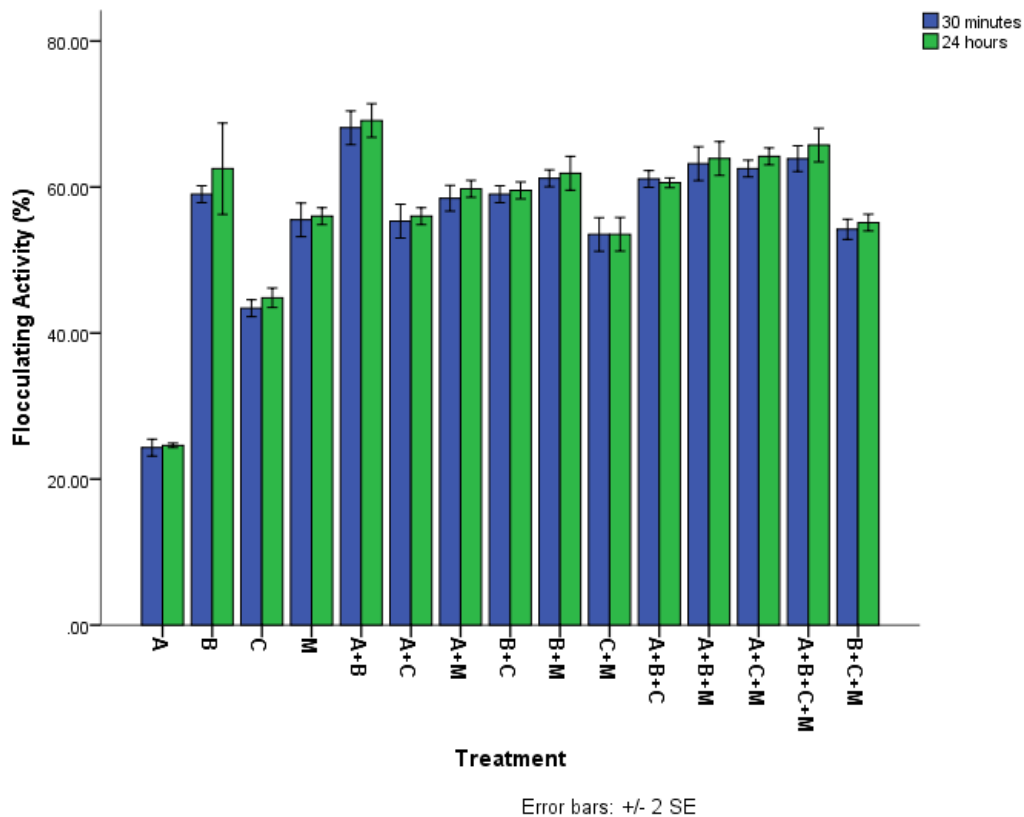


Figure 1 Flocculating activities of well water samples treated with different combinations

KEY A- Alum B- Bioflocculant C-Chlorine M-Moringa

Comment 12: Does the "Flocculation activity means the removal efficiency?"

Please clarify! This comment is valid for all figures below!

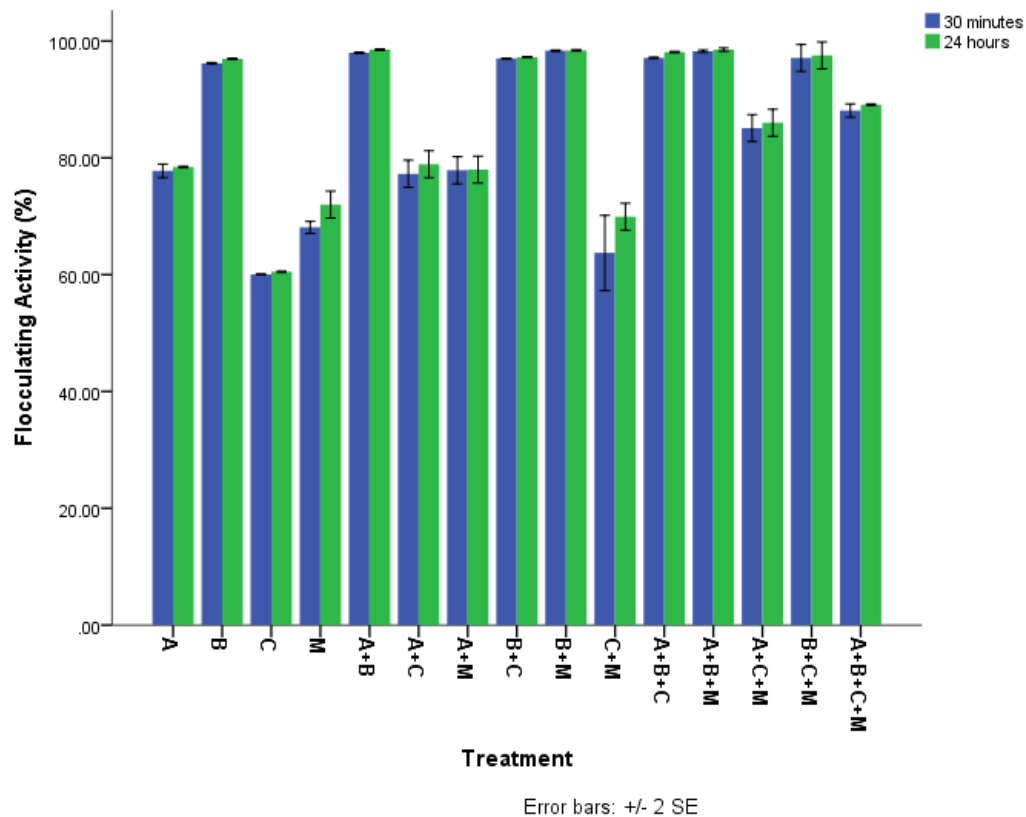


Figure 2 Flocculating Activities of stream water sample with different treatment combinations

KEY A- Alum B- Bioflocculant C-Chlorine M-Moringa

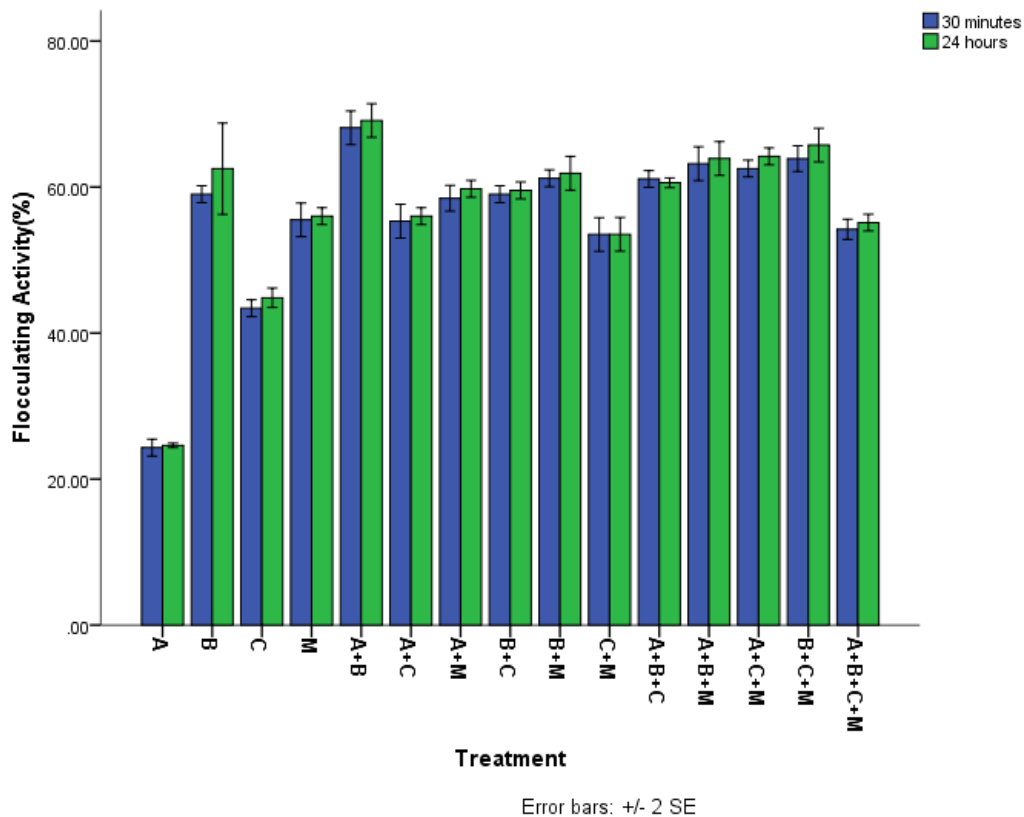


Figure 3 Flocculating Activities of abattoir waste water sample with different treatment combinations

KEY A- Alum B- Biofloculant C-Chlorine M-Moringa

Table 4 Coliform Growth of water samples treated with alum using varying concentrations

Dosage Well Water			Stream Water		Abattoir Waste Water	
(mg/L)	30 mins	24 hours	30 mins	24 hours	30 mins	24 hours
50	14.33 \pm 1.20 ^a	11.66 \pm 0.88 ^a	24.00 \pm 0.57 ^a	22.00 \pm 0.57 ^a	64.66 \pm 1.45 ^a	61.00 \pm 0.57 ^a

100 14.00±0.58^{ab} 11.00±0.58^{ab} 21.00±0.58^b 20.67±0.88^a 57.67±0.88^b 54.00±0.57^b

200 11.00±0.58^b 10.00±0.58^b 22.33±0.88^b 19.33±0.33^a 47.00±1.15^c 44.00±0.57^c

Data are presented as Mean ± S.E (n=3). Values with the same superscript letter(s) along the same row are not significantly different (P<0.05).

Table 5 **Total bacterial Growth of water samples treated with alum using varying concentrations**

Dosage Well Water		Stream Water		Abattoir Waste Water		
(mg/L)	30 mins	24 hours	30 mins	24 hours	30 mins	24 hours
50	22.33±0.88 ^a	20.00±0.58 ^a	33.33±0.88 ^a	29.67±0.88 ^a	75±1.73 ^a	69.33±0.33 ^a
100	21.67±0.88 ^a	19.67±0.67 ^a	30.00±0.58 ^b	28.00±1.00 ^a	66±1.15 ^b	61.00±0.58 ^{ab}
200	20.00±0.58 ^a	19.00±0.58 ^a	27.33±0.33 ^c	27.33±0.33 ^a	73±0.58 ^b	41.00±10.50 ^c

Data are presented as Mean \pm S.E (n=3). Values with the same superscript letter(s) along the same row are not significantly different ($P<0.05$).

Biofloculant treatment yielded significant reduction in the numbers of coliform colonies with increased dosage and time when treated with stream water. Abattoir waste water followed the same sequence. However, in the treatment of AWW, the number of colonies were greatly increased (Table 6).

Treatment of water of water samples with biofloculant yielded steady decrease in the flocculating activities of the water samples with increased concentration of treatment agent and time (Table 7).

About 90% reduction was recorded when *Moringa oleifera* seed powder was used in the treatment of water samples in the number of coliform with respect to concentration and time (Table 8).

Steady decrease was recorded in the bacterial population with increased concentration and treatment time (Table 9).

Figure 4 shows the effect of treatment combinations on the number of coliform for well water sample. Treatment combinations BM, CB, ABC, ABM and ACM yielded no growth. Singular treatment with alum yielded the highest number of colony after 30 minutes of treatment which further reduced after 24 hours.

Singular treatment of well water with chlorine yielded no bacterial growth. No colony growth was recorded with AM, AC, BC, CM, ABC, ACM, BCM, and ABCM. Highest number of colony was recorded after 24 hours of treatment with BCM (Figure 5).

Table 6 Coliform Growth of water samples treated with bioflocculant using varying concentrations

Dosage Well Water			Stream Water		Abattoir Waste Water	
(ml/L)	30 mins	24 hours	30 mins	24 hours	30 mins	24 hours
0.5	15.67±0.67 ^a	12.33±1.45 ^a	7.00±0.58 ^a	5.33±0.88 ^a	183.67±0.88 ^a	181.00±0.58 ^a
1.0	7.3±1.45 ^b	5.00±1.15 ^b	3.33±0.88 ^a	2.67±0.88 ^a	180.00±0.58 ^b	178.00±1.52 ^b
2.0	0.67±0.67 ^c	0.00±0.00 ^c	4.00±0.58 ^b	1.33±0.33 ^b	78.33±0.33 ^c	77.00±0.58 ^b

Data are presented as Mean ± S.E (n=3). Values with the same superscript letter(s) along the same row are not significantly different (P<0.05).

Table 7 Total bacterial Growth of water samples treated with bioflocculant using varying concentrations

Dosage Well Water			Stream Water		Abattoir Waste Water	
(ml/L)	30 mins	24 hours	30 mins	24 hours	30 min	24 hours
0.5	30.006±0.58 ^a	28.00±0.58 ^a	26.00±2.08 ^a	24.68±1.76 ^a	200.00±0.00 ^a	198.00±0.58 ^a
1.0	27.00±1.15 ^b	25.00±0.58 ^b	20.00±0.58 ^b	18.33±0.33 ^b	199.00±0.50 ^a	199.33±0.88 ^b
2.0	24.00±0.58 ^c	22.00±1.15 ^c	18.00±0.58 ^c	16.67±0.89 ^c	93.33±0.88 ^a	87.33±0.88 ^c

Data are presented as Mean \pm S.E (n=3). Values with the same superscript letter(s) along the same row are not significantly different (P<0.05).

Table 8 Coliform Growth of water samples treated with *Moringa oleifera* seed powder using varying concentrations

Dosage Well Water			Stream Water		Abattoir Waste Water	
(mg/L)	30 mins	24 hours	30 mins	24 hours	30 mins	24 hours
50	56.33±0.88 ^a	52.33±1.45 ^a	95.67±1.20 ^a	70.00±2.51 ^a	185.67±0.33 ^a	178.67±8.17 ^a
100	52.67±1.20 ^b	49.67±1.20 ^b	32.67±1.45 ^b	30.00±4.58 ^b	182.33±1.20 ^b	169.33±0.88 ^b
200	8.00±0.58 ^c	7.33±0.33 ^b	21.00±0.58 ^c	18.00±0.58 ^c	40.00±0.58 ^c	35.33±0.88 ^b

Data are presented as Mean \pm S.E (n=3). Values with the same superscript letter(s) along the same row are not significantly different (P<0.05).

Table 9 Coliform Growth of water samples treated with *Moringa oleifera* seed powder using varying concentrations

Dosage Well Water			Stream Water		Abattoir Waste Water	
(mg/L)	30 mins	24 hours	30 mins	24 hours	30 mins	24 hours
50	94.67±0.88 ^a	90.00±0.58 ^a	121.67±1.20 ^a	140.67±2.17 ^a	197.67±0.33 ^a	195.09±0.58 ^a
100	80.33±0.88 ^b	70.00±0.58 ^b	73.00±1.15 ^b	62.00±1.15 ^a	186.67±2.84 ^b	176.67±2.19 ^b

200 18.33 ± 0.33^c 16.33 ± 0.33^c 26.00 ± 0.58^c 24.00 ± 0.58^b 70.00 ± 0.58^c 66.00 ± 0.58^c

Data are presented as Mean \pm S.E (n=3). Values with the same superscript letter(s) along the same row are not significantly different ($P < 0.05$).

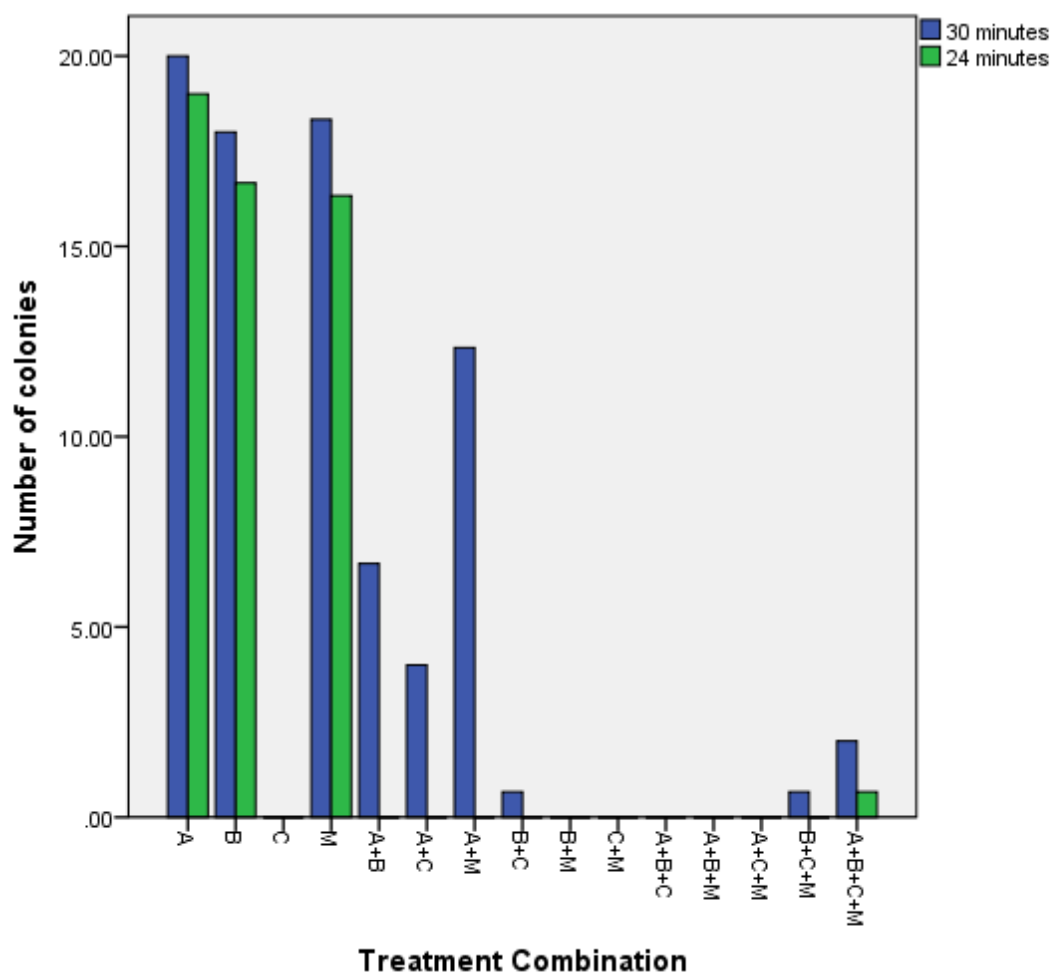


Figure 4 Effect of various treatment combinations on the number of coliform bacteria for well water sample

KEY A- Alum B- Bioflocculant C-Chlorine M-Moringa

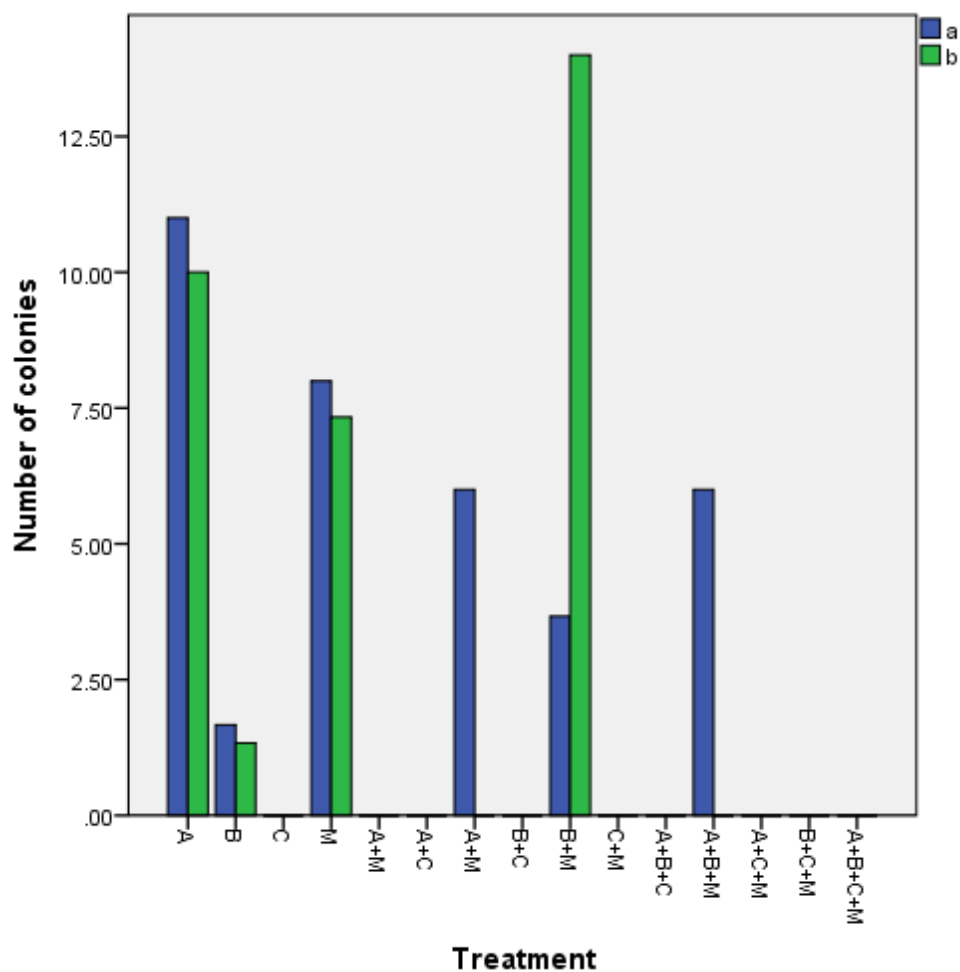


Figure 5 Effect of various treatment combinations on the number of bacteria for well water sample

KEY A- Alum B- Biofloculant C-Chlorine M-Moringa

In figure 4, highest number of colonies was gotten after 30 minutes of treatment with alum which subsequently reduced after 30 minutes. No coliform growth was observed with BM, CM, ABC, ACM, BCM, ABCM.

Figure 5 shows that no bacterial growth occurred with the following treatment patterns: C, CM, ABC, ACM. Highest number of bacterial growth was recorded with A.

No coliform growth was recorded in the treatment of AWW with AC, CM, ABC, ABM, BCM and ABCM. Highest FA was recorded in alum and AM after 30 minutes of treatment with significant reduction after 24 hours (Figure 6).

Treatment with M, CM, ABC, ABM, ACM, BCM and ABCM did not yield any growth in the treatment of AWW. Highest FA was recorded with treatment after 24 hours. Treatment with bioflocculant did not bring about any change with time (Figure 7).

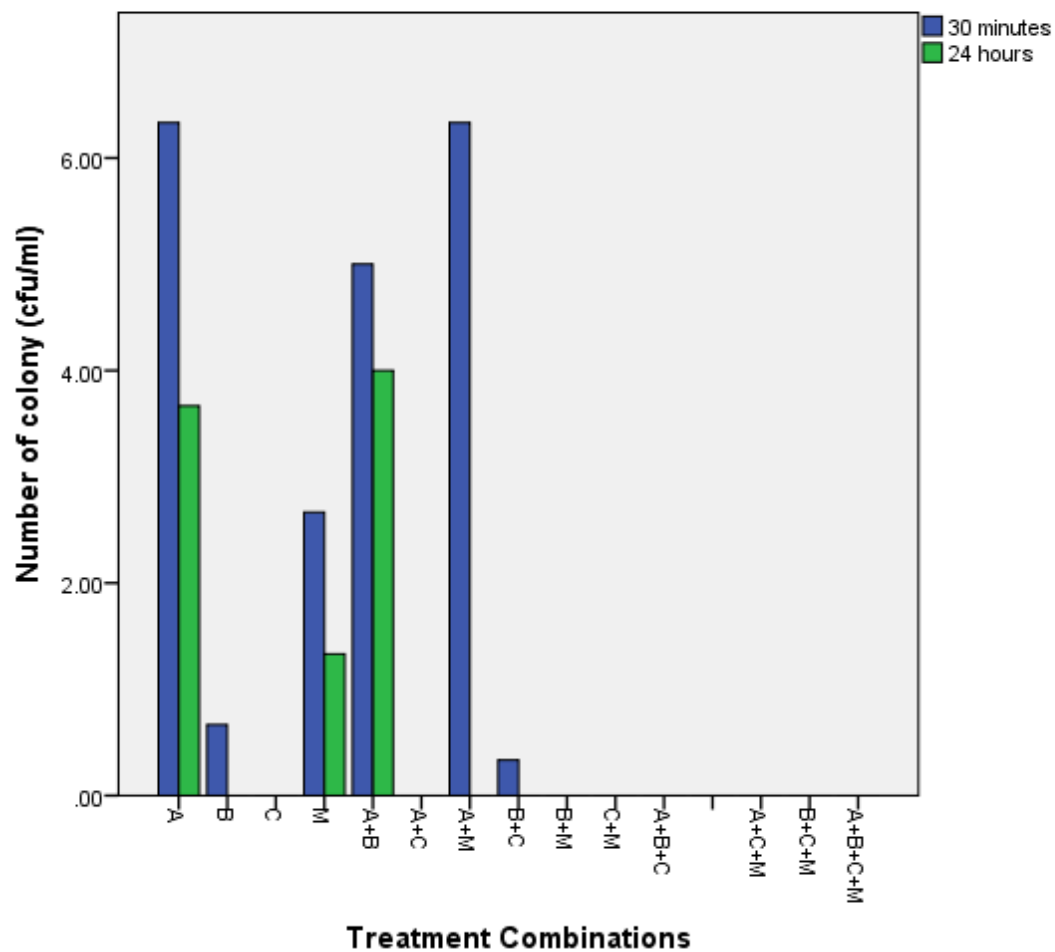


Figure 6 Effect of various treatment combinations on the number of coliform bacteria for stream water sample

KEY A- Alum B- Bioflocculant C-Chlorine M-Moringa

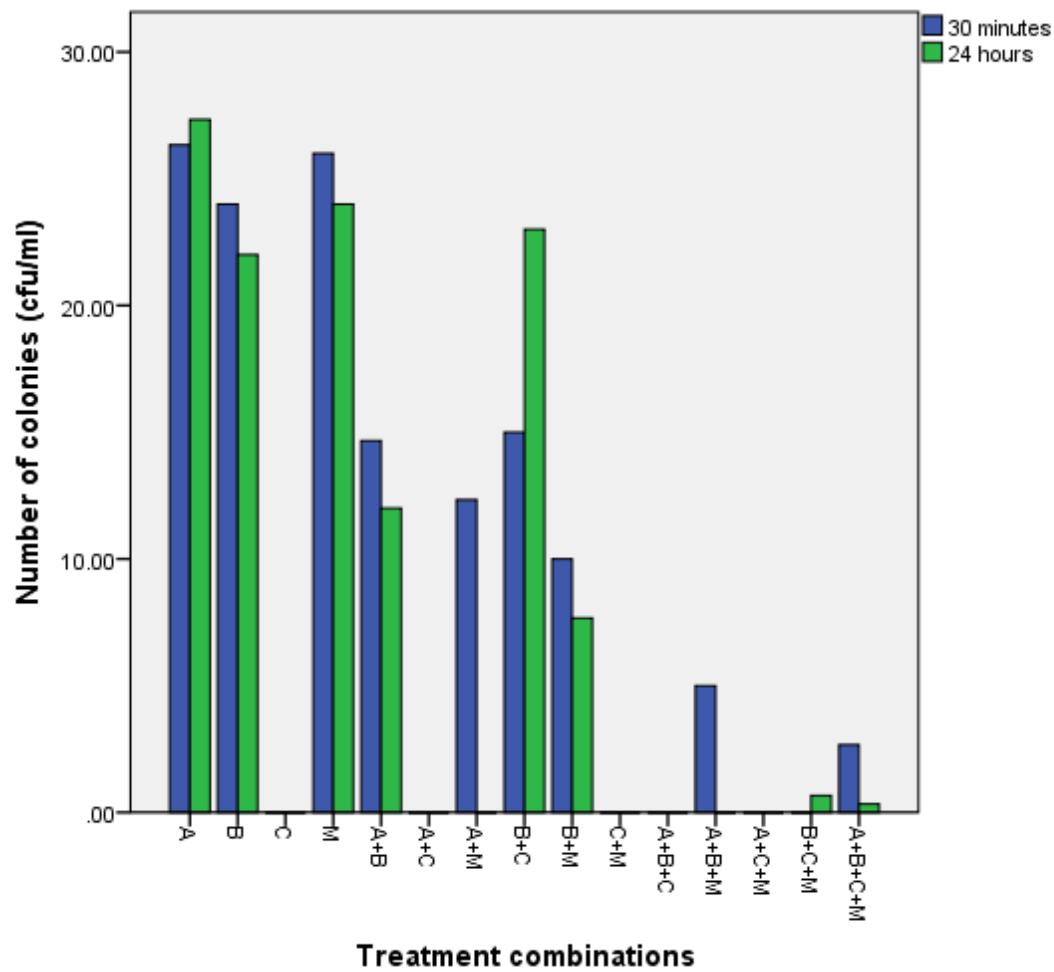


Figure 7 Effect of various treatment combinations on the number of bacteria growth on NA for stream water sample

KEY A- Alum B- Biofloculant C-Chlorine M-Moringa

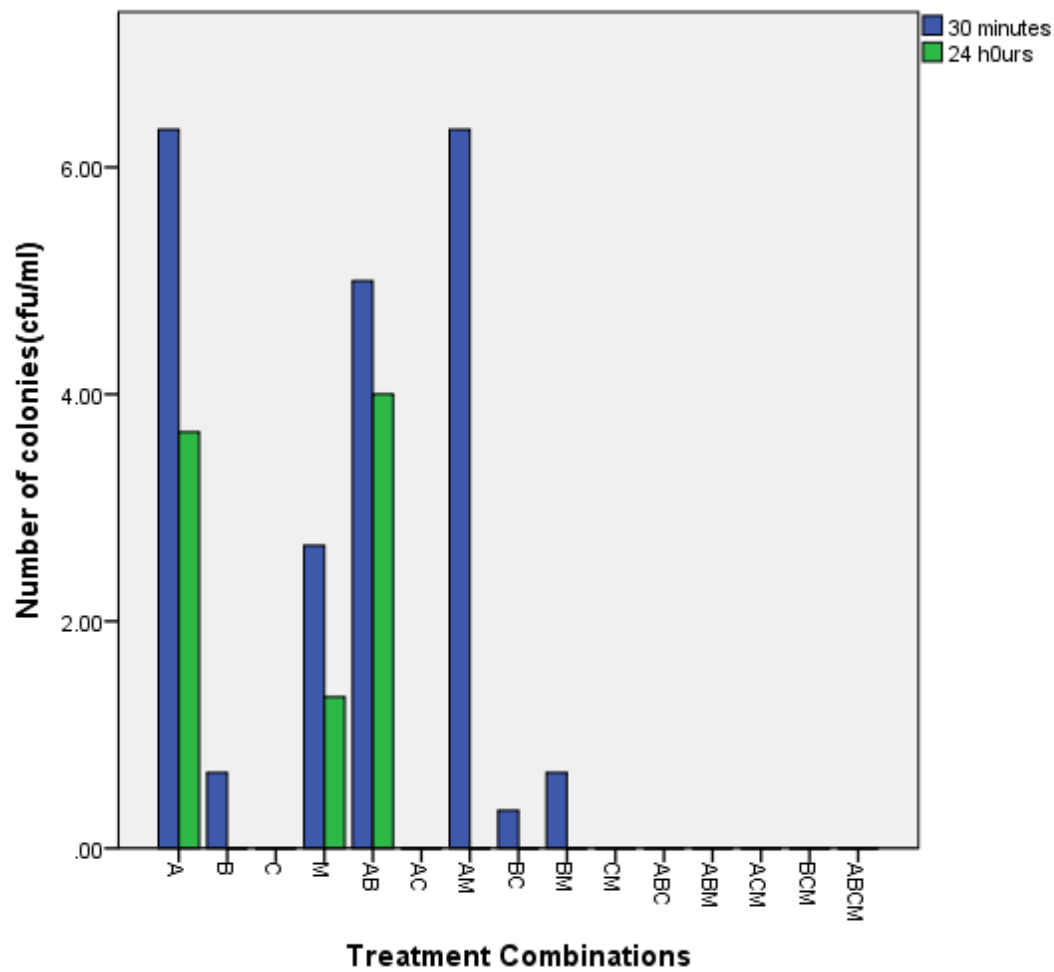


Figure 8 Effect of various treatment combinations on the number of coliform bacteria for abattoir waste water sample

KEY A- Alum B- Bioflocculant C-Chlorine M-Moringa

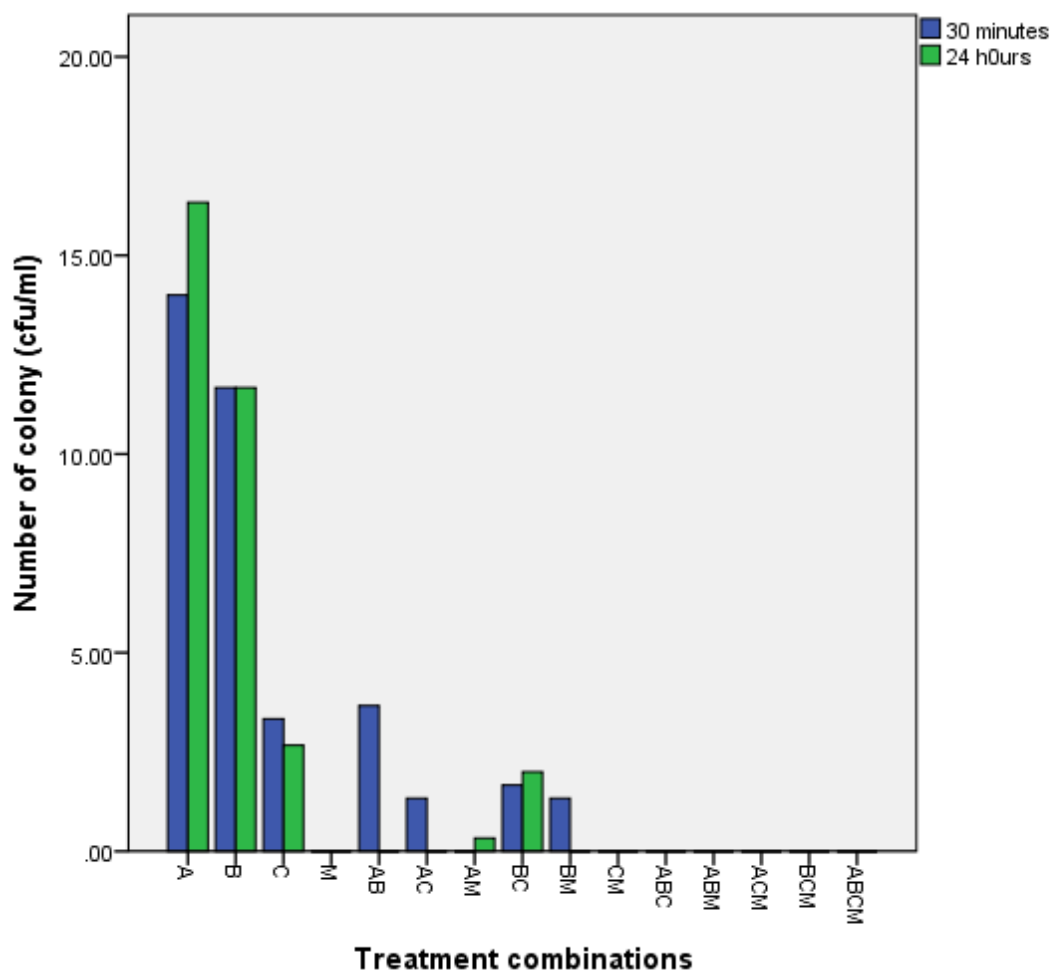


Figure 9 Effect of various treatment combinations on the number of bacteria growth on NA for abattoir waste water sample

KEY A- Alum B- Biofloculant C-Chlorine M-Moringa

Discussion

The array of bacteria isolated from the well water sample are typical of well water resident bacteria. Ngwa and Chrysathus (2013) isolated *Klebsiella* sp, *Escherichia coli*, *Salmonella* sp, *Enterbacter* and *Proteus* sp from well water sources in Bambui, Cameroon student residential area. Agwaranze *et al.*, (2017) also isolated *E. Coli*, *Staphylococcus aureus*,

Pseudomonas sp, *Enterococcus* sp and *Enterobacter* sp from well water sources in Wakuri, Nigeria. Ngwa and Chrysathus (2013) stated that most of the bacterial species isolated during their study are fecal related organisms. This indicates that these organisms might have been introduced into well water by fecal contamination. Nafarnda *et al*, (2012) isolated basically *E. coli* and Fecal *Streptococcus* from stream water bodies with which abattoir waste effluents are discharged. Benka-Coker and Ojior (1995). Isolated bacterial species from the genus *Salmonella*, *Escherichia*, *Shigella*, *Klebsiella*, *Streptococcus*, and *Staphylococcus* from Ikpoba river, Nigeria. The presence of these organisms were as a result of faecal discharge into the water body in that the abattoir waste water contains high percentage of coliform bacteria because of the contents of the gastro-intestinal tracts of the slaughtered animals are discharged directly into the water. Nafarnda *et al*, (2012) stated that the presence of faecal coliform may also indicate the presence of pathogenic viruses and protozoa.

Virtually all the bacteria species isolated from stream water were found resident in the Onyearugbulem abattoir waste water. The reason cannot be farfetched based on the fact that the bacterial species found in the stream were sourced from the abattoir effluents. Mittal (2004) stated that abattoir wastewater contains several million colony forming units (cfu) /100 ml of total coliform, fecal coliform, and *Streptococcus* groups of bacteria. The bacterial species isolated from abattoir slaughtering site include: *Escherichia coli*, *Citrobacter* sp, *B. subtilis*, *Bacillus cereus* (Habtamu *et al.*, 2013), *Micrococcus leteus* and *Klebsiella pneumoniae*. (Nandita *et al.*, 2015). The bacterial species isolated from the stream bank are in relation with the ones isolated by Onuoha, (2017). They are *Staphylococcus aureus*, *Escherichia coli*, *Pseudomonas* sp, *Bacillus cereus*, *Proteus* sp. The bacteria species isolated from the stream sediments correlates with the ones isolated by Eniola and Olayemi (2008). They include *Staphylococcus aureus*,

Klebsiella sp, *Clostridium* sp, *Shigella* sp, *Pseudomonas* sp, *Escherichia coli*, *Streptomyces* sp, *Salmonella* sp, *Bacillus cereus*, *Enterobacter* sp. Ntozonke *et al.* (2017) isolated his bioflocculant producing bacteria from the sediments of a stream. This agrees with the findings of this research where two bacterial species (*Bacillus subtilis* and *Streptomyces somaliensis*) were isolated from Onyearugbulem stream sediments.

Nwodo *et al.* (2014) used a consortium of *Streptomyces* and *Cellulomonas* isolated from Tyurine river in the eastern cape province of south Africa to produce bioflocculant which was capable of initiating flocculating activities between 78 -91%. Shimofuruya *et al.* (1996) isolated and produced biopolymer from *Streptomyces griseus*. This biopolymer was capable of aggregating kaolin particles to form small flocs. Manisvasgan *et al.*, (2015) produced bioflocculant from *Streptomyces* sp MBRC-91.

Best flocculating activity was achieved with the highest concentration and time when alum, bioflocculant purified from *Bacillus subtilis* and *Moringa oleifera* seed powder was used in the treatment of water samples. Yuliasri *et al* (2016) used 80mg/l and 100mg/l of *Moringa oleifera* seed powder in ground water and wastewater treatment. The choice of dosage for *Moringa oleifera* seed powder is relative. *Bacillus muscilaginosus* MBFA9 isolated from soil sample had a good flocculating capability which achieved a flocculating rate of 99.6% for kaolin suspension at a dosage of 0.1ml/l (Deng *et al.*, 2003). A 20 mg/l bioflocculant dosage was sufficient in providing more than 85% humic acid removal (Zouboulis, 2004). The dosage of bioflocculant used in water treatment is dependent on the source, composition and the method of purification of the bioflocculant.

Well water when treated with different combinations of alum, biofloculant, chlorine and *Moringa oleifera* seed powder. There was general increase in the flocculating activities of each treatment combination after 24 hours of treatment. Combined therapy of alum and biofloculant had the highest flocculating activity followed by the combined therapy of alum, biofloculant, chlorine and *Moringa oleifera* seed powder. Alum recorded the lowest flocculating activity. The increase in the flocculating activity with time could be as a result of enough contact time of alum with the particles resident in the water. High flocculating activity recorded with combined use of alum and biofloculant could be as a result of the fact that both alum and biofloculants are flocculants. The difference only lies in the physical and chemical nature. The combined treatment of stream water also witnessed an increase in the flocculating activity of each treatment parameter, same was also experienced in the treatment of abattoir waste water. B proved to be the most effective flocculating agent for stream water while C brought about the lowest flocculating activity. The reason behind this cannot be farfetched as chlorine itself is a disinfecting agent and not a flocculant.

Coliform count of the water samples treated with alum, there was general reduction in the growth of coliform with respect to increased dosage and time. Biofloculant purified from *Bacillus subtilis* totally eliminated coliform in well water after 24 hours of treatment. Coliform count of stream water was reduced to one. *Moringa Oleifera* proved more effective in the elimination of coliform than alum. After the treatment of the water samples with alum, total bacterial count was 20.00 ± 0.58 , 27.00 ± 0.33 & 41.00 ± 1.52 respectively for well, stream and abattoir waste water. Treatment of well water with biofloculant yielded 0.00 ± 0.00 , 1.33 ± 0.33 and 77.0 ± 0.58 for well, stream and abattoir waste water respectively. 22.00 ± 1.15 , 16.00 ± 0.89

and 87.0 ± 0.88 were the values gotten for the treatment of the above listed water samples with *Moringa oleifera* seed powder.

Singular chlorine therapy; combined therapy of biofloculants and *Moringa oleifera* seed powder, combined therapy of biofloculant and *Moringa oleifera* seed powder; combined therapy of chlorine and *Moringa oleifera* seed powder; combined therapy of alum, biofloculant and chlorine; combined therapy of alum, biofloculant and *Moringa oleifera* seed powder totally eliminated the coliform growth for well water sample. Singular Chlorine therapy; combined therapy of alum and *Moringa oleifera* seed powder; biofloculant and *Moringa oleifera* seed powder; alum, biofloculant and *Moringa oleifera* seed powder; alum, chlorine and *Moringa oleifera* seed powder; biofloculant, chlorine and *Moringa oleifera* seed powder; and alum, biofloculant, chlorine and *Moringa oleifera* seed powder worked effectively in the removal of coliform from stream water. Chlorine; alum and chlorine; chlorine and *Moringa oleifera* seed powder; alum, biofloculant and chlorine; alum, biofloculant and *Moringa oleifera* seed powder; alum, chlorine and *Moringa oleifera* seed powder; biofloculant, chlorine and *Moringa oleifera* seed powder; and alum, biofloculant, chlorine and *Moringa oleifera* seed powder totally eliminated coliform from abattoir waste water. Chlorine; alum and *Moringa oleifera* seed powder; alum and chlorine; chlorine and *Moringa oleifera* seed powder; alum, biofloculant and chlorine; alum, chlorine and *Moringa oleifera* seed powder, biofloculant, chlorine and *Moringa oleifera* seed powder; and alum, biofloculant, chlorine and *Moringa oleifera* seed powder totally eliminated bacterial growth in well water. Alum and chlorine; chlorine and *Moringa oleifera* seed powder; alum, biofloculant and *Moringa oleifera* seed powder totally eliminated bacterial growth in stream water. *Moringa oleifera* seed powder; chlorine and *Moringa oleifera* seed powder; alum, biofloculant and

Moringa oleifera seed powder; alum, chlorine and *Moringa oleifera* seed powder; bioflocculant, chlorine and *Moringa oleifera* seed powder totally eliminated bacterial growth in abattoir waste water.

Conclusion

Bioflocculant produced from *Bacillus subtilis* isolated from the stream sediment of Onyearugbulem market has exhibited maximum coagulating effect on well, stream, and abattoir water samples. The bioflocculant also exhibited inhibitory effect on the bacterial population in the water samples especially coliform bacteria.

This bioflocculant has proven to be more effective than its chemical counterpart, alum sulphate in water sediment coagulation and the inhibition of bacteria.

Moringa oleifera seed powder exhibited both coagulating and inhibitory effects on the water samples. Chlorine, a chemical disinfectant still proved more effective than *Moringa oleifera* seed powder.

Comment 13: Please observe the critical comments on the use of chlorine above!!

References

Amagloh, F.K. and Benang, A. (2009). Effectiveness of *Moringa oleifera* seed as coagulant for water purification. *African Journal of Agricultural Research* 4(2): 119-123.

- Agwaranze, D.I., Ogodo, A., Blessing N. C., and Agyo, P. (2017). Bacteriological Examination of Well Water in Wukari, Nigeria. *International Journal of Scientific Research in Environmental Sciences*. 5: 42-46.
- Benka-Coker, M. O., and Ojior, O. O. (1995). Effect of slaughterhouse wastes on the water quality of Ikpoba River, Nigeria. *Bioresource Technology*, 52(1):5-12.
- Chapman, D. V. and World Health Organization. (1996). Water quality assessments: a guide to the use of biota, sediments and water in environmental monitoring.
- Cosa, S., Ugbenyen, M. A., Mabinya, L., Vuyani, I. and Okoh I. A., (2013). Characterization of a thermostable polysaccharide bioflocculant produced by *Virgibacillus* species isolated from Algoa bay. *African Journal of Microbiology Research*. 7(23): 2925-2938
- Deng , S., Bai, R., Hu, X., and Luo, Q. (2003). Characteristics of a bioflocculant produced by *Bacillus mucilaginosus* and its use in starch wastewater treatment. *Applied Microbiology and Biotechnology* 60(5): 588–593.
- Elkady, M. F., Farag, S., Zaki, S., Abu-Elreesh, G., and Abd-El-Haleem, D. (2011). *Bacillus mojavensis* strain 32A, a bioflocculant-producing bacterium isolated from an Egyptian salt production pond. *Bioresource Technology*, 102(17):8143-8151.
- Eniola, K.I. and Olayemi, B. (2008). Linear Akybenzene sulfonate tolerance in bacteria isolated from sediments of Tropical water bodies polluted with detergents. *Reviewed Biological Tropical Journal* 56(4):601-1595.
- Flury, M. (1996). Experimental evidence of transport of pesticides through field soils—a review. *Journal of Environmental Quality*, 25(1); 25-45.
- Girards, J. (2005). *Principle of Environment Chemistry*, Jones and Barlett, USA. Pp 12-13

- Habtamu, T. Kelali, A. and Shewit, K. (2013). Food Safety Knowledge of Abattoir Butchery Shops and the Microbial Profile of Meat in Mekelle City, Ethiopia. *Asian Pacific Journal of Tropical Biomedicine* 3(5);407-412
- Hellawell, J. M. (Ed.) (2012). *Biological indicators of freshwater pollution and environmental management*. Springer Science & Business Media. pp 53-56.
- Hussain, I., Raschid, L., Hanjra, M. A., Marikar, F., and Van Der Hoek, W. (2002). Valuing Impacts. *Wastewater use in agriculture: review of impacts and methodological issues in valuing impacts: with an extended list of bibliographical references* (Vol. 37). Colombo, Sri Lanka: International Water Management Institute.
- Manivasagan, P., Kang, K. H., Kim, D. G., and Kim, S. K. (2015). Production of polysaccharide-based bioflocculant for the synthesis of silver nanoparticles by *Streptomyces* sp. *International Journal of Biological Macromolecules*, 77:159-167.
- Mittal, G.S. (2006). Treatment of wastewater from abattoirs before land application; a review. *Bioresource Technology* 97: 1119-1135
- Moghimipour, E., Salimi, A., Rezaee, S., Balack, M. and Handali, S. (2014). Influence of Flocculating Agents and Structural Vehicles on the Physical Stability and Rheological Behavior of Nitrofurantoin Suspension. *Jundishapur Journal of Natural Pharmaceutical Products*, 9(2): 24-32.
- Nandita, D; Badaru, O.; Ayobami, A. and Adekeye, B.T. Microbiological Assessment of Agege Abattoir situated in Lagos State, Nigeria. *International Organization of Scientific Research-Journal of Environmental Science, Toxicology and Food Technology (IOSR-JESTFT)* 9(9): 86-93.

- Narfarnda, W. D., Yaji, A. and Kubkomawa, H.I (2006). Impact of abattoir on aquatic life; a case study of Yola abattoir. *Global Journal of Pure and Applied Science* 12:31-33.
- Nafarnda, W.D., Ajayi, L.E., Shawulu, J.C. Kawe, M.S. Omeiza, G.K. Sani, N.A. Tenuche, O.Z. Dantong, D.D. Tags, S.Z. (2012). Bacteriological Quality of Abattoir Effluents Discharged into water Bodies in Abuja, Nigeria. *International Scholarly Research Network (ISRN) Veterinary Science* 2012; 5
- Ngwa, N. R., and Chrysanthus, N. (2013). Bacteriological Analysis of Well Water Sources in the Bambui Student Residential Area. *Journal of Water Resource and Protection*, 5(11):1013.
- Ntozonke, N. Okaiyeto, K. Okoli, A.S Olaniran, A.O. Nwodo, U.U. and Okoh, A. I. (2017). A Marine Bacterium *Bacillus* sp isolated from the sediment samples of Algoa Bay in South Africa produces a polysaccharide Biofloculant. *International Journal of Environmental Research and Public Health* 14:1149-1157.
- Nwodo, U.U., Agunbiade, M.O., Green, E., Mabinya, L.V., and Okoh, A. I., (2012). A Fresh water Streptomyces, isolated from Tyume River produces a predominantly extracellular Glycoprotein biofloculant. *International Journal of Molecular Science* 13: 8679-8695.
- Nwodo, U.U., Green, E., Mabinya, L. V., Okaiyeto, K., Rumbold, K., Obi, C. L., and Okoh, A. I. (2014). Biofloculant production by a consortium of *Streptomyces* and *Cellulomonas* species and media optimization via surface response model. *Colloids and Surfaces Biointerfaces*.116: 257-264.
- Okaiyeto, K., Nwodo, U. U., Mabinya, L. V., and Okoh, A. I. (2013). Characterization of a biofloculant produced by a consortium of Halomonas sp. Okoh and Micrococcus sp. Leo. *International Journal of Environmental Research and Public Health*, 10(10): 5097-5110.

- Okaiyeto, K., Nwodo, U. U., Mabinya, L. V., Okoli, A. S., and Okoh, A. I. (2015). Characterization of a Bioflocculant (MBF-UFH) Produced by *Bacillus* sp. AEMREG7. *International Journal of Molecular Sciences*, 16(6):12986-13003.
- Onda, K., LoBuglio, J., and Bartram, J. (2012). Global access to safe water: accounting for water quality and the resulting impact on MDG progress. *International Journal of Environmental Research and Public Health*, 9(3): 880-894.
- Onuoha, S.C. (2017). The prevalence of Antibiotic Resistant Diarrhogenic Bacterial species in surface waters, South Eastern Nigeria. *Ethiopian Journal of Health Science* 27(4): 3019-3030
- Shimofuruya, H., Koide, A., Shirota, K., Tsuji, T., Nakamura, M., and Suzuki, J. (1996). The production of flocculating substance(s) by *Streptomyces griseus*. *Bioscience, Biotechnology, and Biochemistry*, 60(3):498-500.
- Ugbenyen, A., Cosa, S., Mabinya, L., Babalola, O. O., Aghdasi, F., and Okoh, A. (2012). Thermostable bacterial bioflocculant produced by *Cobetia* spp. isolated from Algoa Bay (South Africa). *International Journal of Environmental Research and Public Health*, 9(6): 2108-2120.
- Vasantharaj, S., Sathiyavimal, S. and Hemashenpagam, N. (2013). Treatment of municipal waste water with special reference to activated carbon combined with sand. *Archives of Applied Science Research* 5 (3):90-92.
- Yuliasri, I. R., Rohaeti, E., Effendi, H., and Darusman, L. K. (2016). The use of *Moringa oleifera* seed powder as coagulant to improve the quality of Wastewater and Ground Water. In *IOP Conference Series: Earth and Environmental Science* 31(1):012033.

- Zaki, S., Farag, S., Elreesh, G. A., Elkady, M., Nosier, M., and El Abd, D. (2011). Characterization of biofloculants produced by bacteria isolated from crude petroleum oil. *International Journal of Environmental Science and Technology*, 8(4): 831-840.
- Zouboulis, A. I., Chai, X. L., and Katsoyiannis, I. A. (2004). The application of biofloculant for the removal of humic acids from stabilized landfill leachates. *Journal of Environmental Management*, 70(1): 35-41.